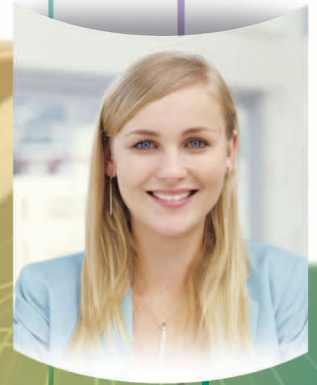


Canon



CORPORATE SOLUTIONS



imageRUNNER®
3045

meap
POWERED BY 

PERSONALIZED CAPABILITIES TO REDEFINE YOUR WORKFLOW

Canon imageRUNNER systems are known for their innovation and versatility. Now Canon takes this concept one step further with the imageRUNNER 3045 device—offering a new element of personalization to truly meet the individual workflow needs of every user in your office.

With digital copying and Mail Box features, optional Universal Send and network printing, a choice of finishing options, as well as new system features that allow you to customize the device and streamline your workflow, the imageRUNNER 3045 device is built for the department, but designed for the individual.

MAIN UNIT

Type:	Monochrome Digital Multifunction Imaging System
Imaging System:	Laser Dry Electrostatic Transfer
Developing System:	Dry Monocomponent Toner Projection
Fixing System:	RAPID Fusing System™
Acceptable Originals:	Sheets, Books, and 3-Dimensional Objects (up to 4.4 lb.)
Max. Original Copy Size:	11" x 17"
Min. Copy Size:	3-7/8" x 5-7/8" (Stack Bypass)
Memory	
Standard:	512MB RAM + 20GB HDD (Shared)
Optional:	256MB RAM (768MB RAM Maximum)
Max. Copy Reservation:	10 Jobs
Max. Mail Boxes Supported:	100
Actual Resolution:	600 x 600 dpi
Interpolated Resolution:	1200 x 600 dpi (Copy) 2400 x 600 dpi (Print)
Halftone:	256 Gradations of Gray (Continuous Tone)
Exposure Control:	Automatic or Manual (9 Levels)
Copy/Print Speed (Letter):	Up to 45 ppm
First-Copy Time:	Approx. 3.9 Seconds (From Platen Glass) Approx. 5.9 Seconds (From DADF)
Warm-Up Time:	Approx. 30 Seconds or Less From Main Power Off Approx. 10 Seconds or Less From Sleep Mode
Multiple Copies:	1 – 9,999
Document Feeding Method:	50-Sheet Duplexing Automatic Document Feeder (Standard)
Paper Source	
Standard:	Dual 550-Sheet Paper Cassettes 50-Sheet Stack Bypass
Optional:	Dual 550-Sheet Paper Cassettes 2,700-Sheet Paper Deck 4,950 Sheets
Maximum:	
Acceptable Paper Sizes	
Upper Cassette:	Legal, Letter, Letter-R, Statement-R, Executive
Lower Cassette:	11" x 17", Legal, Letter, Letter-R, Statement-R, Executive
Stack Bypass:	11" x 17", Legal, Letter, Letter-R, Statement-R, Executive, Free Size (3-7/8" x 5-7/8" to 11-5/8" x 17"), and Envelopes
Acceptable Paper Weight	
Cassettes:	17 lb. to 20 lb. Bond
Stack Bypass:	17 lb. to 32 lb. Bond
Duplexing:	Standard Automatic Trayless Duplexing

Magnification	
Standard Mode:	100%
Preset Reduction:	25%, 50%, 64%, 73%, 78%
Preset Enlargement:	121%, 129%, 200%, 400%
Zoom Mode	
Platen:	25% - 400% (in 1% Increments)
DADF:	25% - 200% (in 1% Increments)
Network Interface	
Connections:	10/100Base-TX (RJ-45), USB 2.0 High Speed
Dimensions (H x W x D):	34-3/4" x 22-1/4" x 27-5/8" (883mm x 565mm x 700mm)
Weight:	183 lb. (83kg)
Power Requirements:	120V AC, 60Hz, 10A
Power Consumption:	1.35kW (Max.)
Plug:	NEMA 5-15P
Toner (Estimated Yield):	24,000 Impressions at 6% Image Coverage

Duplexing Automatic Document Feeder

Acceptable Originals:	11" x 17", Legal, Letter, Letter-R, Statement-R
Acceptable Weights	
One-Sided Scanning:	11 lb. to 32 lb. Bond
Two-Sided Scanning:	13 lb. to 32 lb. Bond
Paper Capacity:	50 Sheets (20 lb. Bond)
Original Scanning Speed:	Up to 45 ipm (LTR)
Dimensions (H x W x D):	8-7/8" x 22-1/4" x 21-1/4" (122mm x 565mm x 538mm)
Weight:	Approx. 18.7 lb. (8.5kg)
Power Consumption:	Approx. 30W

OPTIONAL ACCESSORIES

Cassette Feeding Unit-Y3

Acceptable Paper Sizes:	11" x 17", Legal, Letter, Letter-R, Statement-R, Executive
Paper Capacity:	Dual 550-Sheet Cassettes (1,100 Sheets at 20 lb. Bond) (80g/m ²)
Acceptable Paper Weight:	17 lb. to 20 lb. Bond
Dimensions (H x W x D):	9-7/8" x 22-1/4" x 27-5/8" (252mm x 565mm x 700mm)
Power Consumption:	Approx. 20W
Weight:	Approx. 50.7 lb. (23kg)
Paper Deck-Q1	
Acceptable Paper Size:	Letter
Paper Capacity:	2,700 Sheets (20 lb. Bond) (80g/m ²)
Acceptable Paper Weight:	17 lb. to 20 lb. Bond
Dimensions (H x W x D):	18-5/8" x 14-5/8" x 23-1/4" (473mm x 372mm x 591mm)
Installation Space (W x D):	36-7/8" x 27-5/8" (937mm x 700mm)
Weight:	Approx. 65.3 lb. (29.6kg)

Envelope Feeder Attachment-C2

Acceptable Envelopes:	COM10, Monarch, DL, ISO-B5, ISO-C5, Yougata4
Copy Speed:	Up to 12 cpm
Capacity:	50 Sheets or 30mm in Height
Dimensions (H x W x D):	3-3/4" x 22-1/4" x 20-1/2" (95mm x 565mm x 521mm)
Weight:	Approx. 6.6 lb. (3kg)

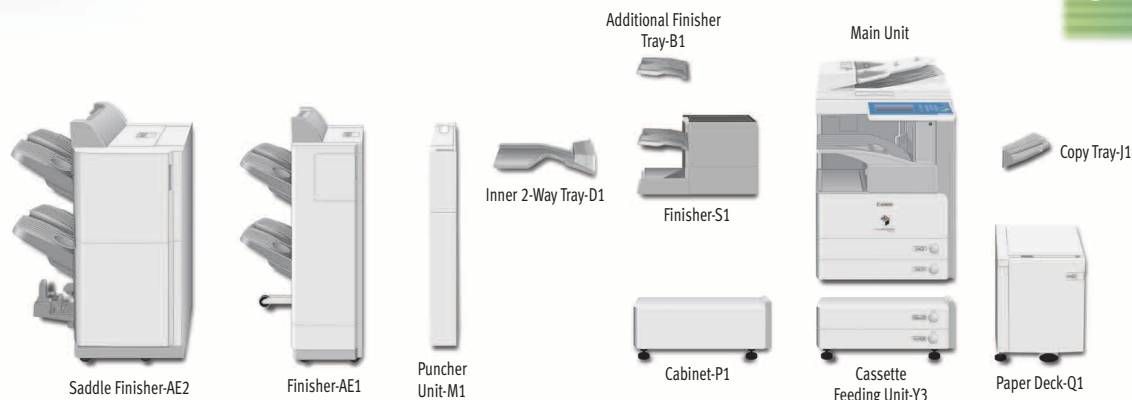
Inner 2-Way Tray-D1

Number of Trays:	Two
Acceptable Paper Sizes:	11" x 17", Legal, Letter, Letter-R, Statement-R, Executive, Envelope, Freesize (3-7/8" x 5-7/8" to 11-3/4" x 17")
Acceptable Paper Weight:	17 lb. to 32 lb. Bond
Paper Capacity Per Tray	
Upper Tray:	100 Sheets (LTR), 50 Sheets (Other Sizes)
Lower Tray:	250 Sheets (LTR), 100 Sheets (Other Sizes)
Dimensions (H x W x D):	6" x 7" x 21-1/2" (151mm x 176mm x 546mm)
Installation Space (W x D):	34" x 27-5/8" (862mm x 700mm) (When Stack Bypass is Extended)
Power Consumption:	Approx. 16W
Attachable Accessories:	Copy Tray-J1

Finisher-S1

Number of Trays:	One (Second Tray Optional)
Acceptable Paper Sizes:	11" x 17", Legal, Letter, Letter-R, Statement-R, Executive, Envelope, Freesize (3-7/8" x 5-7/8" to 11-3/4" x 17")
Acceptable Paper Weight:	17 lb. to 32 lb. Bond
Paper Capacity Per Tray	
Non-collate, Collate, Group Mode:	1,000 Sheets (Letter, Statement-R) 500 Sheets (11" x 17", Legal, Letter-R)
Staple Mode:	1,000 Sheets/30 Sets (Letter) 500 Sheets/30 Sets (11" x 17", Legal, Letter-R)
Paper Capacity Per Tray (with Additional Finisher Tray-B1)	
Non-collate, Collate, Group Mode:	300 Sheets Per Tray (Letter, Statement-R) 150 Sheets Per Tray (11" x 17", Legal, Letter-R)
Staple Mode:	300 Sheets/30 Sets Per Tray (Letter) 150 Sheets/30 Sets Per Tray (11" x 17", Legal, Letter-R)
Staple Position	
Top Left Corner:	11" x 17" (Landscape), Legal (Landscape), Letter, Letter-R
Top Right Corner:	11" x 17" (Portrait), Legal (Portrait)

SPECIFICATIONS



Max. Stapling Capacity:	50 Sheets (Letter) 30 Sheets (11" x 17", Legal, Letter-R)
Dimensions (H x W x D):	12-3/8" x 23-1/2" x 21-3/4" (315mm x 598mm x 552mm)
Installation Space (W x D):	41-1/8" x 27-5/8" (1044mm x 700mm)
Power Consumption:	Approx. 45W (When Additional Finisher Tray-B1 is Attached)
Attachable Accessories:	Additional Finisher Tray-B1 Puncher Unit-R1 Copy Tray-J1

Additional Finisher Tray-B1

Tray Capacity:	See Finisher-S1 Specifications
Dimensions (H x W x D):	3-1/8" x 7-7/8" x 15-5/8" (80mm x 200mm x 395mm)
Weight:	Approx. 3.7 lb. (1.7kg)

Puncher Unit-R1 (Option for Finisher-S1)

Acceptable Paper Sizes:	11" x 17", Legal, Letter, Letter-R
Acceptable Paper Weight:	17 lb. to 32 lb. Bond
Punch Type	
Two Holes:	Legal, Letter-R
Three Holes:	11" x 17", Letter

Punch Waste Capacity	
Two Holes:	Approx. 2,500 Sheets
Three Holes:	Approx. 1,500 Sheets

Dimensions (H x W x D):	6-7/8" x 19-7/8" x 5-1/8" (175mm x 505mm x 130mm)
Weight:	Approx. 8.6 lb. (3.9kg)

Finisher-AE1/Saddle Finisher-AE2

Number of Trays:	2 Trays
Acceptable Paper Sizes:	11" x 17", Legal, Letter, Letter-R, Statement, Statement-R, Executive, Envelope, Freesize (3-7/8" x 5-7/8" to 11-3/4" x 17")
Acceptable Paper Weight:	17 lb. to 32 lb. Bond
Paper Capacity Per Tray	
Non-collate, Collate, Group Mode:	1,000 Sheets (Letter, Statement-R, Executive) 500 Sheets (11" x 17", Legal, Letter-R)
Staple Mode:	1,000 Sheets/30 Sets (Letter, Executive) 500 Sheets/30 Sets (11" x 17", Legal, Letter-R)
Staple Positions:	Corner Staple, Double-Staple
Max. Stapling Capacity:	50 Sheets (Letter, Executive) 30 Sheets (11" x 17", Legal, Letter-R)

Saddle-Stitching*

Acceptable Paper Sizes:	11" x 17", Legal, Letter-R
Saddle-Stitch Capacity:	15 Sheets (60 Page Booklets)
Tray Capacity:	25 Sets (1 to 5 Sheets) 15 Sets (6 to 10 Sheets) 10 Sets (11 to 15 Sheets)
Folding:	V-Folding

Dimensions (H x W x D)	
Finisher-AE1:	40-7/8" x 25-3/8" x 25-7/8" (1037mm x 643mm x 657mm)
Saddle Finisher-AE2:	40-7/8" x 29-3/8" x 25-7/8" (1037mm x 747mm x 657mm)
Installation Space (W x D) :	
Finisher-AE1:	59-3/8" x 27-5/8" (1058mm x 700mm) (When Stack Bypass and Auxiliary Tray are Extended)
Saddle Finisher-AE2:	63-1/4" x 27-5/8" (1607mm x 700mm) (When Stack Bypass and Auxiliary Tray are Extended)

Weight:	
Finisher-AE1:	Approx. 95.2 lb. (43.2kg)
Saddle Finisher-AE2:	Approx. 161 lb. (73.2kg)

Attachable Accessories:

Puncher Unit-M1

Puncher Unit-M1 (Option for Finisher-AE1/Saddle Finisher-AE2)

Acceptable Paper Sizes:	11" x 17", Legal, Letter, Letter-R
Acceptable Paper Weight:	17 lb. to 32 lb. Bond

Punch Type	
Two Holes:	Legal, Letter-R
Three Holes:	11" x 17", Letter
Punch Waste Capacity:	Approx. 3,000 Sheets
Dimensions (H x W x D):	37-1/8" x 4-1/4" x 24-1/4" (941mm x 107mm x 615mm)
Weight:	Approx. 15.9 lb. (7.2kg)

UFR II/PCL Printer Kit-S1

CPU:	Canon Custom Processor
Memory:	512MB (Standard) 768MB (Maximum) (Shared)
Hard Disk Drive:	20GB (Shared)
Interface Connections:	10/100Base-TX (RJ-45), USB 2.0 High Speed
Supported PDL:	UFR II, PCL 5e, PCL 6
Maximum Print Resolution:	2,400 x 600 dpi (Interpolated)
Printer Drivers	
UFR II:	Windows® 2000/XP; Windows Server 2000, Citrix MetaFrame, Macintosh® OS X (OS 10.1.5 or Later)
PCL 5e/6:	Windows 98/Me/2000/XP Windows NT 4.0/Server 2003 Citrix MetaFrame
Internal Fonts:	80 Scalable Fonts, 30 Barcode, 10 Bitmap, 2 OCR Fonts
Interface Connections:	10/100 Base-TX (RJ-45), USB 2.0 High Speed
Network Operating Systems:	Novell® NetWare® v.3.2, 4.1, 4.11, 4.2, 5, 5.1, 6.5 (IPX/SPX) Windows 98, Me, 2000, XP, Server 2003 (TCP/IP) Apple® Macintosh OS 8.0 or Higher (DDP) Solaris™ 1.5x, 2.5x, or Later (TCP/IP)
Accessory:	PS Printer Kit-S1

PS Printer Kit-S1 (Option for UFR II/PCL Printer Kit-S1)

Memory:	512MB (Standard) 768MB (Maximum) (Shared)
Hard Disk Drive:	20GB (Standard) (Shared)
Interface Connections:	10/100Base-TX (RJ-45), USB 2.0 High Speed
Supported PDL:	PostScript 3 Emulation
Maximum Print Resolution:	2400 x 600 dpi (Interpolated)
Printer Drivers:	Windows 98/Me/2000/XP Windows NT 4.0/Server 2003 Citrix MetaFrame Macintosh OS X (OS 10.2 or Later)
Internal Fonts:	136 Scalable Fonts
Network Operating Systems:	Windows 98, Me, 2000, XP, Server 2003 Apple Macintosh OS X (10.2.8 or Later)

Universal Send Kit-G1

Address Book Capacity:	Max. 1,800 Destinations Max. 5 LDAP Servers
Sending Methods:	E-mail, I-Fax, File Server (FTP, SMB, IPX, WebDAV), User Inbox, Super G3 (Optional)
Communication Protocol File:	FTP (TCP/IP), SMB (TCP/IP), NCP (IPX), WebDAV
E-Mail/I-Fax:	SMT, POP3, I-Fax (Simple, Full)
Data Format	
File/E-Mail:	TIFF, PDF, PDF (OCR),** Encrypted PDF,*** Digital Device Signature PDF,*** Digital User Signature PDF,*** TIFF (MH, MR, MMR)
I-Fax:	

Super G3 Fax Board-Q1/Super G3 Multi-Line Fax Board-D1

Applicable Line:	Public Switched Telephone Network (PSTN)
Connection Lines:	One-Line (Super G3 Fax Board-Q1) Two-Lines (Super G3 Multi-Line Fax Board-D1)
Sending/Original Size:	Statement to 11" x 17"
Receiving/Printing Size:	Statement to 11" x 17"
Transmission Times	
ECM-MMR:	Approx. 3.2 Seconds/Page
G3MR/G3MH:	Approx. 13 Seconds/Page
JBIG:	Approx. 2.6 Seconds/Page
Auto Dial Function:	Address Book 1,800 Destinations (Including Destinations Stored in One-Touch Buttons)

Specifications are continued on back cover.

OTHER OPTIONAL ACCESSORIES

- Cabinet-P1
- FL Cassette-Y1 (Replacement)
- FL Cassette-Z1 (Replacement)
- Envelope Feeder Attachment-C2
- Copy Tray-J1
- Document Tray-J1
- Card Reader-C1
- Card Reader Kit-B1
- Braille Label Kit-A1
- ADF Access Handle-A1
- Workflow Composer-A1
- Encrypted Secure Print Software-C1^{▲▲}
- Barcode Printing Kit-A1^{▲▲}
- Web Access Software-F1[†]
- Digital User Signature PDF Kit-A1^{†††}
- Universal Send PDF Security Feature Set-A1^{†††}
- Universal Send Searchable PDF Kit-A1^{†††}
- imageRUNNER 256MB Expansion RAM-B1
- Secure Watermark-A1
- HDD Data Encryption Kit-B4
- HDD Data Erase Kit-A1
- Expansion Bus-B1
- USB Application Interface Board-G1
- Remote Operator's Software Kit-A2
- Voice Operation Kit-A1^{††}
- eCopy Suite
- imageWARE™ Suite

* Available with Saddle Finisher-AE2 only.

** Requires Universal Send Searchable PDF Kit-A1.

*** Requires Universal Send PDF Security Feature Set-A1.

▲ Requires Digital User Signature PDF Kit-A1.

▲▲ Requires the UFR II/PCL Printer Kit-S1.

† Requires the imageRUNNER 256MB Expansion RAM to display Web Flash content. Requires the UFR II/PCL Printer Kit-S1 for printing functions. Add the PS Printer Kit-S1 if printing PDF files.

†† Requires imageRUNNER 256MB Expansion RAM-B1.

††† Requires Universal Send Kit-G1

Canon
image*ANYWARE*

1-800-OK-CANON
www.usa.canon.com

Canon U.S.A., Inc.
One Canon Plaza
Lake Success, NY 11042

As an ENERGY STAR® Partner, Canon U.S.A., Inc. has determined that this product meets the ENERGY STAR guidelines for energy efficiency. ENERGY STAR and the ENERGY STAR mark are registered U.S. marks. Windows is a registered trademark of Microsoft Corporation in the United States and/or other countries. PostScript is a registered trademark or trademark of Adobe Systems Incorporated in the United States and/or other countries. Apple and Macintosh are trademarks of Apple Computer, Inc. Novell and Netware are registered trademarks of Novell, Inc. in the United States and other countries. Solaris is a trademark or registered trademark of Sun Microsystems, Inc. in the United States and other countries. CANON and IMAGERUNNER are registered trademarks of Canon Inc. in the United States and may also be registered trademarks or trademarks in other countries. RAPID FUSING SYSTEM is a trademark of Canon Inc. in the United States and may also be a registered trademark or trademark in other countries. IMAGEWARE is a registered trademark of Canon U.S.A., Inc. in the United States and is a trademark of Canon Inc. in certain other countries. IMAGEANYWARE is a trademark of Canon. All referenced product names and other marks are trademarks of their respective owners.

Specifications and availability are subject to change without notice. Some products shown with optional accessories and equipment. Actual product configurations may differ. ©2007 Canon U.S.A., Inc. All rights reserved.

0707R-3045-PDF-NW

