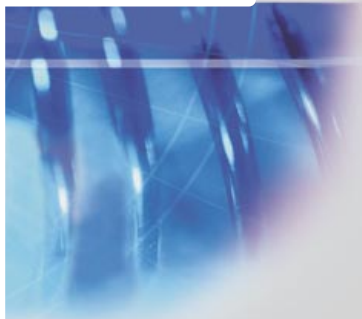
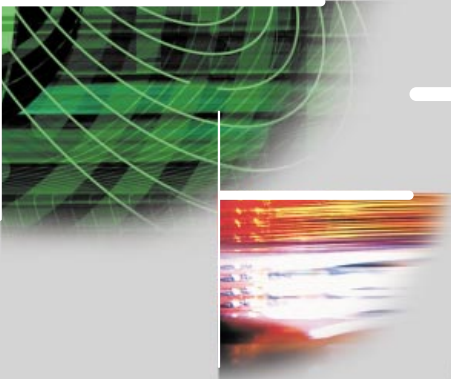


imageRUNNER™
6000



imageRUNNER™
6000



THE DEPARTMENTAL NETWORKED OFFICE SYSTEM OFFERING SUPERIOR DOCUMENT WORKFLOW PERFORMANCE.

In today's business environment, time is of the essence. To maintain the highest levels of productivity, organizations must do more with less, while streamlining information workflow. Introducing the imageRUNNER™ 6000 Networked Office System. Designed to leverage the power of customer networks to streamline information management.

Building on the benchmark reputation of previous Canon imageRUNNER product offerings, the imageRUNNER 6000 delivers a fast 60-page-per-minute print, copy, and scan speed, while at the same time delivering the highest image quality, network integration, and finishing capabilities of any product in its class. Designed specifically for the needs of large workgroups and corporate departments, the imageRUNNER 6000 is ideally suited for the replacement of existing analog copier technology, and for the delivery of robust printing and scanning capabilities not typically accessible in today's office environment. So when looking to drive greater levels of productivity and information management, look no further than the imageRUNNER 6000 to handle the job.



Whether you're copying, printing, or scanning, the imageRUNNER 6000 simplifies job operation and comes equipped with all the tools necessary to do your best.

A Treasure Chest of Functionality

The imageRUNNER 6000 builds upon Canon's digital product platform, offering both traditional and new capabilities to corporate workgroups and departments. With the ability to support network printing, copying, and both local and network scanning, the imageRUNNER 6000 gives users access to information-management capabilities, regardless of whether that information is in digital form or on paper. The power of Canon's capabilities lies in our seamless integration to customer networks and the ability for users to easily leverage system capabilities directly from their desktops.

Extensive Configuration Flexibility

The imageRUNNER 6000 offers considerable configuration flexibility, enabling customers to build systems ideally suited to individual department needs. To simplify customer choices, the imageRUNNER 6000 ships as a stand-alone copier, supporting basic copy functions and the scanning of hard-copy originals into its internal Image Server Mail Box. It is also fully upgradable to support network printing and network scanning. The imageRUNNER 6000 offers an extensive array of paper-handling and finishing options, ensuring customers have the tools necessary to handle the job.



The Need for Speed

Today's business environment requires that short deadlines be met—the imageRUNNER 6000 is up to the task. With a 100-sheet, high-capacity document feeder and automatic trayless duplexing, the imageRUNNER 6000 accelerates copy, print, or scan job completion, driving significant document throughput.

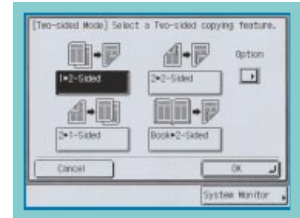
Image Quality an Artist Can Appreciate

Expanding on Canon's world-class leadership in image quality, the imageRUNNER 6000 captures the highest level of detail in every document. Whether copying, printing, or scanning, the imageRUNNER 6000 captures images at 600 x 600 dpi resolution, and is able to deliver output at an astounding 2400 x 600 dpi resolution. When combined with its ability to support up to 256 shades of gray, users will find themselves asking, "Is this a copy, or the original?"

Why Stop When You Can Run the Distance

No more stopping in the middle of jobs to reload paper. With a standard 4,150-sheet paper capacity, the imageRUNNER 6000 can handle the demands of most busy departments. That's not enough paper? Well, for paper-intensive environments, add the optional 3,500-sheet Paper Deck, for a total capacity of 7,650 sheets.

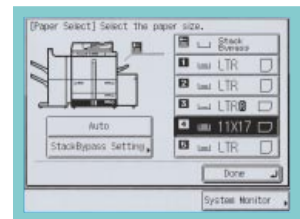
Have specialized paper requirements? Not a problem. With the ability to handle sizes from Statement to 11" x 17", and weights up to 110 lb. Index, the imageRUNNER 6000 is capable of handling even the most specialized copying and printing requirements.



Duplexing Screen

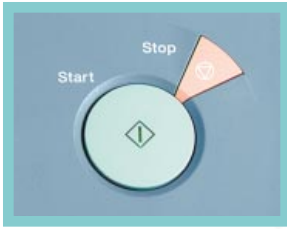


Driver Page Setup Tab



Paper Selection Screen

digital
multifunctional



applications connectivity

Raise Output to a New Standard

Setting New Expectations for Office Output

Common office output is just that—common. With the imageRUNNER 6000, Canon provides unique application functionality which allows customers to enhance document output and information management. These unparalleled application capabilities are delivered via an internal 5.1GB Image Server and 128MB of RAM, which ship standard with every unit. Examples of this functionality include the following:

Confidential Mail Boxes: Supports the creation of up to 100 individual user mail boxes. Mail boxes can be used to accept scanned and printed data, permitting users to easily combine paper and electronic information.

Scan-Once-Print-Many and Automatic Page Orientation: Minimizes scanner wear and tear while rotating scanned pages to match cassette paper orientation.

Automatic Page Imposition: Automatically imposes pages in correct order for the creation of saddle-stitched booklets.

Copy Reservation: Allows users to store up to five copy jobs in memory while current copy or print jobs are being processed.

Job Build: Permits the building of jobs from disparate originals, easily integrating documents scanned through the document feeder with those directly placed on the glass.

Chapterization: Supports the creation of chapters when copying books and other materials requiring these types of separations.

In-line Finishing: Regardless of whether printing or copying, the imageRUNNER 6000 offers extensive finishing capabilities, including multiposition stapling, two- and three-hole punching, and saddle-stitched booklet-making on demand.

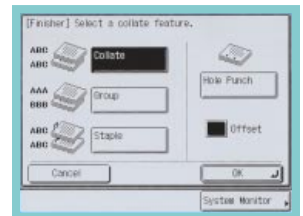
We Finish What We Start

While most office copiers and printers are content to deliver simple stapling, Canon's imageRUNNER 6000 raises expectations by offering the most extensive level of document-finishing in its class. The imageRUNNER 6000 offers a choice of two Finishers, both designed to enhance productivity and facilitate the delivery of the most professional-looking documents.

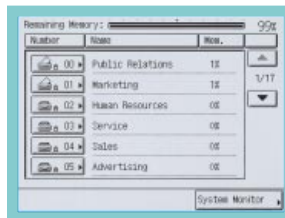
The imageRUNNER 6000 Stapler Stacker offers two trays to handle Statement-to-Ledger output. With a total output capacity of 2,000 sheets, the Stapler Stacker can handle even the longest print or copy runs. The imageRUNNER 6000 has the ability to staple in any corner of the page, or place multiple staples in either margin, finishing the job in style. Need to create booklets? With the imageRUNNER 6000, the creation of booklets from hard-copy or electronic originals has never been easier. The imageRUNNER 6000 Saddle Finisher offers three trays, two dedicated for stapled output, and the third dedicated to saddle-stitched booklets.

Offering a total output capacity of 2,300 sheets (2,000 in top trays, 300 in the saddle-stitch tray), the Saddle Finisher offers the same capabilities as the Stapler Stacker.

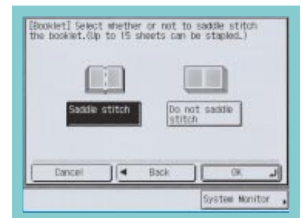
For even greater levels of finishing, Canon offers an optional hole-punching unit for both imageRUNNER 6000 Finishers. With the ability to deliver both two- and three-hole-punched output, the imageRUNNER 6000 is one of the few systems capable of punching Letter, Legal, and 11" x 17" paper sizes.



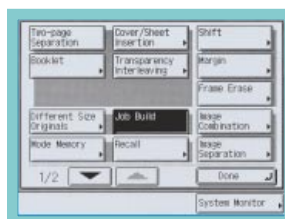
Finishing Screen



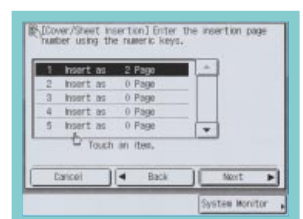
User Mail Box Screen



Booklet/Saddle-stitch Screen



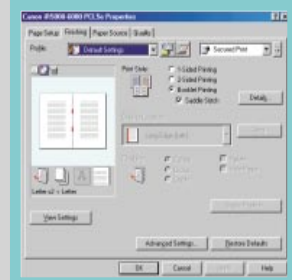
Job Build Screen



Chapterization Screen

functionality network

Network Printing and Connectivity Should Not Be an Afterthought



Driver Finishing Job

Why Stand-alone When You Can Connect

At Canon, network connectivity and printing are never an afterthought. That's why since we invented digital multifunction in 1994, we are the only vendor to deliver network connectivity and printing at the time of initial product launch. So while other vendors are making promises about their networked capabilities, Canon is delivering them.

The imageRUNNER 6000 carries on Canon's networking tradition by offering network connectivity and printing capabilities at the time of initial product delivery.

The Ideal Departmental Solution

The imageRUNNER 6000 is ideally suited to handle the printing requirements of large workgroups and small departments. With a print controller capable of handling 10/100 Ethernet or Token Ring connections and PostScript® 3 Emulation and PCL® 5e and PCL® 6 print languages, the imageRUNNER 6000 network print function is clearly up to the task.

Canon's latest print controller design leverages the unit's internal Image Server and memory structure, ensuring rapid first-page-out times, and quick and efficient printing of typical office documents. Through Canon's print controller design, customers are assured output delivery at rated print engine speed for optimal productivity and editing capabilities that digital technology offers as a direct replacement for analog devices. And with a completely modular upgrade path, the imageRUNNER 6000 can seamlessly change to address the document-management needs of your organization, if and when they dictate.

A New Level of Printing Functionality

In addition to the basic network printing capabilities of the imageRUNNER 6000, Canon has equipped this system with extensive printing capabilities not found on traditional network laser printers. Some of these enhanced capabilities include the following:

Confidential Printing

Permits entry of a seven-digit confidential PIN from within the imageRUNNER 6000 print driver. Documents are delivered to the device and printed upon user entry of their confidential PIN number at the device.

Mail Box Printing

Users can print to personal mail boxes for integration with other documents previously printed or scanned to their mail box, thereby creating new compound documents.



*Check with your local Canon Dealer for availability.

printing scanning



A Driver that Actually Doesn't Need Directions

Why does Canon provide more network-printing-capable systems than our competition? The answer is simple. We've made network printing easy. The imageRUNNER 6000's clear advantage lies in the intuitive print driver software, shipped with all network-print-configured units.

Canon's print driver software gives users immediate access to all imageRUNNER 6000 output functions—directly from their desktop—in a graphical, easy-to-use format. Canon's driver software dynamically displays an image of the in-use imageRUNNER 6000, indicating installed hardware options, paper size, and paper levels. As these attributes change, the driver is updated automatically, informing users of the latest device capabilities.

To further simplify use, Canon offers the ability to view page layout from within the driver prior to printing. Using this driver capability, users are assured their output will print as expected.

Other significant driver capabilities include the ability to save frequently used print configurations, annotate documents with information including name, date, etc., add watermarks, and retain extensive settings related to document finishing, particularly booklet-making.

Through this design, Canon has created interface technology that is not intimidating for the novice user, while at the same time is robust enough to handle the demands of the power user.

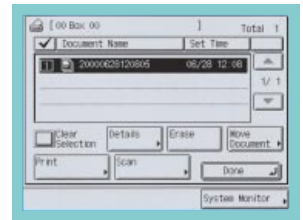
And we haven't forgotten the network administrator! Canon offers multiple installation methods for the imageRUNNER 6000 print driver, and ships the only driver

software available in the market capable of discovering devices on the network. This allows administrators to select imageRUNNER 6000 target devices, and automatically configure their equipped options with just a click of the mouse.

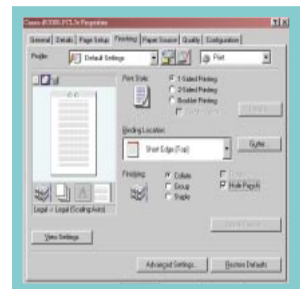
Bridging the Paper and Digital Worlds

It is estimated that the majority of corporate information still resides on paper. However, most *new* information is created electronically. Through its scanning capabilities, the imageRUNNER 6000 permits easy integration of both hard-copy and electronic information, thus streamlining information availability and management. Using the imageRUNNER 6000, users can scan locally to the imageRUNNER 6000 internal Mail Box, or over the network (network print option is required) using Canon's TWAIN driver. Through these scanning capabilities, the imageRUNNER 6000 permits easy conversion of paper-based originals, such as photos and forms, for local storage within individual imageRUNNER 6000 user mail boxes. At the same time, customers can leverage any TWAIN-compliant software application to drive the imageRUNNER 6000 for specific network scanning and workflow requirements.

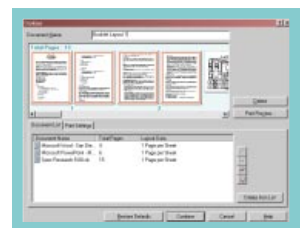
When equipped with optional eCopy™ ShareScan™ and Desktop software, the imageRUNNER 6000 permits walk-up users to scan and preview documents prior to distribution. Documents can be scanned in a variety of file formats and can be sent to multiple destinations—including E-mail addresses, a user's desktop, or a file repository. eCopy Desktop software adds a powerful image manipulation tool for adding annotations, mark-ups, or converting scanned documents to editable text.



Scan to Mail Box Screen



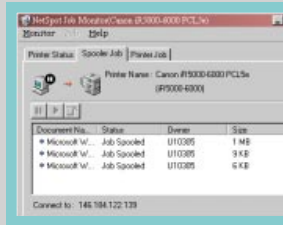
Driver Properties Finishing Tab



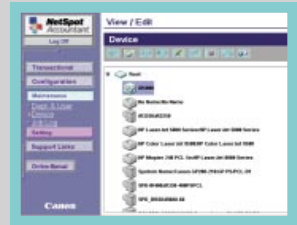
Canon Page Composer Screen



NetSpot Console Device List Selection



NetSpot Job Monitor–Spooler Job Tab



NetSpot Accountant–Device List Display

An All-star Player Sporting all the Tools

The imageRUNNER 6000, like all Canon networked systems, comes equipped with a comprehensive set of system utilities designed to simplify operation and management for both end-users and network administrators. Through these tools, Canon eases device installation and network management while supplying a level of device-status and job-management capabilities unmatched in the industry.

Do More than Just Connect to the Network

Basic network connectivity is just that—basic. To truly support customer requirements, networked devices must be easy to install, seamlessly integrate with existing network-management applications, and permit management from anywhere in the enterprise. Canon’s comprehensive solution to these customer requirements is embodied within Canon’s suite of software utilities as outlined below.

Remote UI™: Canon’s Remote UI utility transforms a user’s desktop into a remote access center for the imageRUNNER 6000. By entering the IP address of the device from a standard web browser, users gain instant access to device status and settings, job-management functions, user mail boxes and more—with no additional hardware or software required.

NetSpot Console: NetSpot Console is a web-based installation and management utility capable of installing and managing Canon networked systems, including the imageRUNNER 6000, on most customer networks. Through NetSpot Console network administrators are provided a convenient, platform-independent utility to install and manage Canon devices from anywhere within the enterprise. In addition to basic installation support, NetSpot Console also

delivers administrator alerts, notifying administrators of device status conditions such as low toner, paper jams, and others. For added convenience, NetSpot Console is also capable of managing third-party printers complying with the standard Printer MIB, thereby consolidating network device management via one utility.

NetSpot Job Monitor: To track the progress and manage print jobs, Canon supplies NetSpot Job Monitor. Using this utility, end-users can track the progress of jobs sent for printing. NetSpot Job Monitor runs as an automated task in the Windows® System Tray, and can be configured to report job conditions based on administrator or end-user preferences. Significant to NetSpot Job Monitor is its ability to deliver end-of-job notification to end-users, ensuring that they are always informed of the completion of submitted work.

NetSpot Accountant: NetSpot Accountant is an optional utility available for the imageRUNNER 6000 that is capable of providing comprehensive job tracking and analysis for cost accounting and workflow optimization. Using NetSpot Accountant, network administrators can track all activity at the imageRUNNER 6000, including copying, printing, and scanning, and billing internal or external clients for device utilization. A wide range of configuration settings are available for NetSpot Accountant, enabling administrators to track device usage in a myriad of ways. NetSpot Accountant is ideal for Legal customers, or any customer who desires to account for imageRUNNER 6000 device utilization.

Enterprise-management Integration: In addition to the NetSpot utilities mentioned, Canon also supplies plug-in modules for the most

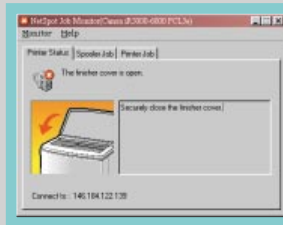
popular enterprise-management applications in use today. Included in this list of supported applications are Microsoft® Management Console, CA-Unicenter TNG®, HP OpenView®, Tivoli® NetView®, and BMC Patrol. Through these plug-ins, Canon permits easy management of imageRUNNER 6000 and other Canon networked devices from directly within the enterprise-management system console.

An Impressive Team

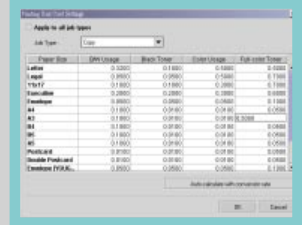
Canon’s pioneering efforts in creating the digital multifunction marketplace has provided us with a considerable advantage in identifying emerging customer needs. This experience, combined with our exhaustive funding of new research and development, has allowed us to assume a commanding position in today’s office and production environments.

Our goal is simple: to provide you with the best solutions to your document- and information-management needs.

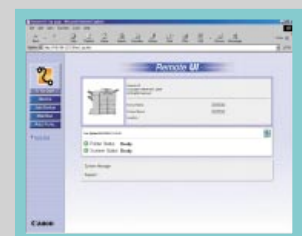
Whether it be the Canon imageRUNNER 6000, or other Canon imageRUNNER product offerings, users will agree that Canon’s functional and integrated network capabilities clearly enable them to achieve greater levels of productivity, efficiency, and a competitive advantage.



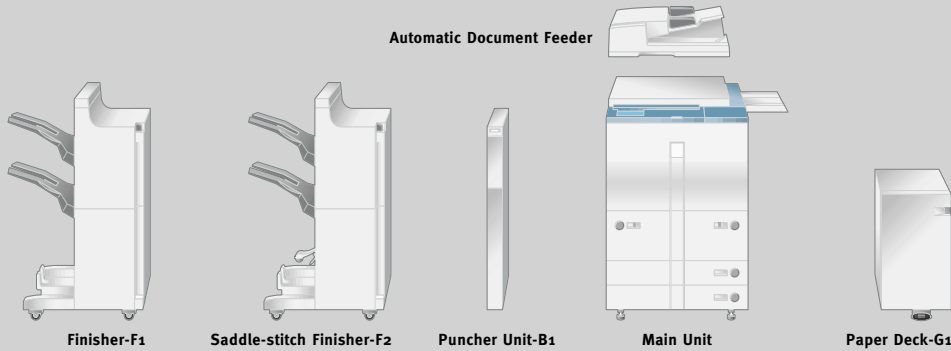
NetSpot Job Monitor–Status Notification Device



NetSpot Accountant–Auto Calculation Settings



Remote UI Job Status



imageRUNNER 6000 Specifications

Type:	Digital, Multifunction Imaging System
Imaging System:	Laser Dry Electrostatic Transfer
Developing System:	Dry Monocomponent Toner Projection
Image Server Memory:	Standard 128MB RAM + 5.1GB HDD (Max. Capacity: Approximately 4,000 Originals)
First-copy Time:	3.8 Seconds from Platen Glass 5.1 Seconds from ADF
Warm-up Time:	6 Minutes or Less
Acceptable Originals:	Sheets, Books, 3 Dimensional Items (Up to 4.4 lb.)
Max. Original Size:	11" x 17" (Ledger)
Max. Copy Size:	11" x 17" (Ledger)
Min. Copy Size:	4-1/8" x 5-7/8"
Max. Mail Boxes Supported:	100
Max. Copy Reservation:	5 Jobs
Copy/Scanning Resolution:	600 dpi x 600 dpi 600 dpi x 600 dpi 2400 dpi x 600 dpi Interpolated
Printing Resolution:	256 Gradations of Gray 60 cpm (Letter) 42 cpm (Letter-R) 36 cpm (Legal) 30 cpm (Ledger)
Half-tone:	256 Gradations of Gray
Copy Speed:	60 cpm (Letter) 42 cpm (Letter-R) 36 cpm (Legal) 30 cpm (Ledger)
Duplexing:	Standard Automatic Trayless Duplexing
Magnification Reduction/Enlargement:	25% to 400% in 1% Increments
Paper Supply Standard:	Dual Front-loading Trays (1,500 Sheets Each) Dual Front-loading Cassettes (550 Sheets Each) 50-sheet Stack Bypass 3,500-sheet Paper Deck (Total: 7,650 Sheets)
Optional:	3,500-sheet Paper Deck (Total: 7,650 Sheets)
Multiple Copies:	1 to 999
Paper Weights:	17 lb. to 24 lb. Bond (550-sheet Cassettes) 17 lb. to 110 lb. Index (Manual Bypass, 1,500-sheet Drawers and 3,500-sheet optional Paper Deck-G1)
Dimensions (H x W x D):	44-3/4" x 25-3/8" x 29-1/4" (1,136mm x 643mm x 743mm)
Weight:	462 lb. (210kg)
Supplies	
Drum:	Amorphous Silicon – Estimated Yield: 3,000,000 Impressions
Maximum Duty Cycle:	230,000 Impressions per Month
Toner:	Magnetic Negative Toner – Estimated Yield: 33,000 Images (at 6% coverage)

Accessories

Automatic Document Feeder (Standard)	
Acceptable Originals:	Statement to Ledger
Capacity:	100 Sheets (LTR/20 lb.)
Max. Paper Weight:	Up to 32 lb. Bond (LTR)
Finisher-F1 (Optional)	
Number of Trays:	2 Trays
Tray Capacity	
Top Tray:	1,000 Sheets (LTR) 500 Sheets (11" x 17") Offset Stacking: Max. 30 Sets (All Sizes)
Lower Tray:	1,000 Sheets (LTR) 500 Sheets (11" x 17") Offset Stacking: Max. 30 Sets (All Sizes)
Staple Position:	1 - Top Corner 2 - Side Margin
Max. Stapling Capacity:	50 Sheets (LTR/STMT) 30 Sheets (LTR-R/LGL/11" x 17")
Power Source:	Directly from Main Unit
Dimensions (H x W x D):	41-3/8" x 26-3/8" x 24-1/4" (1,052mm x 669mm x 614mm)
Weight:	70.5 lb. (32kg)
Saddle Finisher-F2 (Optional)	
Number of Trays:	2 Trays
Tray Capacity	
Top Tray:	1,000 Sheets (LTR) 500 Sheets (11" x 17") Offset Stacking: Max. 30 Sets (w/staple) (All Sizes)
Lower Tray:	1,000 Sheets (LTR) 500 Sheets (11" x 17") Offset Stacking: Max. 30 Sets (w/staple) (All Sizes)
Saddle-stitch Tray:	300 Sheets
Staple Position:	1 - Top Corner 2 - Side Margin
Max. Stapling Capacity:	50 Sheets (LTR/STMT) 30 Sheets (LTR-R/LGL/11" x 17")
Saddle-stitch Tray	
Stapling Capacity:	15 Sheets
Folding:	V-folding Standard
Power Source:	Directly from Main Unit
Dimensions (H x W x D):	41-3/8" x 26-3/8" x 24-1/4" (1,052mm x 669mm x 614mm)
Weight:	114 lb. (52kg)

Puncher Unit-B1 (Option for Finisher-F1 and Saddle Finisher-F2)

Max. Paper Weight:	Up to 110 lb. Index
Punch Types:	2-hole/3-hole (Auto Change) 3-hole (LTR/11" x 17") 2-hole (LGL/LTR-R)
Punch Dust Stock:	Approximately 3,000 Sheets
Power Source:	Directly from Main Unit
Dimensions (H x W x D):	34-7/8" x 3" x 24-1/4" (886mm x 75.5mm x 614mm)
Weight:	11.9 lb. (5.4kg)

Paper Deck-G1

Paper Capacity:	3,500 Sheets
Paper Size:	LTR
Paper Weights:	17 lb. Bond to 110 lb. Index
Power Source:	Directly from Main Unit
Dimensions (H x W x D):	20-1/2" x 12-3/4" x 33" (519mm x 323mm x 583mm)
Weight:	90.3 lb. (41kg)

Network Multi-PDL Printer Kit-A2 (Optional)

Processor:	Canon Custom Processor—Shared
RAM:	192MB(Std./Max.)—Shared
Hard Disk:	5.1GB
PDL Support:	PCL [®] 5e, PCL [®] 6, PostScript [®] 3 Emulation
Internal Fonts:	136 PostScript Fonts 117 Adobe [®] Type Fonts 19 TrueType [®] Fonts 80 PCL Roman Fonts 32 PCL Bar-code Fonts RJ-45 (10/100Base-T)
Interface Connections:	IEEE 1284 (Compatibility: Nibble, Byte and ECP mode) Token Ring (Optional Card) IPX/SPX [™] : 802.2, 802.3, Ethernet II, 802.2 SNAP TCP/IP: SENS for Tomado from WindRiver AppleTalk [™] : 802.2 SNAP and AppleTalk Phase II only
Protocol Stacks:	Novell [®] NetWare [®] v.3.2, 4.1, 4.11, 4.2, 5 (IPX/SPX) Windows [®] 95, 98 (TCP/IP) Windows NT [®] 4.0 (TCP/IP) Windows [®] 2000 (TCP/IP) Solaris [™] 1.x, 2.5 or Later (TCP/IP) Apple System 7.5 or Higher (DDP)
Network OS:	

As an ENERGY STAR[®] Partner, Canon U.S.A., Inc. has determined that this product meets the ENERGY STAR[®] guidelines for energy efficiency. The ENERGY STAR name is a registered trademark of the U.S. Environmental Protection Agency. HP, OpenView, and PCL are registered trademarks of Hewlett-Packard Company. Adobe and PostScript are registered trademarks of Adobe Systems Incorporated. Microsoft, Windows, and Windows NT are registered trademarks of Microsoft Corporation in the United States and/or other countries. AppleTalk, Macintosh and TrueType are registered trademarks of Apple Computer, Inc. Novell and NetWare are registered trademarks, and IPX/SPX is a trademark of Novell, Inc. in the United States and other countries. Solaris is a trademark of Sun Microsystems, Inc. eCopy and ShareScan are trademarks of eCopy, Inc. Tivoli and NetView are registered trademarks of Tivoli Systems, Inc. in the United States, other countries, or both. Patrol is a registered trademark of BMC Software, Inc. Unicenter TNG is a registered trademark of Computer Associates International. Canon and NetSpot are registered trademarks, and IMAGERUNNER, Canon Know How, and the GENUINE logo are trademarks of Canon Inc. IMAGEANYWARE is a service mark of Canon U.S.A., Inc. All other terms and product names may be trademarks or registered trademarks of their respective owners, and are hereby acknowledged.

Specifications subject to change without notice.

0021W108

0801-IR6000-100M



PRINTED ON RECYCLED PAPER IN THE U.S.A.



Canon KNOW HOW™

1-800-OK-CANON
www.usa.canon.com

Canon U.S.A., Inc.
One Canon Plaza
Lake Success, NY 11042