

**Canon**

imageRUNNER™  
5000

# The Definitive Network Printing Solution



# The Departmental Networked Office System Offering Superior Document Workflow Performance.

**Introducing the imageRUNNER™ 5000 Networked Office System. Designed to leverage the power of customer networks to streamline information management.**

In today's business environment, time is of the essence. To maintain the highest levels of productivity, organizations must do more with less, while streamlining information workflow.

Building on the benchmark reputation of previous Canon imageRUNNER product offerings, the imageRUNNER 5000 delivers a fast 50-page-per-minute print, copy, and scan speed, while at the same time delivering the highest image quality, network integration, and finishing capabilities of any

product in its class. Designed specifically for the needs of large workgroups and corporate departments, the imageRUNNER 5000 is ideally suited for the replacement of existing analog copier technology, and for the delivery of robust printing and scanning capabilities not typically accessible in today's office environment. So when you're looking to drive greater levels of productivity and information management, look no further than the imageRUNNER 5000 to handle the job.



Whether you're copying, printing, or scanning, the imageRUNNER 5000 simplifies job operation and comes equipped with all the tools necessary to be your best.

### A Treasure Chest of Functionality

The imageRUNNER 5000 builds upon Canon's digital product platform, offering traditional and new capabilities to corporate workgroups and departments. With the ability to support network printing, copying, and both local and network scanning, the imageRUNNER 5000 delivers users access to information-management

capabilities regardless of whether that information resides in digital form or on paper. The power of Canon's capabilities lay in our seamless integration to customer networks, and the ability for users to easily leverage system capabilities directly from their desktops.



## Extensive Configuration Flexibility

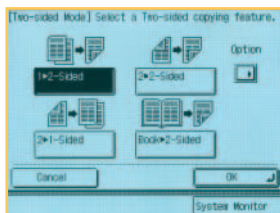
The imageRUNNER 5000 offers considerable configuration flexibility, enabling customers to build systems ideally suited to individual department needs. To simplify customer choices, the imageRUNNER 5000 ships as a stand-alone copier, supporting basic copy functions and the scanning of hard-copy originals into its internal Image Server Mail Box. It is also fully upgradable to support network printing and network scanning. The imageRUNNER 5000 offers an extensive array of paper-handling and finishing options, ensuring customers have the tools necessary to handle the job.

## The Need for Speed

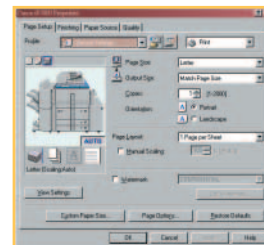
Today's business environment requires that short deadlines be met. The imageRUNNER 5000 is up to the task. Shipping standard with a 100-sheet high-capacity document feeder and automatic trayless duplexing, the imageRUNNER 5000 accelerates the completion of any copy, print, or scan job, resulting in significant document throughput.

## Image Quality an Artist Can Appreciate

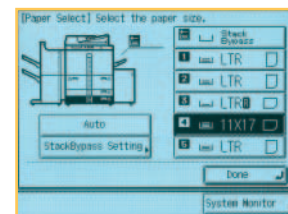
Expanding upon Canon's world-class leadership in image quality, the imageRUNNER 5000 captures the highest level of detail in every document. Whether you're copying, printing, or scanning, the imageRUNNER 5000 captures images at 600 x 600 dpi resolution, and is able to deliver print output at an astounding 2400 x 600 dpi resolution. When combined with its ability to support up to 256 shades of gray, you'll find yourself asking, "Is this a copy, or the original?"



Duplexing Screen



Driver Page Setup Tab



Paper Selection Screen

## Why Stop When You Can Run The Distance

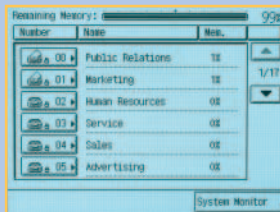
Tired of stopping in the middle of your job to reload paper? With the imageRUNNER 5000, you can forget about it. Shipping with a standard 4,150-sheet paper capacity, the imageRUNNER 5000 is pre-configured to handle most busy departments. That's not enough paper you say? Well, for paper-intensive environments, the imageRUNNER 5000 can also be equipped with an additional 3,500-sheet paper deck, bringing total capacity to 7,650 sheets.

Have specialized paper requirements? Not a problem for the imageRUNNER 5000. With the ability to handle sizes from statement to 11" x 17", and weights up to 110 lb. Index, the imageRUNNER 5000 is capable of handling even the most specialized copying and printing requirements.

# Raise Your Output to a New Standard

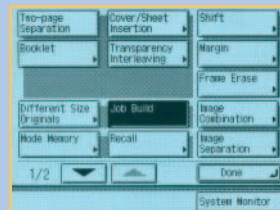
## Setting New Expectations for Office Output

Common office output is just that—common. With the imageRUNNER 5000, Canon has embedded a host of unique application functionality that allows customers to spice up their document output and information management. The vast majority of the imageRUNNER 5000's unique application capabilities are delivered via an internal 5.1GB Image Server and 192MB of RAM, which ship standard with every unit. Examples of this functionality include:



User Mail Box Screen

**Confidential Mail Boxes:** The imageRUNNER 5000 supports the creation of up to 100 individual user Mail Boxes. Mail Boxes can be used to accept scanned and printed data, permitting users to easily combine paper and electronic information.



Job Build Screen

**Scan-Once-Print-Many and Automatic Page Orientation:** Minimizes scanner wear and tear while rotating scanned pages to match cassette paper orientation.

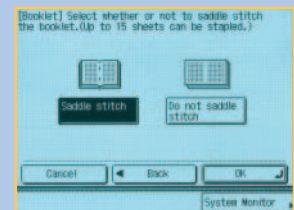
**Automatic Page Imposition:** Automatically imposes pages in correct order for the creation of saddle-stitched booklets.

**Copy Reservation:** Allows users to store up to five copy jobs in memory while current copy or print jobs are being processed.

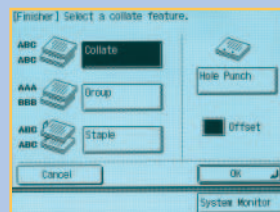
**Job Build:** Permits the building of jobs from disparate originals, easily integrating documents scanned through the document feeder with those placed directly on the glass.

**Chapterization:** Supports the creation of chapters when copying books and other materials requiring these types of separations.

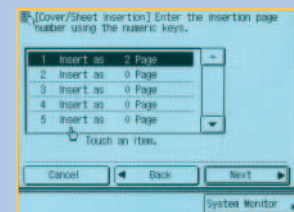
**In-line Finishing:** Regardless of whether printing or copying, the imageRUNNER 5000 offers extensive finishing capabilities, including multiposition stapling, two- and three-hole punching, and saddle-stitched booklet-making on demand.



Booklet/Saddle-stitch Screen



Finishing Screen



Chapterization Screen

## We Finish What We Start

While most office copiers and printers are content to deliver simple stapling, Canon's imageRUNNER 5000 raises expectations by offering the most extensive level of document-finishing in its class. The imageRUNNER 5000 offers a choice of two finishers, both designed to enhance productivity and facilitate the delivery of the most professional-looking documents.

The imageRUNNER 5000 Stapler Stacker offers two trays to handle statement- to ledger-sized output. With a total output capacity of 2,000 sheets, the Stapler Stacker can handle even the longest print or copy runs. With the ability to staple in any corner of the page, or place multiple staples in either margin, the imageRUNNER 5000 finishes the job in style.

Need to create booklets? With the imageRUNNER 5000, the creation of booklets from hard-copy or electronic originals has never been easier. The imageRUNNER 5000 Saddle Finisher offers three trays, two dedicated for stapled output, with the third dedicated to saddle-stitched booklets. Offering a total output capacity of 2,300 sheets (2,000 in top trays, 300 in saddle-stitch tray), the Saddle Finisher offers the same capabilities as the Stapler Stacker.

For even more finishing capabilities, Canon offers an optional hole-punching unit for both imageRUNNER 5000 Finishers. With the ability to deliver both two- and three-hole-punched output, the imageRUNNER 5000 is one of the few systems capable of punching letter, legal, and 11" x 17" paper sizes.



# Network Printing and Connectivity Should Not Be an Afterthought

## Why Stand Alone When You Can Connect?

When configured with one of two optional print controllers, the imageRUNNER 5000 becomes a powerful networked device, giving users full access to the imageRUNNER 5000's advanced capabilities right from their desktops. Users can choose either the Canon-designed Network Multi-PDL Printer Kit-A2 or the imagePASS-L1 Print Controller developed by Electronics for Imaging. Both enable 2400 x 600 dpi interpolated print resolution, and are designed to integrate seamlessly with your existing network infrastructure.

The Canon-customized controller leverages the standard 250MHz processor embedded into each imageRUNNER 5000 base model. This controller is best suited for text-intensive documents common to the general office environment, and where PCL page description language represents the bulk of jobs sent to the printer.

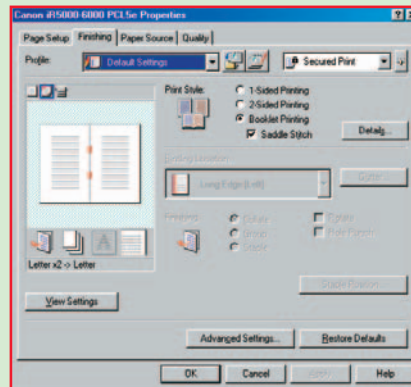
The imagePASS-L1 Print Controller features an Intel® Celeron® 366MHz Mobile processor, and is designed for environments in which complex graphics, variable data, or true Adobe® PostScript® files make up the majority of print jobs. An imageRUNNER 5000 equipped with an imagePASS-L1 Print Controller gives users full access to EFI™ print utilities such as WebTools,™ DocBuilder,™ Command WorkStation,™ and Fiery® FreeForm.™



## A New Level of Printing Functionality

In addition to the basic network printing capabilities offered by the imageRUNNER 5000, Canon has equipped this system with extensive printing capabilities not found on traditional network laser printers. Some of these enhanced capabilities include:

- **Confidential Printing:** Permits entry of a seven-digit confidential PIN from within the imageRUNNER 5000 print driver. Documents are delivered to the device and printed upon entry of the user's confidential PIN number at the device.
- **Job Accounting:** When equipped with optional NetSpot<sup>®</sup> Accountant\* software, the imageRUNNER 5000 print driver captures user-information for job tracking and billing purposes.
- **Mail Box Printing:** Users can print to personal Mail Boxes for integration with other documents previously printed or scanned to their mail box, thereby creating new compound documents.
- **In-line Finishing:** Directly from the imageRUNNER 5000 desktop print driver, users have immediate and easy access to all imageRUNNER 5000 finishing options, including basic stapling, two- and three-hole punching, and automatic booklet-making.



Driver Finishing Tab

## A Driver that Actually Doesn't Need Directions

Why does Canon provide more network-printing-capable systems than our competition? The answer is simple. We've made network printing easy. The imageRUNNER 5000's clear advantage lies in the intuitive print driver software shipped with all network-print-configured units.

Using Canon's print driver software, users have immediate access to virtually every imageRUNNER 5000 output function directly from their desktop in a graphical, easy-to-use format. Canon's driver software dynamically displays an image of the target imageRUNNER 5000, indicating installed hardware options, paper size, and paper levels. As these attributes change, the driver is

dynamically updated, automatically informing users of the latest device capabilities.

To further simplify use, Canon offers the ability to view page layout from within the driver prior to printing. Using this driver capability, users are assured their output will print as expected.

Other significant driver capabilities include the ability to save frequently used print configurations, to annotate documents with information including name, date, etc., the ability to add watermarks, and allow users to choose extensive settings related to document finishing, particularly booklet-making.

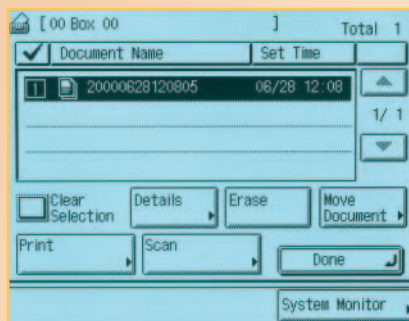
Through this design, Canon has created interface technology that is not intimidating for the novice user, while at the same time is robust enough to handle the demands of the power user.

And we haven't forgotten the network administrator! Canon offers multiple installation methods for the imageRUNNER 5000 print driver, and ships the only available driver software capable of discovering devices on the network. This allows administrators to select imageRUNNER 5000 target devices, and automatically configure their equipped options with just a click of the mouse.

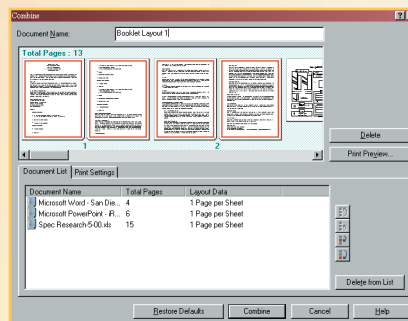
## Bridging the Paper and Digital Worlds

It is estimated that the majority of corporate information still resides on paper. However, most new information is created electronically. The imageRUNNER 5000, through its scanning capabilities, permits easy integration of both hard-copy and electronic information, thus streamlining information availability and management. Using the imageRUNNER 5000, users can scan locally to the imageRUNNER 5000 internal Mail Box or over the network (network print option is required) using Canon's virtual TWAIN driver.\* Through these scanning capabilities, the imageRUNNER 5000 permits easy conversion of paper-based originals, such as photos and forms, for local storage within individual imageRUNNER 5000 user Mail Boxes. At the same time, customers can leverage any TWAIN-compliant software application to drive the imageRUNNER 5000 for specific network scanning and workflow requirements.

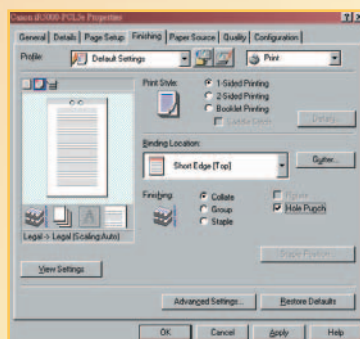
When equipped with optional eCopy™ ShareScan™ and Desktop™ software, the imageRUNNER 5000 permits walk-up users to scan and preview documents prior to distribution. Documents can be scanned in a variety of file formats and can be sent to multiple destinations—including E-mail addresses, a user's desktop, or a file repository. Desktop adds a powerful image manipulation tool for adding annotations, mark-ups, or converting scanned documents to editable text.



Scan to Mail Box Screen



Canon Page Composer Screen



Driver Properties Finishing Tab

\*Check with your local Canon-authorized Dealer for availability.

# An All-star Player Sporting all the Tools

The imageRUNNER 5000, like all Canon networked systems, comes equipped with a comprehensive set of system utilities designed to simplify operation and management for both end-users and network administrators. Through these tools, Canon eases device installation and network management while supplying a level of device status and job-management capabilities unmatched in the industry.

## You Need to do More than Just Connect to the Network

Basic network connectivity is just that—basic. To truly support customer requirements, networked devices must be easy to install, seamlessly integrate with existing network-management applications, and permit management from anywhere in the enterprise. Canon’s comprehensive solution to these customer requirements is embodied within Canon’s suite of software utilities as outlined below:

**Remote UI:**™ Canon’s Remote UI utility transforms a user’s desktop into a remote access center for the imageRUNNER 5000. By entering the IP address of the device from a standard web browser, users gain instant access to device status and settings, job-management functions, user Mail Boxes and more—with no additional hardware or software required.

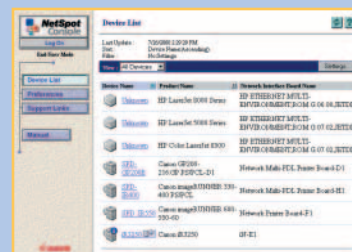
**NetSpot Console:** NetSpot Console is a web-based installation and management utility capable of installing and managing Canon networked systems, including the imageRUNNER 5000, on most customer networks. Through NetSpot Console, network administrators are

provided a convenient, platform-independent utility to install and manage Canon devices from anywhere within the enterprise. In addition to basic installation support, NetSpot Console also delivers administrator alerts, notifying administrators of device status conditions such as low toner, paper jams, and others. For added convenience, NetSpot Console is also capable of managing third-party printers complying with the standard Printer MIB, thereby consolidating network device management via one utility.

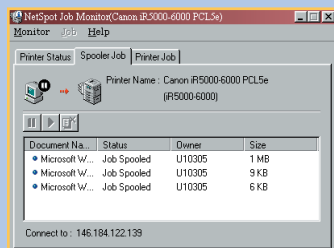
**NetSpot Job Monitor:** To track the progress and manage print jobs, Canon supplies NetSpot Job Monitor. Using this utility, end-users can track the progress of jobs sent for printing. NetSpot Job Monitor runs as an automated task in the Windows® System Tray, and can be configured to report job conditions based on administrator or end-user preferences. Significant to NetSpot Job Monitor is its ability to deliver end-of-job notification to end-users, ensuring that they are always informed of the completion of submitted work.



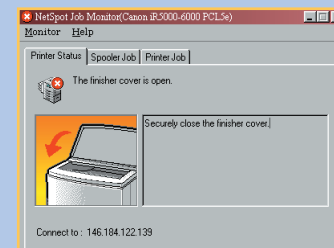
Remote UI  
Job Status



NetSpot Console  
Device List Selection



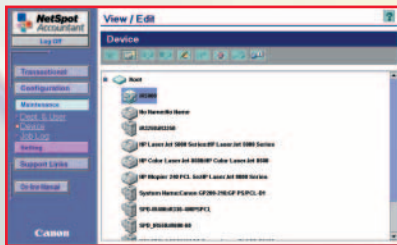
NetSpot Job Monitor  
Spooler Job Tab



NetSpot Job Monitor  
Status Notification Device

**NetSpot Accountant:** NetSpot Accountant is an optional utility for the imageRUNNER 5000 that is capable of providing comprehensive job tracking and analysis for cost-accounting and workflow optimization. Using NetSpot Accountant, network administrators can track all activity at the imageRUNNER 5000, including copying, printing and scanning, and billing internal or external clients for device utilization. A wide range of configuration settings are available for NetSpot Accountant, enabling administrators to track device usage in a myriad of ways. NetSpot Accountant is ideal for Legal customers, or any customer who desires to account for imageRUNNER 5000 device utilization.

**Enterprise-management Integration:** In addition to the NetSpot utilities mentioned above, Canon also supplies plug-in modules for the most popular enterprise-management applications in use today. Included in this list of supported applications are Microsoft® Management Console, CA-Uncenter TNG®, HP OpenView, Tivoli NetView, and BMC Patrol®. Through these plug-ins, Canon permits easy management of the imageRUNNER 5000, and other Canon networked devices, from directly within the enterprise-management system console.



*NetSpot Accountant  
Device List Display*

## An Impressive Team

Canon's pioneering efforts in creating the digital multifunction marketplace have provided us with a considerable advantage in identifying emerging customer needs. This experience, combined with our exhaustive funding of new research and development, has allowed us to assume a commanding position in today's office and production environments.

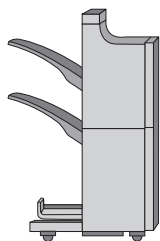
Our goal is simple: to provide you with the best solutions to your document- and information-management needs.

Whether it be the Canon imageRUNNER 5000, or other Canon imageRUNNER product offerings, we think you will agree that Canon's functional and integrated network capabilities set new benchmarks in the marketplace, and clearly enable our customers to drive greater levels of productivity, efficiency, and competitive advantage.

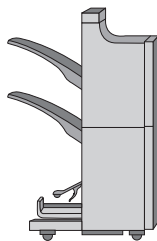
The screenshot shows the 'Printing Unit Cost Settings' dialog box. It has a checkbox for 'Apply to all job types' and a 'Job Type' dropdown menu set to 'Copy'. Below is a table with columns for 'Paper Size', 'BW Usage', 'Black Toner', 'Color Usage', and 'Full-color Toner'. The table lists various paper sizes and their corresponding usage values. At the bottom, there is a checkbox for 'Auto-calculate with conversion rate' and 'OK' and 'Cancel' buttons.

Paper Size	BW Usage	Black Toner	Color Usage	Full-color Toner
Letter	0.3200	0.1000	0.5000	0.5000
Legal	0.0500	0.0500	0.5000	0.7000
11x17	0.1000	0.1000	0.3000	0.7000
Executive	0.2000	0.2000	0.3000	0.6000
Envelope	0.0500	0.0500	0.0500	0.1000
A4	0.1000	0.0100	0.0100	0.0500
A3	0.1000	0.0100	0.0100	0.5000
B4	0.1000	0.0100	0.0100	0.0500
B5	0.1000	0.0100	0.0100	0.0500
A5	0.1000	0.0100	0.0100	0.0500
Postcard	0.0100	0.0100	0.0100	0.0500
Double Postcard	0.0100	0.0100	0.0100	0.0500
Envelope 110x148	0.0500	0.0500	0.0500	0.1000

*NetSpot Accountant  
Auto Calculation Settings*



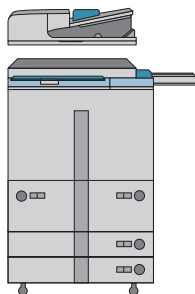
Finisher-F1



Saddle Finisher-F2



Puncher Unit-B1\*\*



imageRUNNER 5000



Paper Deck-G1

## imageRUNNER 5000 Specifications

TYPE:	Digital, Multifunction Imaging System
IMAGING SYSTEM:	Laser Dry Electrostatic Transfer
DEVELOPING SYSTEM:	Dry Monocomponent Toner Projection
IMAGE SERVER MEMORY:	Standard 128MB RAM + 5.1GB HDD (Max. Capacity: Approximately 4,000 Originals)
FIRST-COPY TIME:	3.8 Seconds from Platen Glass 5.1 Seconds from ADF
WARM-UP TIME:	5 Minutes or Less
ACCEPTABLE ORIGINALS:	Sheets, Books, 3-Dimensional Items (Up to 4.4 lb.)
MAX. ORIGINAL SIZE:	11" x 17" (Ledger)
MAX. COPY SIZE:	11" x 17" (Ledger)
MIN. COPY SIZE:	4-1/8" x 5-7/8"
MAX. MAIL BOXES SUPPORTED:	100
MAX. COPY RESERVATION:	5 Jobs
COPY/SCANNING RESOLUTION:	600 dpi x 600 dpi
PRINTING RESOLUTION:	600 dpi x 600 dpi
HALFTONE:	256 gradations of gray
COPY SPEED:	50 cpm (Letter) 39 cpm (Letter-R) 36 cpm (Legal) 30 cpm (Ledger)
DUPLEXING:	Standard Automatic Trayless Duplexing
MAGNIFICATION REDUCTION/ENLARGEMENT:	25% to 400% in 1% increments
PAPER SUPPLY STANDARD:	Dual Front-loading Trays (1,500 Sheets Each) Dual Front-loading Cassettes (550 Sheets Each) 50-sheet Stack Bypass 3,500-sheet Paper Deck (Total: 7,650 Sheets)
OPTIONAL:	
MULTIPLE COPIES:	1 to 999
PAPER WEIGHTS:	17 to 24 lb. Bond (550-sheet Cassettes) 17 to 110 lb. Index (Manual Bypass, 1,500-sheet Drawers and 3,500-sheet optional Paper Deck-G1)
DIMENSIONS (H x W x D):	44-3/4" x 25-3/8" x 29-1/4" (1,136mm x 643mm x 743mm)
WEIGHT:	462 lb. (210kg)

## Supplies

DRUM:	Amorphous Silicon – Estimated Yield: 3,000,000 Impressions
MAXIMUM DUTY CYCLE:	200,000 Impressions per Month
TONER:	Magnetic Negative Toner – Estimated Yield: 33,000 Images (at 6% Coverage)

## ACCESSORIES

## Automatic Document Feeder (Standard)

ACCEPTABLE ORIGINALS:	Statement to Ledger
CAPACITY:	100 Sheets (Letter/20 lb.)
MAX. PAPER WEIGHT:	Up to 32 lb. Bond (Letter)

## Finisher-F1 (Optional)

NUMBER OF TRAYS:	2 Trays
TRAY CAPACITY	
TOP TRAY:	1,000 Sheets (Letter) 500 Sheets (Ledger) Offset Stacking: Max. 30 Sets (All Sizes)
LOWER TRAY:	1,000 Sheets (Letter) 500 Sheets (Ledger) Offset Stacking: Max. 30 Sets (All Sizes)
STAPLE POSITION:	1-Top Corner 2-Side Margin
MAX. STAPLING CAPACITY:	50 Sheets (Letter/Statement) 30 Sheets (Letter-R/Legal/Ledger)
POWER SOURCE:	Directly from Main Unit
DIMENSIONS (H x W x D):	41-3/8" x 26-3/8" x 24-1/4" (1,052mm x 669mm x 614mm)
WEIGHT:	70.5 lb. (32kg)

## Saddle Finisher-F2 (Optional)

NUMBER OF TRAYS:	2 Trays
TRAY CAPACITY	
TOP TRAY:	1,000 Sheets (Letter) 500 Sheets (Ledger) Offset Stacking: Max. 30 Sets (w/staple) (All sizes)
LOWER TRAY:	1,000 Sheets (Letter) 500 Sheets (Ledger) Offset Stacking: Max. 30 Sets (w/staple) (All sizes)
SADDLE-STITCH TRAY:	300 Sheets
STAPLE POSITION:	1-Top Corner 2-Side Margin
MAX. STAPLING CAPACITY:	50 Sheets (Letter/Statement) 30 Sheets (Letter-R/Legal/Ledger)
SADDLE-STITCH TRAY STAPLING CAPACITY:	15 Sheets
FOLDING:	V-folding Standard
POWER SOURCE:	Directly from Main Unit
DIMENSIONS (H x W x D):	41-3/8" x 26-3/8" x 24-1/4" (1,052mm x 669mm x 614mm)
WEIGHT:	114 lb. (52kg)

## Puncher Unit-B1\*\* (Optional)

MAX. PAPER WEIGHT:	Up to 110 lb. Index
PUNCH TYPES:	2-hole/3-hole (Auto change) 3-hole (Letter/Ledger) 2-hole (Legal/Letter-R)
PUNCH DUST STOCK:	Approximately 3,000 Sheets
POWER SOURCE:	Directly from Main Unit
DIMENSIONS (H x W x D):	34-7/8" x 3" x 24-1/4" (886mm x 75.5mm x 614mm)
WEIGHT:	11.9 lb. (5.4kg)

## Paper Deck-G1

PAPER CAPACITY:	3,500 Sheets
PAPER SIZE:	Letter
PAPER WEIGHT:	17 lb. Bond to 110 lb. Index
POWER SOURCE:	Directly from Main Unit
DIMENSIONS (H x W x D):	20-1/2" x 12-3/4" x 33" (519mm x 323mm x 583mm)
WEIGHT:	90.3 lb. (41kg)

## Network Multi-PDL Printer Kit-Az (Optional)

PROCESSOR:	Custom Processor with Accelerator—Shared
RAM:	192MB(Std./Max.)—Shared
HARD DISK:	5.1GB—Shared
PDL SUPPORT:	PCL 5e, PCL 6, PostScript 3 Emulation
INTERNAL FONTS:	136 PostScript Fonts 117 Adobe Type Fonts 19 TrueType® Fonts 80 PCL Roman Fonts 32 PCL Bar-code Fonts Rj-45 (10/100Base-T)
INTERFACE CONNECTIONS:	IEEE 1284 (Compatibility: Nibble, Byte and ECP mode)
PROTOCOL STACKS:	Token Ring* (Optional Card) IPX/SPX: 802.2, 802.3, Ethernet II, 802.2 SNAP TCP/IP: SENS for Tornado from WindRiver
NETWORK OS:	AppleTalk: 802.2 SNAP and AppleTalk Phase II only Novell® NetWare® v.3.2, 4.1, 4.11, 4.2, 5 (IPX/SPX) Windows 95/98 (TCP/IP) Windows NT® 4.0 (TCP/IP) Windows 2000 (TCP/IP) Solaris™ 1.x, 2.5 or later (TCP/IP) Apple® System 7.5 or higher (DDP)

## Canon imagePASS-L1 Print Controller (Optional)

HARDWARE:	External Stand-alone Controller
PROCESSOR:	Intel Celeron 366MHz
MEMORY:	128MB DIMM
STORAGE:	10.2GB Hard Disk Drive
PDL SUPPORT:	Adobe PostScript 3, PCL 5e, PCL 6, P/L
INTERFACE CONNECTIONS:	Rj-45 (10/100Base-T) IEEE 1284
PROTOCOL STACKS:	Token Ring* (Optional Card) Ethernet IPX/SPX: 802.2, 802.3, Ethernet II, 802.2 SNAP (TCP/IP) AppleTalk: 802.2 SNAP and AppleTalk Phase II
NETWORK OS:	Novell NetWare v.3.2, 4.1, 4.11, 4.2.5, 5.1 Windows 95/98/Me Windows NT 4.0/2000/XP Solaris 1.x, 2.5 or later Apple System 8.6 or higher NDPS, Port 9100, IPP
PRINT SERVICE:	Network ScanGear, Remote UI, NetSpot (except Job Monitor)
ADDITIONAL FUNCTIONS SUPPORTED:	Standard: Command WorkStation, Fiery Downloader,™ Fiery Link,™ WebTools

\* CHECK WITH YOUR LOCAL CANON-AUTHORIZED DEALER FOR AVAILABILITY.

\*\* PUNCHER UNIT-B1 CAN ONLY BE USED WITH THE FINISHER-F1 AND SADDLE FINISHER-F2.

As an ENERGY STAR® Partner, Canon U.S.A., Inc. has determined that this product meets the ENERGY STAR® guidelines for energy efficiency. The ENERGY STAR name is a registered trademark of the U.S. Environmental Protection Agency. Intel and Celeron are registered trademarks of Intel Corporation. Adobe and PostScript are registered trademarks of Adobe Systems Incorporated in the United States and/or other countries. Fiery is a registered trademark of Electronics for Imaging, Inc. in the U.S. Patent and Trademark Office and certain other foreign jurisdictions. EFI, DocBuilder, Command WorkStation, FreeForm, Fiery Downloader, and Fiery Link are trademarks of Electronics for Imaging, Inc. Microsoft, Windows and Windows NT are registered trademarks of Microsoft Corporation in the United States and/or other countries. TrueType, AppleTalk, and Apple are trademarks of Apple Computer, Inc., registered in the U.S. and other countries. Novell and NetWare are registered trademarks of Novell, Inc. in the United States and other countries. IPX/SPX is a trademark of Novell, Inc. Solaris is a trademark of Sun Microsystems, Inc. in the United States and other countries. eCopy, ShareScan and Desktop are trademarks of eCopy, Inc. Unicenter TNG is a registered trademark of Computer Associates International. Patrol is a registered trademark of BMC Software, Inc. Canon and NetSpot are registered trademarks, and IMAGERUNNER, Canon Know How, and the GENUINE logo are trademarks of Canon Inc. Remote UI is a trademark, and IMAGEANYWARE is a service mark of Canon U.S.A., Inc. All other terms and product names may be trademarks or registered trademarks of their respective owners, and are hereby acknowledged.

Specifications subject to change without notice.

0030W704

0502-IR5000-40M

PRINTED ON RECYCLED  
PAPER IN THE U.S.A.

Canon KNOW HOW™

1-800-OK-CANON  
www.usa.canon.comCanon U.S.A., Inc.  
One Canon Plaza  
Lake Success, NY 11042