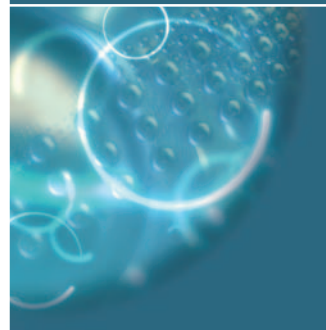
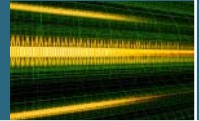
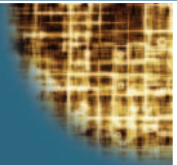


imageRUNNER™  
1600/2000



## DIGITAL MULTIFUNCTIONAL SOLUTIONS FOR WORKGROUPS AND SMALL BUSINESS



**Introducing the imageRUNNER™ 1600 and imageRUNNER 2000 from Canon, two powerful systems designed to address the ever-increasing demands of small businesses and busy workgroups.**

### **Set New Standards For Office Productivity Without Setting Back Your Budget**

Canon designed the compact imageRUNNER 1600 and imageRUNNER 2000 digital copiers to deliver high quality and productivity for the needs of small businesses and busy workgroups alike. You may select the entry-level imageRUNNER 1600 for smaller workgroups or, for higher-volume output, you may choose the more powerful imageRUNNER 2000. No matter which model you select, the flexible, modular design allows a seamless configuration to suit your exact needs. And with the ability to add network printing if and when you dictate, you can protect your investment as your business grows.

digital



Automatic Document Feeder



Paper Cassettes



Internal Finisher

## Canon Digital Technology Advantages

Unlike conventional analog copiers, digital technology streamlines the entire document-imaging process. With Scan-Once-Print-Many technology, original images are converted into digital signals, then reproduced from memory with unsurpassed image quality, regardless of whether you're printing or copying text, graphics, or photographs. The imageRUNNER 1600 and imageRUNNER 2000 capture every detail, with support up to 1,200 x 600 dpi resolution for copy jobs, and an astounding 2,400 x 600 dpi interpolated resolution for network printing. Best of all, you'll enjoy a new level of productivity, not to mention the reliability of a renowned industry leader like Canon.

## Flexibility of Input, Throughput, and Output

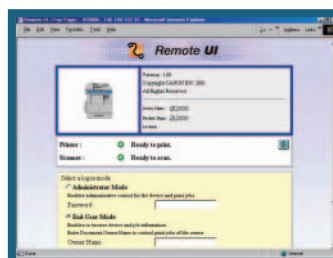
For optimum document-feeding productivity, there's an optional 50-sheet Automatic Document Feeder that makes quick work of handling multipage originals. To minimize paper reloading chores, you may boost the maximum paper capacity of the imageRUNNER to 1,100 sheets with up to four 250-sheet paper cassettes, plus a 100-sheet Stack Bypass tray. Innovative, space-saving finishing options include a built-in finisher that offers full sorting and stapling functions for a more professional look, or an inner tray system that separates copies and prints for fast distribution.

## Exceptional Ease-of-use

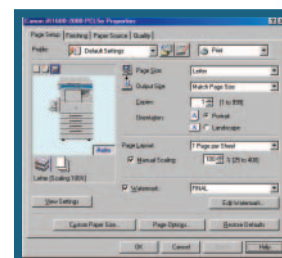
An intuitively designed control panel at the device provides effortless operation in walk-up environments. When connected to your network, Canon-supplied device drivers and utilities allow end-users to leverage full system capabilities of the imageRUNNER right from their desktops. The imageRUNNER 1600 and imageRUNNER 2000 serve as excellent primary or secondary network printers within the workgroup, making it easy to print on page sizes up to 11" x 17" paper with full document-finishing support. Designed for maximum output quality and throughput speed, they print razor-sharp, letter-sized pages at 16 pages (imageRUNNER 1600) and 20 pages (imageRUNNER 2000) per minute. Parallel and USB ports are also available for printing from non-networked computers.

## The Image of a Leader

As the leading producer of network-connected multifunction devices in the industry, Canon continues to set new standards for quality, performance, and reliability. That's why you can trust Canon to provide you with the solutions you need to make any workgroup more productive, and any business more competitive.



Remote UI™



Print Driver Page Setup Tab



## imageRUNNER 1600/2000 Specifications

Type:	Digital, Multifunction Imaging System
Imaging System:	Laser Dry Electrostatic Transfer
Developing System:	Dry Monocomponent Toner Projection
Fixing System:	Heat Roller Fusing
Image Server:	Standard 16MB (Approx. 120 Pages) Up to 48MB Max.
First-copy Time:	8.2 Seconds (Platen Glass, Letter, Direct, Paper Drawer 1)
Warm-up Time:	30 Seconds or Less (Main Power Switch On) 10 Seconds or Less (Operation Panel Switch On)
Output Speed:	1600: 16 ppm (Letter) 2000: 20 ppm (Letter)
Max. Copy Reservation:	No limit (Up to Memory Capacity)
Scanning Resolution:	600 dpi x 600 dpi
Engine Resolution:	600 dpi x 600 dpi
Interpolated Resolution:	1,200 dpi x 600 dpi (Copy) 2,400 dpi x 600 dpi (Print)
Halftone:	256 Gradations of Gray
Duplexing:	Not Supported
Magnification:	50% to 200% (in 1% Increments)
Preset Reduction:	50%, 64%, 73%, 78%
Preset Enlargement:	121%, 129%, 200%
Paper Supply	
Standard:	1600: 1 x 250-sheet Paper Cassette 2000: 2 x 250-sheet Paper Cassette 100-sheet Stack Bypass
Optional:	1600: 1 x 250-sheet Paper Cassette 3 x 250-sheet Paper Cassette 2000: 2 x 250-sheet Paper Cassette
Exposure Control:	Automatic or Manual (9 Levels)
Multiple Copies:	1 to 99
Max. Original Size:	11" x 17" (Ledger)
Acceptable Paper Weights	
Paper Drawer:	16 lb. to 24 lb. Bond (64 - 90 g/m <sup>2</sup> )
Stack Bypass:	16 lb. to 32 lb. Bond (64 - 128 g/m <sup>2</sup> )
Power Source:	120V, 60Hz, 10A
Drum:	OPC—Estimated Yield: 21,000 Impressions
Max. Duty Cycle:	50,000 Impressions Per Month
Toner:	Estimated Yield: 7,850 Images (at 6% Coverage)
Dimensions (H x W x D):	1600: 22" x 24-1/4" x 24-3/4" (560mm x 615mm x 631mm) 2000: 25-3/8" x 24-1/4" x 24-3/4" (645mm x 615mm x 631mm)
Weight:	1600: 84 lb./38kg 2000: 96 lb./43.4kg

### Accessories

**Automatic Document Feeder-J1 (Optional)**  
Acceptable Original Size: Statement to Ledger  
Paper Capacity: 50 Sheets (20 lb. Bond/Letter)  
Acceptable Paper Weight: 14 lb. to 28 lb. Bond (Letter)

**Cassette Feeding Module-F1 (Optional)**  
Paper Capacity: 1 x 250-sheet Paper Cassette  
Paper Size: Statement to Ledger  
Acceptable Paper Weight: 16 lb. to 24 lb. Bond  
Connectable Device: imageRUNNER 1600

**Cassette Feeding Module-G1 (Optional)**  
Paper Capacity: 2 x 250-sheet Paper Cassettes  
Paper Size: Statement to Ledger  
Acceptable Paper Weight: 16 lb. to 24 lb. Bond  
Connectable Device: imageRUNNER 2000

**Cassette Feeding Module-H1 (Optional)**  
Paper Capacity: 3 x 250-sheet Paper Cassette  
Paper Size: Statement to Ledger  
Acceptable Paper Weight: 16 lb. to 24 lb. Bond  
Connectable Device: imageRUNNER 1600

**Inner 2-Way Tray-B1 (Optional)**  
Number of Trays: Two (with Main Tray)  
Capacity Per Tray: Top Tray: 100 Sheets (Letter)  
Main Tray: 250 Sheets (Letter)  
Paper Size: Statement to Ledger  
Staple Position: None

**Finisher-L1 (Optional)**  
Acceptable Paper Weight: 14 lb. to 28 lb. Bond  
Number of Trays: One Tray  
Tray Capacity: Non-collate/Collate Mode  
300 Sheets (Letter)  
Staple Mode  
30 Sets (Letter)  
Staple Position/Capacity: Top Corner/15 Sheets

**Printer Board-N1 (Optional)**  
Type: Embedded Print/Network Controller  
Processor: Power PC405 200MHz RISC Processor  
Memory: Standard 8MB (72MB Max.)  
Storage: Optional 10GB HDD  
PCL Support: PCL 5e, PCL 6, PostScript® 3™ (PS-Module B1)  
Internal Fonts: PCL 5e/6: 80 Roman Fonts, 32 Bar-code Fonts  
Interface Connections: Parallel (IEEE 1284)  
USB 1.1  
Optional RJ-45 (10/100Base-T)  
(Compatibility: Nibble, Byte, and ECP mode)

Other Features: Access to Full Finishing Features  
Remote UI Supported  
NetSpot® Supported  
Spooling Supported

**Ethernet Network Interface Adaptor IN-E5**  
CPU: ETRAX 100LX (32-bit RISC CPU 100MHz)  
Memory (RAM): 4MB  
Storage (ROM): 2MB (Flash)  
SDRAM: 128 Kbps  
Network I/F: 10Base-T, 100Base-TX (RJ-45)  
Printer I/F: EPS10 v. 1.00  
Network OS: Novell® NetWare® v.3.2, 4.1, 4.2, 4.11, 5.0, 5.1 (IPX/SPX™)  
Windows® 95/98/Me (TCP/IP)  
Windows NT® 4.0, 2000, Windows XP (TCP/IP)  
Mac OS 7.5 or later (DDP)  
Solaris™ 1.1.x, 2.5 or later (TCP/IP)

Protocol Stacks: IPX/SPX: 802.2, 802.3,  
Ethernet II, 802.2 SNAP,  
Canon NDP5 Gateway,  
TCP/IP, SMB,  
AppleTalk® 802.2 SNAP and  
AppleTalk Phase II only

### Other Accessories

- PS Module-B1
- 32MB Expansion Memory for Main Unit
- 32MB Expansion Memory for Printer Board-N1
- 64MB Expansion Memory for Printer Board-N1
- 10GB Hard Disk HD-65 for Printer Board-N1
- Flash™ ROM Module-FR-65
- FL Cassette-W1
- Large Cabinet
- Small Cabinet
- Card Reader-E1
- Basic Card Set
- Copy Card Set 2
- Copy Card Set 3

### Supplies/Consumables

- Staple-K1 (for Finisher-L1)
- Transparency Type E
- Black Toner
- Drum Unit

\* Standard Configuration of imageRUNNER 2000 shown;  
the imageRUNNER 1600 ships standard with one paper cassette.

\*\* Optional on the imageRUNNER 1600

▲ Optional on the imageRUNNER 2000

As an ENERGY STAR® Partner, Canon U.S.A., Inc. has determined that these products meet the ENERGY STAR® guidelines for energy efficiency. ENERGY STAR and the ENERGY STAR certification are registered U.S. trademarks. PostScript is a registered trademark of Adobe Systems Incorporated in the United States and/or other countries. Novell and NetWare are registered trademarks of Novell, Inc. in the United States and other countries. IPX/SPX is a trademark of Novell, Inc. in the United States and other countries. Solaris is a trademark of Sun Microsystems, Inc. in the U.S. and other countries. Flash is a trademark of Macromedia, Inc. Canon and NetSpot are registered trademarks, and IMAGERUNNER, Canon Know How, and the GENUINE logo are trademarks of Canon Inc. Remote UI is a trademark, and IMAGEANYWARE is a service mark of Canon U.S.A., Inc. All other terms and product names may be trademarks or registered trademarks of their respective owners, and are hereby acknowledged.

Specifications subject to change without notice.

**Canon** KNOW HOW™

1-800-OK-CANON  
www.usa.canon.com

Canon U.S.A., Inc.  
One Canon Plaza  
Lake Success, NY 11042

0035W496

1102-ir1600/2000-40M

PRINTED ON RECYCLED  
PAPER IN THE U.S.A.



Money Isn't All You're Saving

