

Canon

imageRUNNER®
1670F

imageRUNNER®
1630

imageRUNNER®
1310



WORKGROUP
SYSTEMS



imageRUNNER®
1670F / 1630 / 1310

WORKGROUP SYSTEMS

imageRUNNER 1670F/1630/1310— POWERFUL PRODUCTIVITY TOOLS FOR ANY SIZE OFFICE

Businesses of all sizes—from home offices and small offices to corporate workgroups—rely on documents to produce, preserve, send, and receive the information that is critical to their business success.

Canon's imageRUNNER 1670F/1630/1310 multifunction devices are the ideal productivity partners for organizations that need to print, copy, and fax documents (1670F only) using Super G3 Fax technology with digital, laser-quality output—all with desktop convenience.



Unsurpassed Print Quality at Speeds of up to 16 Pages Per Minute

Canon is a worldwide leader in the manufacturing of laser print engines that ensure the professional-quality document production that businesses count on. With a print resolution of 2400 x 600 dpi (enhanced), the imageRUNNER 1670F/1630/1310 provide the high-quality printing capabilities your business needs.

The imageRUNNER 1670F/1630/1310 offer powerful, dedicated printing performance—via a USB or Parallel Port with optional networking capabilities—to give you output you can rely on each time, every time.

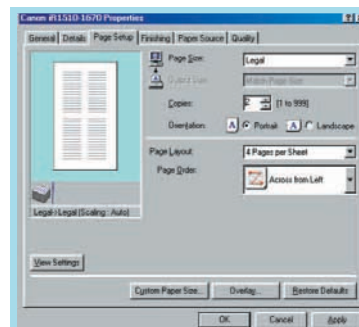
Easy to use and built for performance, the toner- and drum-based imageRUNNER 1670F/1630/1310 models utilize Canon Advanced Printing Technology (CAPT) to deliver 13

pages per minute on the imageRUNNER 1310 and 16 pages per minute on the imageRUNNER 1670F/1630.

When configured with an optional Network Adapter, all three models can be shared among multiple users as network printers.

With Canon device management utilities, you're assured

of simple device setup, as well as top-flight management and monitoring capabilities, to provide all the control you need.



CAPT Print Driver

PRINT...COPY...FAX

Efficiently Produce the Documents That Drive Business

Businesses depend on the ability to create, duplicate, and distribute the information that drives their success. The imageRUNNER 1670F/1630/1310 provide companies with the ability to meet those demands with a wide variety of the most commonly desired capabilities, and a range of user-friendly features that save both time and money.

Powerful Copying Capabilities at the Touch of a Button

The imageRUNNER 1670F/1630 models come with 16-page-per-minute digital image copying capability to provide 1200 x 600 dpi (enhanced) resolution.

Built to save time and increase efficiency, all three imageRUNNER digital multifunction devices streamline the entire document imaging process. The Scan-Once-Print-Many capability allows originals to be scanned only once, converted into digital images, and then reproduced in quantities of up to 99 sets. To increase productivity, Copy Reservation enables another document to be scanned while the first is being printed.

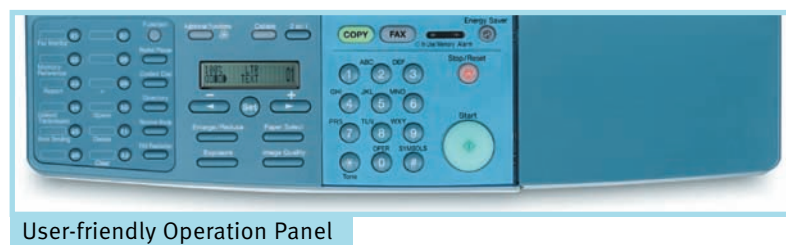
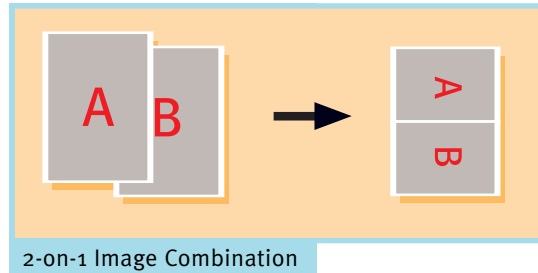
In addition, the imageRUNNER 1670F/1630/1310 offer such features as 2-on-1 Image Combination and Electronic Collation. Zoom Mode can be used to tailor documents, reducing or enlarging images from 50% to 200%, in 1% increments.

New Flexibility in Document Handling and Document Finishing

The imageRUNNER 1670F/1630/1310 models are built for performance. Whether the job is as simple as printing or copying a single-page document, or as complex as creating, duplicating, and collating a multipage report, these digital multifunction devices mean business.

With a standard 500-sheet letter- or legal-sized, user-adjustable paper cassette and a 100-sheet Stack Bypass ideal for various types of media, the imageRUNNER 1670F/1630/1310 models increase efficiency and provide the documents your company needs. In addition, the imageRUNNER 1670F/1630 each have a standard 30-sheet Automatic Document Feeder to make it easy to manage multipage originals.

A standard semi-internal Output Tray saves space and organizes output for speedy distribution. In addition, the intuitive design of the user-interface panel assures that any job can be programmed quickly and easily.



POWERFUL PRINT, COPY, AND FAX CAPABILITIES



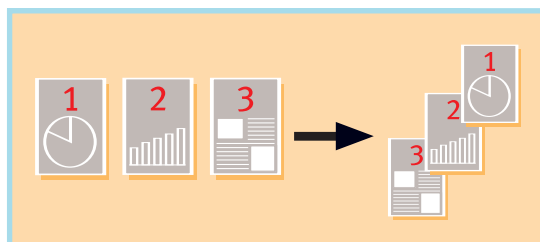
Increase Efficiency While Saving Money with Canon Laser-quality Super G3 Fax Technology

For companies that send and receive documents via fax, the imageRUNNER 1670F provides Canon's state-of-the-business Super G3 fax technology as a standard feature to ensure unsurpassed quality of both transmissions and receptions.

The fast transmission speed of approximately three seconds per page* means your business can realize reduced telephone line charges, while Canon's superior image quality ensures that sent and received documents will be clear and legible every time. In fact, using the built-in Canon Ultra High Quality (UHQ) image enhancement, the imageRUNNER 1670F provides maximum depth and clarity for text, photos, and graphics.

As a productivity tool, the imageRUNNER 1670F simplifies the most commonly used fax features. It offers high-capacity memory of up to 255 pages,** automatic dialing to speed up connections, and a convenient 30-sheet Automatic Document Feeder, standard.

What's more, the default setting on incoming fax documents provides face-up, in-order receptions that are collated last page first, first page last, so you don't need to spend time organizing and sorting pages.***



Collated Print-in-order Reception (1670F)

Keeping an Eye on the Bottom Line

With the imageRUNNER 1670F/1630/1310 models, Canon—a pioneer in designing and building network-connected multi-function devices—answers the needs of businesses. All three provide a return on investment based on their durability, reliability, and easy operation.

The imageRUNNER 1670F/1630/1310 models are all ENERGY STAR® qualified and conform to EPA standards. With Canon's award-winning RAPID Fusing System™, warm-up times are virtually eliminated and energy consumption is dramatically reduced.

The high-yield supplies and components used by the imageRUNNER 1670F/1630/1310 mean your business can depend on top-notch efficiency to stay up and running. In addition, with Canon technology to keep operational costs and downtime to a minimum, your business can be more productive and more competitive.

* Approximate 3-second-per-page fax transmission time based on ITU-T No. 1 Chart (BIG, Standard Mode) at 33.6 Kbps modem speed when transmitting to another V.34 machine. The Public Switched Telephone Network (PSTN) currently supports 28.8 Kbps modem speeds or lower, depending on telephone line conditions.

** Based on ITU-T No. 1 Chart (Standard Mode).

*** If there is insufficient memory to receive a document, the document will not print in page order, even if «PRINT IN ORDER» is set to "ON."

imageRUNNER—A Line of Powerful Multifunction Tools for Any Business

imageRUNNER 1670F

The imageRUNNER 1670F provides all the necessary tools for the most demanding environments, with support for digital printing and copying at 16 pages per minute, faxing, and a 30-sheet Automatic Document Feeder.



imageRUNNER 1630

The imageRUNNER 1630 provides digital laser copying and printing capabilities at 16 pages per minute, with the added convenience of a reliable 30-sheet Automatic Document Feeder.



imageRUNNER 1310

The entry-level imageRUNNER 1310 is both fast and efficient, delivering digital laser-quality copying and printing at 13 pages per minute.

imageRUNNER 1670F/1630/1310

Feature	imageRUNNER 1670F	imageRUNNER 1630	imageRUNNER 1310
Output Speed (LTR)	16 cpm/ppm	16 cpm/ppm	13 cpm/ppm
Digital Copying	Standard @ 1200 x 600 interpolated dpi	Standard @ 1200 x 600 interpolated dpi	Standard @ 1200 x 600 interpolated dpi
Scan-Once-Print-Many	Yes	Yes	Yes
Copy Reservation	Yes	Yes	Yes
Direct Printing	Standard @ 2400 x 600 interpolated dpi	Standard @ 2400 x 600 interpolated dpi	Standard @ 2400 x 600 interpolated dpi
Network Printing	Optional	Optional	Optional
30-sheet ADF	Standard	Standard	Not Available
Super G3 Faxing	Standard	Not Available	Not Available
Fax Memory	4MB (up to 255 pages*)	Not Available	Not Available
Std./Max. Memory	16MB	16MB	16MB
Max. Duty Cycle	20k impressions/mo.	20k impressions/mo.	20k impressions/mo.
Max. Paper Capacity	500-sheet cassette + 100-sheet bypass	500-sheet cassette + 100-sheet bypass	500-sheet cassette + 100-sheet bypass
Acceptable Paper Size	Statement to Legal	Statement to Legal	Statement to Legal
Zoom Range	50% - 200%	50% - 200%	50% - 200%
Copy/Print Quantity	Up to 99	Up to 99	Up to 99

*Based on ITU-T No. 1 Chart (Standard Mode).



imageRUNNER 1670F



imageRUNNER 1630



imageRUNNER 1310



Cabinet

Note: Optional Cabinet not shown to scale.

imageRUNNER 1670F/1630/1310 Specifications

Type:	Digital, Multifunction Imaging System
Imaging System:	Indirect Electrostatic Transfer
Developing System:	Dry Monocomponent Toner Projection
Fixing System:	RAPID Fusing System
Max. Original Size:	LGL
Image Server:	Standard 16MB (Max.)
Max. Copy Reservation:	No Limit (Up to Memory Capacity)
Scanning Resolution:	600 x 600 dpi
Engine Resolution:	600 x 600 dpi
Interpolated Resolution:	1200 x 600 dpi (Copy) 2400 x 600 dpi (Print)
Halftone:	256 Gradations of Gray
Paper Capacity:	1 x 500-sheet Paper Cassette 1 x 100-sheet Stack Bypass* (600 Sheets Max.)
Acceptable Paper Weight	
Cassette:	17 lb. to 20 lb. Bond
Stack Bypass:	16 lb. to 32 lb. Bond
Duplexing:	N/A
Magnification:	50% to 200% (In 1% Increments)
Preset Reduction/	
Enlargement:	50%, 64%, 78%, 129%, 200%
Multipage Copy Speed:	1310: 13 cpm (LTR) 1630/1670F: 16 cpm (LTR)
First-copy-out Time:	13 Seconds or Less (From Platen Glass)
Warm-up Time:	4.5 Seconds (From Power Plug-in)/ 1 Second (From Energy Saver Mode)
Multiple Copies:	1 to 99
Exposure Control:	Automatic or Manual (9 Levels)
Dimensions (H x W x D):	1310: 12-7/8" x 18-3/4" x 17-3/8" (327mm x 475mm x 442mm) 1630: 15-1/8" x 18-3/4" x 17-3/8" (384mm x 475mm x 442mm) 1670F: 15-1/8" x 18-3/4" x 17-3/8" (384mm x 475mm x 442mm)

Weight:	1310: 48.3 lb. (21.9kg) 1630/1670F: 52.9 lb. (24kg)
Power Source:	120V/60Hz, 3.8A
Drum:	OPC (Estimated Yield: 24,000 Copies)
Max. Duty Cycle:	20,000 Impressions Per Month
Toner:	Estimated Yield: Approx. 5,300 Images

ACCESSORIES

Automatic Document Feeder (Standard on 1630/1670F)**

Acceptable Original Size:	STMT, LTR, LGL
Paper Capacity:	30 Sheets (LTR, STMT)/20 lb. Bond
Acceptable Paper Weights:	14 lb. to 32 lb. Bond

Super G3 Fax Functionality (Standard on 1670F)****

Applicable Line:	Public Switched Telephone Network (PSTN)
Connection Lines:	One Line
Effective Image Size:	STMT, LTR, LGL
Transmission Times:†	Approx. 3 Sec./Page 33,600 bps (Max.)
Compression System:	MH, MR, MMR, JBIG
Error Correction:	Yes (ECM)

Canon Advanced Print Technology (CAPT)

Printing Method:	Canon Advanced Printing Technology (CAPT)
Memory:	2MB
I/F Connectors:	IEEE 1284 Bi-directional Parallel, USB
Other Features Supported:	NetSpot Console V.4.00E NetSpot Device Installer V.3.01 Remote Diagnosis Server V.1.4 SP4/RDS Agent V.2.03

AXIS 1650 Print Server (Optional)

CPU:	AXIS ETRAX 100LX 32-bit 100MHz RISC
Memory (RAM):	8MB
Memory (ROM):	2MB (Flash™)
Supported Systems:	Windows® 98/Me/2000/XP/Server 2003▲
Printing Protocols:	Windows: TCP/IP
Supported Protocols	
TCP/IP:	LPD, FTP, BOOTP, ARP, RARP, DHCP, ICMP, IGMP, IP, TCP, UDP, HTTP, SLP v1/v2, SNMP v1, RawTCP, DNS, DDNS, WINS, SNTIP
Network Management:	NetSpot Device Installer, AXIS CAPT Print Monitor (for printer installation, can be used regardless of the printer type), SNMP-MIB II compliant (RFC1213), Canon MIB, Printer MIB (RFC1759), HOST MIB (RFC1514)
Printer Connection:	Parallel, USB (including USB Cable)
Power Consumption:	Max. 5.6W (From External Power Supply)
Weight:	0.18 lb. (.08kg)
Dimensions (H x W x D):	1-1/8" x 2-1/2" x 4-5/8" (29mm x 62mm x 117mm)
Other Accessories	
LTR/LGL Cassette:	500 Sheets
Cabinet:	25-5/8" x 18-7/8" x 17" (650mm x 479mm x 430mm)
Braille Label Kit-A1	

* Incoming facsimiles will pull paper from the cassette; paper cannot be pulled from the Stack Bypass Tray on the imageRUNNER 1670F.

** ADF is not available on the imageRUNNER 1310.

*** Fax functionality is not available on the imageRUNNER 1310 or the imageRUNNER 1630.

† Approximate 3-second-per-page fax transmission time based on ITU-T No. 1 Chart (JBIG, Standard Mode) at 33.6 Kbps modem speed when transmitting to another V.34 machine. The Public Switched Telephone Network (PSTN) currently supports 28.8 Kbps modem speeds or lower, depending on telephone line conditions.

▲ The imageRUNNER 1310 does not support Windows Server 2003.

Canon
image*ANYWARE*

As an ENERGY STAR® Partner, Canon U.S.A., Inc. has determined that these products meet the ENERGY STAR® guidelines for energy efficiency. ENERGY STAR and the ENERGY STAR mark are registered U.S. marks. Flash is a trademark of Macromedia, Inc. in the United States and/or other countries. Windows and Windows NT are registered trademarks of Microsoft Corporation in the United States and/or other countries. NetWare is a registered trademark of Novell, Inc. in the United States and other countries. CANON and IMAGERUNNER are registered trademarks, and RAPID FUSING SYSTEM and the GENUINE logo are trademarks of Canon Inc. in the United States and may also be registered trademarks or trademarks in other countries. IMAGEANYWARE is a trademark of Canon. All referenced product names and other marks are trademarks or registered trademarks of their respective owners. All specifications subject to change without notice. ©2005 Canon U.S.A., Inc. All rights reserved.

1-800-OK-CANON
www.usa.canon.com

Canon U.S.A., Inc.
One Canon Plaza
Lake Success, NY 11042

