

## CLC 5100



**GRAPHIC ARTS  
SYSTEMS**



# CLC 5100

## GRAPHIC ARTS SYSTEMS



WE RAISED THE BAR TO MEET YOUR RISING EXPECTATIONS WITH THE CANON CLC 5100 SYSTEM.

Infused with a host of productivity enhancements, expanded versatility, and the image quality only Canon can deliver, the CLC 5100 device is built to withstand the punishment of true production environments like yours. From its blazing 51-page-per-minute output speed to improved media flexibility, the CLC 5100 device enables you to execute color output tasks faster, and with more professional results.

Today, your customers are more demanding, end-users more particular. As applications become more sophisticated, you need updated solutions with the power to meet shorter deadlines and rising expectations. In the CLC 5100 device, Canon has implemented technologies that enable you to keep pace with the evolving needs of your production-level environment and offer services to meet expanding customer requests. Next-generation Canon ColorPASS print server technology transforms the CLC 5100 device into a complete, on-demand printing solution. Canon color servers provide the processing speed—plus the latest job and color management tools—to meet your exacting specifications for ideal color results, including the execution of variable image printing.

For corporate reprographic departments, this means the CLC 5100 device provides the power to meet peak-period demands while maintaining the highest possible image quality.

For print-for-pay establishments, this means the uptime and flexibility to accept any job and quickly produce salable, high-quality prints. Pamphlets, menus, postcards, signage, bleed images—the CLC 5100 system provides the versatility you need to meet any customer request.

For graphic arts professionals, this means access to precision color controls like ColorWise® 3 and the Fiery® Graphic Arts Package\* for results approaching offset quality.

Canon, a leader in digital color solutions, has the ultimate in-house production system for your high-volume, color-intensive environment—the CLC 5100 device.

\* Available as standard or optional on select ColorPASS models.

**SUPERIOR IMAGE QUALITY THAT'S FAST.  
DOCUMENT QUALITY THAT'S IMPRESSIVE.  
THE CLC 5100 DEVICE: A TOTAL PRODUCTION  
SOLUTION FOR YOUR WORKFLOW.**



It's all about the data. Installing the CLC 5100 device as a networked printing system is where the real power lies and the fun begins. In fact, over 90% of all CLC systems are sold connected to a Canon color server—and for good reason.

Choose from multiple Canon ColorPASS servers or the EFI's MicroPress®<sup>^</sup> for Canon. Every print controller solution is designed to meet the specific needs of your environment to take maximum advantage of CLC 5100 device functionality and to drive the engine at its rated 51-ppm speed.

Canon ColorPASS servers feature a system architecture on a Windows® XP platform. Their super-fast CPUs rapidly process large files with sophisticated graphics. Plus, ColorPASS servers offer a robust set of job and color management utilities that ensures professional document quality and precise color accuracy.



**Simple Network Integration**

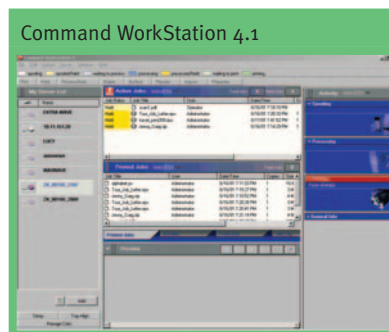
The first step is simple network integration. NetWise™ 3 makes CLC 5100 device installation a plug-and-play process. Its open architecture enables automatic switching between TCP/IP, AppleTalk®, and IPX/SPX™ for seamless integration into any network scheme. For environments requiring truly high-speed data communications, the ColorPASS controllers come standard with gigabit Ethernet capabilities.



NetWise 3 even allows users to send files as e-mail attachments to printers from any remote location. Need to capture or incorporate existing hard-copy images into electronic files? Fiery Remote Scan allows users the ability to scan multipage hard-copy documents and easily integrate them into their workflow.

**Powerful Job Management**

Speaking of control, Canon ColorPASS servers feature Command WorkStation for Windows and the Command WorkStation LE for Mac—powerful job management software solutions that allow users to monitor and manage all jobs and servers from a single screen. The improved UniDriver for Windows provides for user-customizable shortcuts, pop-up menu information, and draggable watermarks. The Job Properties window of Command WorkStation features UniDriver-like functionality to manage job programming through a single screen. Manipulate files with PitStop software, and translate reader spreads into paginated booklet form with DocBuilder Pro.™



<sup>^</sup> Check with your local Authorized Canon Dealer for availability.



### Revenue Opportunities

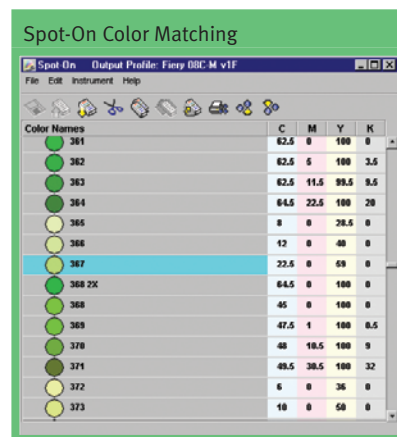
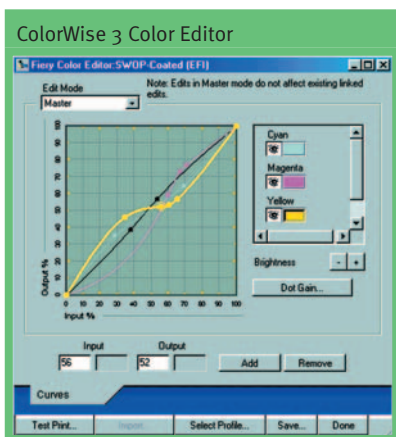
Need the versatility to generate customized documents for one-to-one marketing? ColorPASS technology lets you offer services you never could before, adding more value to your customer relationships, with cost-effective, full-color variable data printing. ColorPASS servers support the Fiery FreeForm™ 2 VDP utility, as well as PPML—the industry-standard language for executing variable data printing tasks, without proprietary hardware or applications.

### Advanced Color Controls

Both novice and color-critical users alike will appreciate the full spectrum of color management and calibration tools provided by ColorWise 3. Offering great out-of-the-box color, this feature-rich, color management software provides advanced users with a wide range of capabilities, such as downloading ICC profiles of other printing devices and editing or customizing color curves. These help achieve consistent color from all applications and platforms.

Plus, users have access to advanced calibration tools like Auto Gray and ColorCal®. These scanner-based calibration tools are ideal for environments where color consistency is critical. Aren't they all?

Color-intensive production environments can further enhance job control and color accuracy with Fiery's Graphic Arts Package, a set of optional power tools for color professionals that deliver precise control for any color-critical application. Use the Spot-On® feature to modify CMYK values to closer match their PANTONE® equivalents; select Auto Trapping to ensure proper registration and fit of adjacent colors; control halftone dot values; generate unlimited separations to proof jobs beyond traditional four-color process printing; simulate paper stocks to judge the effect media will have on inks; and, place jobs in Hot Folders to simplify workflows using predefined settings.





### Cluster Printing Solution

Need greater bandwidth to support document production over several machines? EFI's MicroPress for Canon clusters multiple color and black-and-white solutions into a powerful production output management system using one controller. Execute job splitting and load balancing to speed completion while retaining access to a number of advanced job and color management tools that streamline processes in production-level environments.

### Outstanding Performance

After your job is processed and all color and document settings have been made to your specifications, rest assured that every image will leap off the page, thanks to Canon's legendary image quality. Finer, Brighter (FB) Toner provides a color space larger than that of most competitive devices and commercial presses, so it can achieve subtle blends, smooth gradations, and crisp text. Automatic Image Refinement technology boosts CLC 5100 device output resolution to the equivalent of 800 x 400 dpi for the sharpest possible images, while Automatic Registration Adjustment self-calibrates for accurate image registration.

But CLC 5100 device versatility doesn't stop there. When it's time to put images to paper, the CLC 5100 system really

shines. Its four-way, 4,850-sheet standard paper supply offers expanded size and weight capacities so you can execute any job in-house. You can feed 12" x 18" heavy-weight and coated stocks up to 253gsm through the new 3,500-sheet Paper Deck-R1 or the 250-sheet Stack Bypass. Both 550-sheet paper drawers are user-adjustable for sizes up to 11" x 17" and in weights of up to 105gsm. Plus, its Stackless Automatic Duplex technology allows you to produce booklets and other two-sided documents on heavyweight media up to 163gsm from the paper deck. For manual duplex jobs, the optional Stack Bypass Alignment Tray delivers improved front-to-back registration.

### Hard-Copy Reproduction

Sometimes, you'll need to reproduce existing hard-copy originals. The optional 100-sheet RDF-E3 productively scans one- or two-sided originals as large as 11" x 17". A complete spectrum of color and image manipulation features is at every user's fingertips for the accurate reproduction or modification of existing hard-copy images. And, as always, every CLC 5100 device copy delivers brilliant color images and reveals fine details—even skin tones that other solutions find hard to reproduce.

Offset Stacker-B1



High-capacity Stacker TS-100



Catch Tray



### Professional Finishing

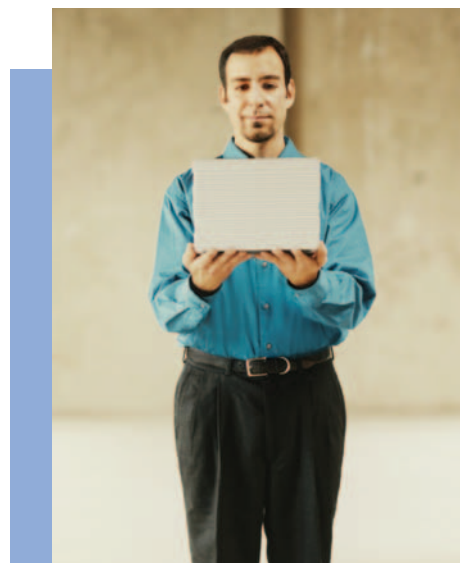
When you're ready to finish the job, no one comes close to matching Canon's finishing capabilities. For environments that utilize off-line finishing equipment, two Stacker options are available. Users can let long jobs run unattended with the 2,500-sheet High-capacity Stacker TS-100, while the 3,000-sheet Offset Stacker-B1 is designed for users who require offset capabilities.

The Nagel Finisher is an ideal fit for true production environments. With DocBuilder Pro imposing pages on the front end, and the powerful combination of the Nagel Booklet-maker and Trimmer on the back end, you'll have a complete solution for the professional production of saddle-stitched and trimmed booklets up to 64 pages

(16 sheets). And, because the Nagel Finisher handles stock weights greater than the duplexing capacity of the CLC 5100 system, you can use it as an off-line finishing device for manually duplexed jobs produced on the CLC device or to complement other printing equipment for media up to 253gsm.

From the start of your job—scanning, imposing, managing color—straight through to the finished, saddle-stitched, trimmed, and folded booklets, the CLC 5100 device is the ultimate solution for your high-volume production environment. And it's from Canon, the name you've come to trust for industry-leading color output solutions.

Nagel Finisher



## CLC 5100 Key Areas of System Functionality

### Connectivity Options

- Features a powerful Pentium® processor with a Windows® XP operating system
- Create full-color output sets with mixed media types within the same job
- Track job progress in real-time with the EFI® Job Monitor utility
- The enhanced Command WorkStation® offers an LE version for Macintosh®
- Preview jobs and scale images to fit selected paper sizes

### Built for the Long Run

- 51-ppm output speed
- Handling of heavy media at speeds up to 100% faster than previous CLC models
- A maximum monthly volume of 200,000 prints
- A number of CLC 5100 device internal enhancements all come together to allow for the fast, on-demand production of full-color documents on heavyweight media



### Media Versatility

- The CLC 5100 device provides a total 4,850-sheet paper capacity, with the ability to run heavy stocks at faster speeds
- The 3,500-sheet Paper Deck-R1 employs Canon's Air Assist technology for the reliable feeding of heavy-weight and coated media† up to 253gsm, and as large as 12" x 18"

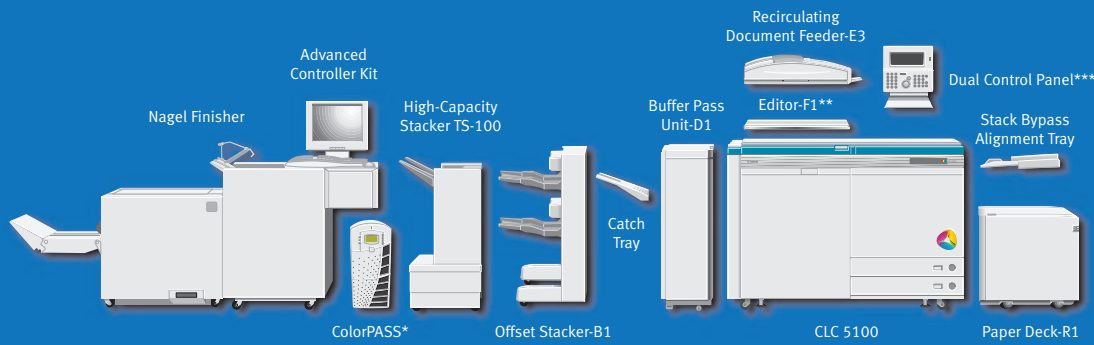
### Unsurpassed Finishing

- The 3,000-sheet capacity of the Offset Stacker-B1\*\* makes set separation fast by stacking printed sets in an offset manner for easy transfer to off-line finishing devices

\*\* Check with your local Authorized Canon Dealer for availability. Offset capability for printed documents only.

† Refer to Specialty Laser Media guide for compatibility.

# CLC 5100



## CLC 5100 Specifications

Technology:	Color Laser Electrophotographic
Acceptable Originals:	Sheets, Books, Solid Objects
Max. Original Size:	11" x 17"
Max. Output Size:	12" x 18"
Copy Sizes	
Drawer-Feeding:	Letter (8-1/2" x 11") Letter-R (11" x 8-1/2") Statement-R (8-1/2" x 5-1/2") Legal (8-1/2" x 14") Ledger (11" x 17")
Paper Deck-R1 (User-Adjustable):	Letter (8-1/2" x 11") Ledger (11" x 17") 12" x 18"
Stack Bypass:	Statement to 12" x 18"
Magnification	
Standard Mode:	100%
Preset Reduction:	25%, 50%, 64%, 73%, 78%
Preset Enlargement:	121%, 129%, 200%, 400%
Zoom Mode:	25% - 400% (in Increments of 0.1% and 1%)
Copy/Print Speeds	
Letter:	51 cpm (Full 4-color) 51 cpm (B/W)
Ledger:	25 cpm (Full 4-color) 25 cpm (B/W)
First-Copy Time:	14 Seconds
Warm-Up Time:	Less than 9 Minutes
Resolution:	400 x 400 dpi (8-bit), Equivalent Appearance of 800 x 400 dpi (Color Automatic Image Refinement)
Halftone:	256 Gradations
Paper-Feeding:	Two Front-loading Paper Drawers Plus Stack Bypass, Standard (2 x 550 + 250) Paper Deck-R1: 3,500 Sheets (Accepts Letter, Ledger, or 12" x 18")

Acceptable Paper Weights	
Drawer:	20 lb. to 28 lb. Bond (75gsm - 105gsm) and Transparency 17 lb. Bond to 140 lb. Index (64gsm - 253gsm)
Paper Deck-R1:	20 lb. Bond to 140 lb. Index (75gsm - 253gsm) and Transparency
Bypass:	20 lb. Bond to 140 lb. Index (75gsm - 253gsm) and Transparency
Max. Paper Capacity:	4,850 Sheets
Multiple Copies:	1 to 999
Duplexing:	Automatic/Manual
Power Source (Two):	208V/240V, 15A, 60Hz
Dimensions (H x W x D):	39.4" x 90.3" x 28.7" (1,000mm x 2,295mm x 730mm)
Weight:	1,217 lb. (552kg)
<b>Recirculating Document Feeder-E3 (Optional)</b>	
Acceptable Original Sizes:	Statement to Ledger
Original Tray Max. Capacity:	100 Sheets
Original Tray Paper Weight	
Top Tray:	20 lb. to 32 lb. Bond
SSDF:	10 lb. to 110 lb. Index
Power Source:	115V, 60Hz
Power Consumption:	120W or Less
Dimensions (H x W x D):	6-7/8" x 25-3/8" x 21-1/4" (174mm x 643mm x 539mm)
Weight:	52.9 lb. (24kg)
<b>Editor-F1** (Optional)</b>	
Area Designation:	Up to 200 Areas
Features:	Framing, Blanking, Area Editing
<b>Offset Stacker-B1 (Optional) *</b>	
Number of Trays:	2
Acceptable Paper Sizes:	Statement to 12" x 18"

Acceptable Paper Weights:	17 lb. Bond to 140 lb. Index (64gsm - 253gsm)
Tray Capacity (Each Tray):	1,500 Sheets (20 lb. Bond)
Shift Stacking:	For PDL Printed Documents Only

### High-Capacity Stacker TS-100 (Optional)

Media Types:	Plain Paper, Bond, Cover, Canon-Approved Transparencies, Coated Media
Acceptable Paper Sizes:	Width—Min. 5.5" Max. 12.0" Length—Min. 8.5" Max. 18.0"
Acceptable Paper Weights:	Up to 140 lb. Index/ 93 lb. Cover/250gsm No Offsetting
Capacity:	Up to 2,500 Sheets (Letter)
Docking:	Uses Magnetic Latching and In-line Casters
Electronic Interface with Copier:	None
Power Requirements:	115V, 60Hz
Dimensions (H x W x D):	33-1/2" x 20" x 19" (851mm x 508mm x 483mm)
Weight:	Approx. 70 lb. (31.75kg)

\* Requires optional IF Board-E1. Please contact your local Authorized Canon Dealer for ColorPASS options.

\*\* Requires optional ED Board-C1.

\*\*\* The CLC 5100 provides easy access from a seated position for wheelchair users, or users with limited upper-body mobility.

▲ Check with your local Authorized Canon Dealer for availability.

**IMPORTANT:** Whether coated paper can be used depends not only on the paper weight, but also on other factors such as the coating material and paper stiffness. For this reason, only use coated paper recommended for the CLC 5100/4000. Canon is not responsible for any damage incurred to the machine through the use of any other type of coated paper.

ColorWise, Command WorkStation, Fiery, EFI, Spot-On, ColorCal and MicroPress are registered trademarks of Electronics for Imaging, Inc. in the U.S. Patent and Trademark Office and certain other foreign jurisdictions. NetWise, DocBuilder Pro, and Fiery FreeForm are trademarks of Electronics for Imaging, Inc. Pentium is a registered trademark of Intel Corporation. Windows is a registered trademark of Microsoft Corporation in the United States and/or other countries. Macintosh and AppleTalk are registered trademarks of Apple Computer, Inc. IPX/SPX is a trademark of Novell, Inc. PANTONE is a registered trademark of Pantone, Inc. CANON and COLORPASS are registered trademarks, and the GENUINE logo is a trademark of Canon Inc. in the United States and may also be registered trademarks or trademarks in other countries. IMAGEANYWARE is a trademark of Canon. All referenced product names and other marks are trademarks of their respective owners.

Specifications subject to change without notice.  
©2006 Canon U.S.A., Inc. All rights reserved.

Federal Law prohibits copying of certain documents. Violators may be subject to penalties. We suggest that you check with your own legal counsel. Canon U.S.A., Inc. and Canon Canada, Inc. intend to cooperate with Law Enforcement agencies in connection with claims of unauthorized copying.

**Canon**  
image*ANYWARE*

1-800-OK-CANON  
www.usa.canon.com

Canon U.S.A., Inc.  
One Canon Plaza  
Lake Success, NY 11042

0059W491  
0206R-CLC5100-14M-P

PRINTED ON RECYCLED  
PAPER IN THE U.S.A.

