

Canon

imageRUNNER®
C5800 / C6800



CORPORATE
SYSTEMS



Color-enabled



imageRUNNER®
C5800 / C6800

CORPORATE SYSTEMS

THE LEADER IN ADVANCED
DIGITAL IMAGING EXPANDS
ITS LEGACY.

Experience the color-enabled
Canon imageRUNNER® C5800
and imageRUNNER C6800—
two networked digital imaging
systems designed to complement
your high-volume corporate
departmental needs.



Today's business slows down for no one. To be successful in this environment, you need a solution that can provide fast turnaround times while streamlining communication costs to allow your work—and your organization—to stand above the rest.

Recognizing these requirements, Canon has created the imageRUNNER C5800/C6800—two revolutionary digital multifunction solutions that offer the speed and versatility to keep pace with your business, while allowing you to add color to your usual black-and-white documents when you need it.

Best of all, the imageRUNNER C5800/C6800 offer a complete suite of functionality, along with advanced finishing capabilities and innovative communication features—all with the same industry-leading levels of performance, quality, and reliability you can expect only from Canon.



THE EPITOME OF TRUE PRODUCTIVITY

The Canon imageRUNNER C5800/C6800 leverage their impressive heritage for your high-volume requirements and reveal a whole new world of color to your office.



User-friendly Control Panel

The color-enabled imageRUNNER C5800/C6800 are designed to boost productivity and enhance efficiency in every aspect of your work. Offering advanced digital copying, Mail Box features, available network printing, Super G3 Fax, scanning, and sending functions, the systems are designed to simplify even the most challenging tasks, each in one compact, user-friendly device.

At the core of the imageRUNNER C5800/C6800 is Canon's Color imagePlatform architecture. More than a platform, this foundation acts as a springboard that will save you precious time and resources, both with the power to handle multiple tasks simultaneously and the unique ability to distribute information across a dynamic digital landscape.

To meet increasingly shorter deadlines, the Canon imageRUNNER C5800/C6800 offer black-and-white output speeds of up to 58/68 letter pages per minute (ppm) respectively. Plus, with their ability to deliver color output at 16 ppm, each system can handle your occasional color requirements as well, thereby eliminating outsourcing expenses and the need to maintain costly, stand-alone color laser beam printers. Fast scanning speeds of up to 70 ppm (300 dpi) and 50 ppm (600 dpi) in both color and black and white keep you and your documents moving along while capturing every brilliant detail.

Extensive document-handling options, finishing capabilities, and support for a variety of paper media, sizes, and weights, allow you to create exciting and attention-grabbing documents.

Like all imageRUNNER systems, users and administrators are provided with every necessary tool for quick, intuitive programming of all features, whether standing at the device using its large, full-color touch-screen interface panel, or from the desktop through device drivers and utilities supplied by Canon.



IMPRESSIVE PERFORMERS THAT MAKE GREAT TEAM PLAYERS.

Reliable image quality, uncompromising innovation, cost-effective operation—all the benefits you'd expect from Canon—and more!

Set New Expectations for Office Productivity

The imageRUNNER C5800/C6800 are equipped with the processing power and memory capacity to help eliminate bottlenecks and improve network efficiency. With an innovative dual processor design, 768MB RAM, and a 40GB hard disk as standard equipment, the systems can easily keep pace with your business.

Your business documents are a reflection of your organization. Make a positive impression every time with the imageRUNNER C5800/C6800. With support for 600 x 600 dpi scanning resolution and up to 2400 equivalent x 600 dpi printing resolution, the systems ensure that every image is sharp, every gradation is smooth, and every character is crisp.

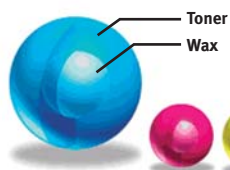
Designed to Go Distances that Others Wouldn't Dare

The imageRUNNER C5800/C6800 offer an innovative design with several enhancements that aid in device reliability and durability. A sturdy aluminum die-cast frame allows the device to stand up to the rigors of continuous long runs and high-output volumes.

High-yielding consumables and supplies significantly reduce operating costs and downtime. In its first implementation on a color-enabled device, the Canon Amorphous Silicon Drum (A-Si) delivers high reliability over millions of impressions for both black-and-white and color output. Canon monocomponent black toner delivers outstanding image quality for high-volume, black-and-white applications. For color applications, the imageRUNNER C5800/C6800 leverage Canon's oil-free S-Toners, producing eye-catching color with just a touch of gloss—perfect for office applications.

Other productivity-enhancing design characteristics include standard automatic duplexing, Canon's Intermediate Transfer Belt technology, and a shorter, flatter paper path that allows you to print on heavy stocks and specialty media. What's more, the imageRUNNER C5800 and imageRUNNER C6800 will print your entire document at their rated speeds, as there's no downtime when switching between black-and-white and color prints.

Canon Color S-Toner



High-yielding Toner Supplies



A-Si Drum



AN EASY-TO-USE SOLUTION IS THE ONLY SOLUTION.

Memory-enabled digital copying and Mail Box functions allow for greater document storage, creation, and manipulation capabilities than most comparable systems.

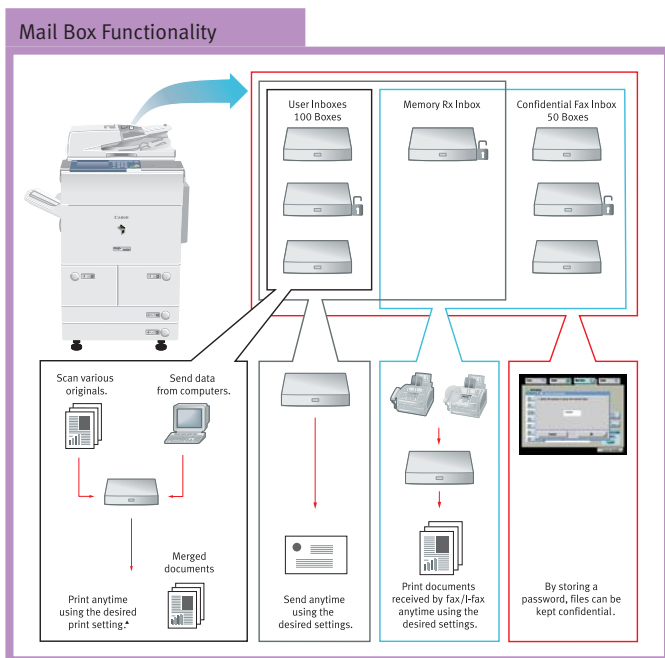


Digital Copying

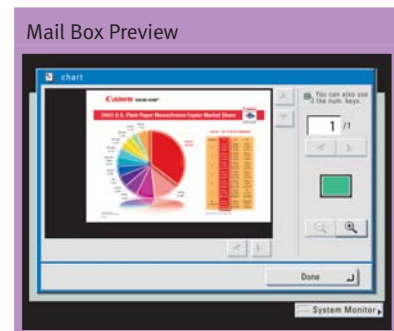
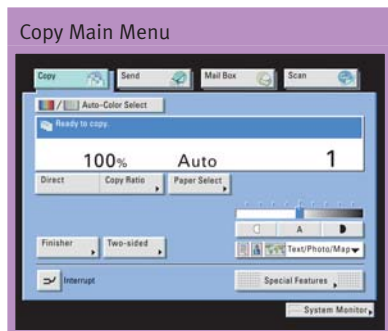
When there are short deadlines that must be met, the imageRUNNER C5800/C6800 are always up to the task. Canon has equipped each system with a number of digital copying features to enhance workflow, including Scan-Once-Print-Many, Copy Reservation, Job Done Notification, Job Build, Booklet Modes, Area Designation—and more!

Mail Box Features

The imageRUNNER C5800/C6800 support value-added Mail Box functions that may serve as your centralized system for information-sharing, on-site document storage, and print-on-demand applications. The Mail Box function can be used to store hard-copy-based originals such as receipts and frequently used forms, as well as print data such as presentations, proposals, and spreadsheets. Once stored in the Mail Box, documents may be combined and printed as one job with the desired settings or sent to other destinations.



*Some functions are not available when printing documents sent from a computer.



LEADING THE MOVEMENT TOWARDS INTEGRATED WORKFLOW SOLUTIONS.

Change the way your company communicates in color—effortlessly and inexpensively.

Color Universal Send™ Makes Seamless Workgroup Collaboration a Reality

Targeted to smaller departments and workgroups, Canon Color Universal Send technology (optional) allows users to scan and distribute documents to multiple destinations. These may include group or individual e-mail and Internet fax (I-fax) addresses, network or host folders, and document management applications such as Canon imageWARE™. This all-in-one operation eliminates the expense and administrative burden associated with using conventional methods of printing, filing, and forwarding hard-copy documents.

Enterprise-wide Communication Made Easy with eCopy

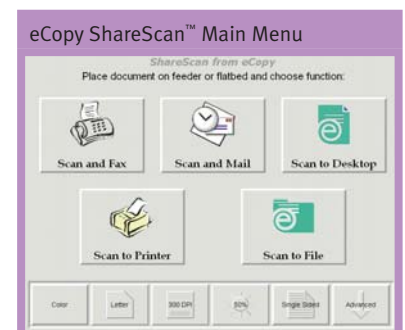
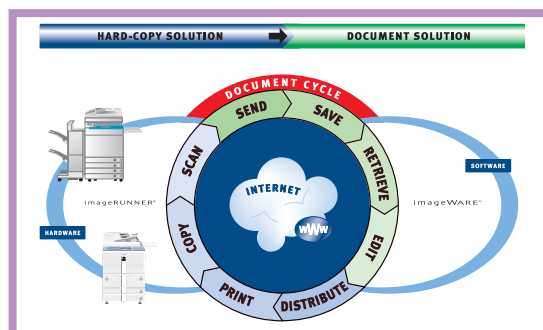
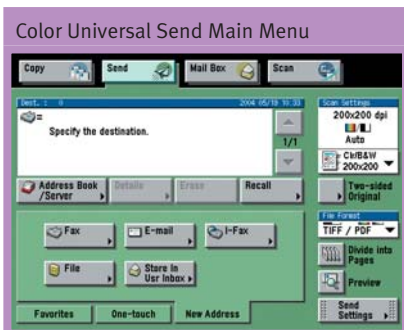
Convert your imageRUNNER C5800 or imageRUNNER C6800 into a sophisticated yet simple-to-use document distribution powerhouse. With the optional eCopy Suite of products, your organization can transform paper documents into information that's easily integrated into all your business applications. eCopy connects with your company's e-mail and other networked enterprise applications for secure and instantaneous distribution of information.

File Type Flexibility

When sending documents from your imageRUNNER device, whether it's through Color Universal Send or the eCopy Suite, you may select from several industry-standard formats to ensure that your documents can be easily viewed and printed by any recipient. Both options employ high-compression technology that allows even complex or detailed color pages to be efficiently handled over the network without affecting image/text legibility. The results are minimal network traffic and maximum impact on your audience.

Canon Fax Technology at Your Fingertips

Install the optional Super G3 Fax Board and transform your imageRUNNER C5800 or imageRUNNER C6800 device into an advanced, easy-to-use fax machine. Thanks to Canon superior image quality, you can be assured that both sent and received fax transmissions will be clear and legible. In addition, using the Fax Driver supplied by Canon, you can quickly and easily send documents as fax transmissions right from your desktop.



WORK SMARTER, NOT HARDER.

Intelligent document management solutions that are as flexible as they are user-friendly.

Scanning is a Snap with Color Network ScanGear

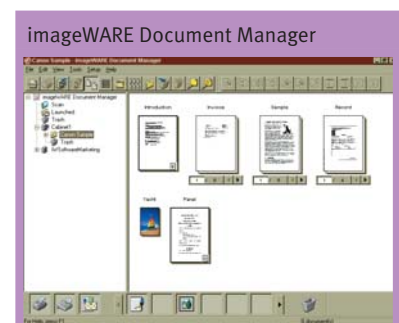
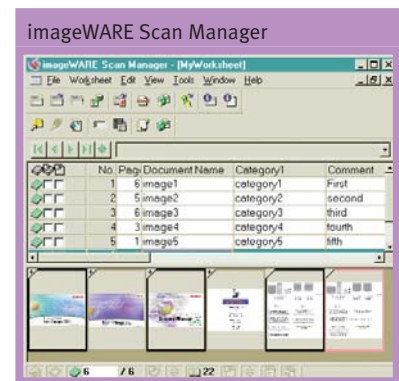
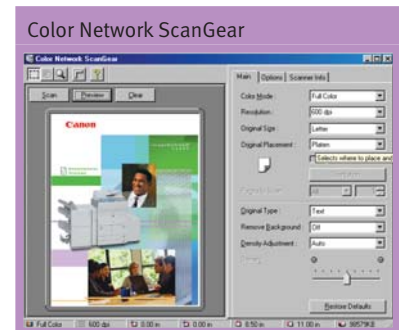
Canon Color Network ScanGear (optional) is a user-friendly scanning utility that can be used with any 32-bit TWAIN-compliant software application to pull scanned images from the imageRUNNER C5800/C6800 over a network to a destination PC or file server. Scanned images then can be manipulated at the user's workstation and incorporated into other documents as needed.

Integration with Canon imageWARE Software Suite

Integrate the powerful scanning capabilities of the imageRUNNER C5800/C6800 with the Canon optional imageWARE Software Suite for a comprehensive information capture, management, and distribution system.

Canon imageWARE Document Manager is a central database repository with a client-server architecture that can be scaled to meet growing business needs. This repository is designed to reduce or replace traditional hard-copy document storage methods in general office environments, supporting applications for retrieval, archival, and records management.

With the automatic scanning and indexing capabilities of imageWARE Scan Manager, your business can capture and convert high volumes of documents into digital data quickly and easily. Advanced image capture and data recognition improve the accuracy and usefulness of digitized, computer-based information.



COMPLEMENT YOUR CAPABILITIES ACROSS MULTIPLE USERS.

Leverage Canon's expertise on user networks and engine design to deliver a sense of distinction in all your work.

Color Network Printing

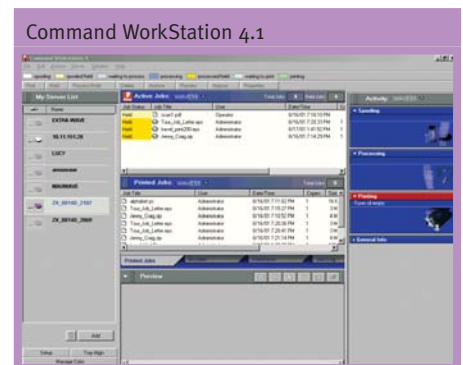
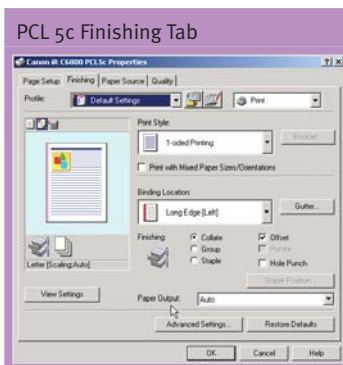
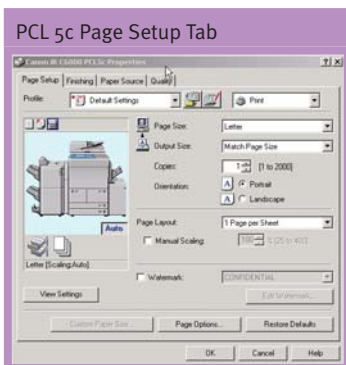
When it comes to printing, nobody does it better than Canon, and no other solution gives you more flexibility than the imageRUNNER C5800/C6800.

You may choose from two print controller options, the Canon Color Network Multi-PDL Printer Kit-C1 or the imagePASS-D1, co-engineered by Canon in partnership with EFI.

The Color Network Multi-PDL Printer Kit-C1 delivers color printing capabilities best suited for general office environments, with support for PCL 5c and PostScript® 3™ emulation, and Canon's proprietary Ultra Fast Rendering (UFR) technology. This new UFR technology utilizes a recently invented printing algorithm to minimize file processing time and achieve maximum performance.

For higher bandwidth printing requirements, the imagePASS-D1 features its own hardware dedicated to printing applications, and supports genuine Adobe® PostScript 3 and PCL 5c emulation. Plus, users can benefit through the value-added capabilities of EFI Command WorkStation® utilities.

Whichever print controller option you choose, you'll get maximum image quality and system performance. Through intuitively designed print drivers, you can start the document creation process right from your desktop with the ability to access page layout, document finishing, and image quality settings.



ELEVATE YOUR EXPECTATIONS FOR EFFICIENCY AND EXCELLENCE.

It's not merely a new way of printing—
it's a new way of working.



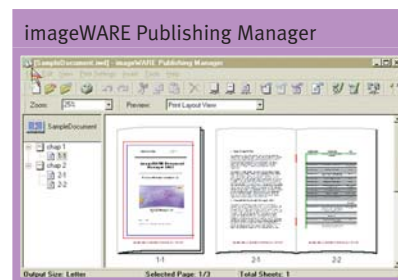
A New Level of Printing Flexibility

Canon has equipped the imageRUNNER C5800/C6800 with capabilities not found on dedicated single-function, color laser printers. Some of these enhanced capabilities include:

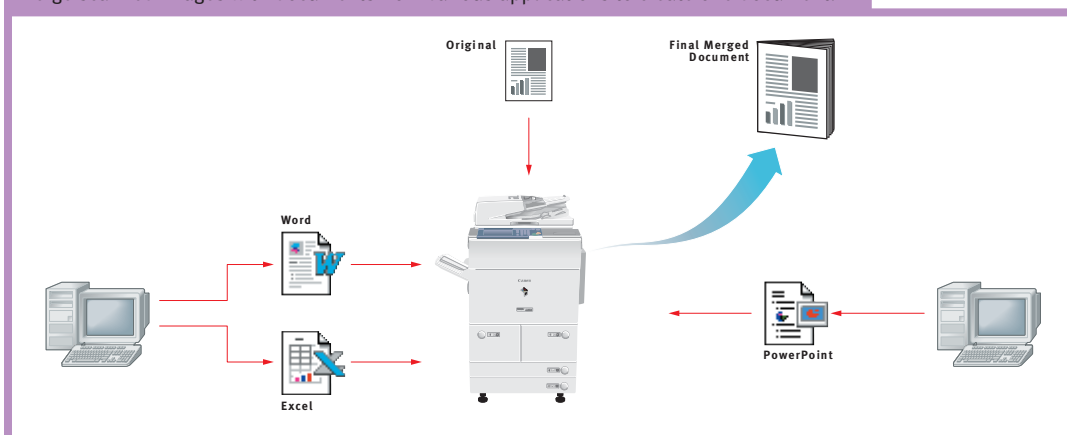
- **Secured Print** – Permits entry of a confidential PIN from within the print driver. Printing will begin only upon entry of the confidential PIN at the device.
- **Store (to a Mail Box)** – Users can send print jobs to a personal Mail Box for integration with other printed or scanned data, thereby creating new compound documents.
- **Edit and Preview (Page Composer)** – Users can combine and print documents that were created in different applications as a single document, preview and manipulate the merged file through a thumbnail view, and change settings on the fly.

Create Professional-looking Output

Together with the imageRUNNER product line, the Canon optional imageWARE Publishing Manager and imageWARE Document Composer provide a complete solution for document creation and optimal output. The result is simplified production of professional-looking color documents requiring various inserts and content types, such as manuals, brochures, catalogs, proposals, reports, books, and presentations.



Merge scanned images with documents from various applications to create one document.





FINALLY, YOU'RE IN CONTROL OF ALL RESOURCES.

The imageRUNNER C5800/C6800 come equipped with a comprehensive set of utilities and features designed to simplify operation, management, and security.

User Authentication

Administrators may enable Department ID Mode to limit access to the imageRUNNER C5800/C6800 to those users assigned valid IDs and passwords. The administrator can set volume ceilings and restrict or enable access to color and black-and-white copy, scan, and print functions for up to 1,000 departments or users. An optional Control Card/Card Reader system manages usage through intelligent cards that must be inserted in the systems before granting access to functions.

Simplified Device Management

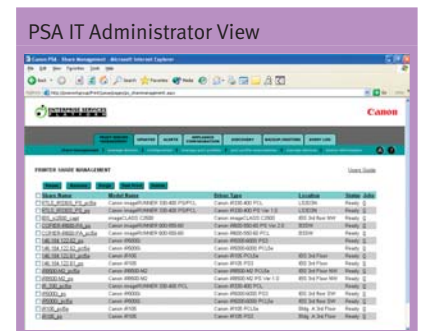
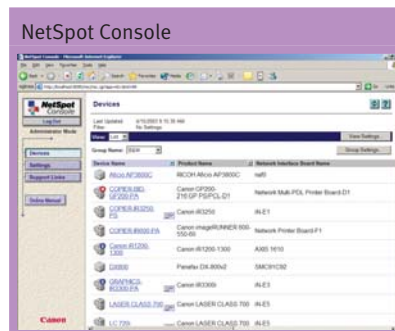
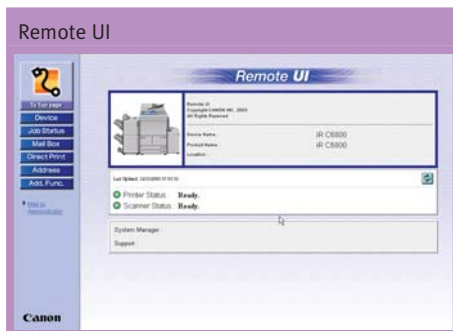
To truly support your requirements, networked devices must be easy to install, seamless to integrate with existing networks, and remotely manageable. Canon's comprehensive solution to this is embodied within Canon's Remote UI™ utility and NetSpot® Suite. Remote UI provides real-time system access and information using a standard Web browser. NetSpot Suite is a group of utilities designed to reduce those administrative burdens associated with vast numbers of print devices on corporate enterprise networks.

Canon Print Server Appliance

The optional Canon Print Server Appliance (PSA) is designed to help administrators manage enterprise network printing. When the PSA is first connected to a network, it will automatically discover all print devices, create print shares for those devices, and publish them on an intranet page generated by the appliance. From this intranet page, users can download the driver—with a single click—and start printing, resulting in increased efficiency and ease-of-use.

imageRUNNER Security Kit

Canon has taken comprehensive measures to ensure that your confidential data is kept secure. With the imageRUNNER Security Kit—an optional software package that initiates the overwriting of hard disks and completely erases previously stored data—your information is kept safe and secure so you can feel at ease.



DESIGN A SOLUTION TO SUIT YOUR NEEDS.

The imageRUNNER C5800/C6800 provide all the tools you need to automate most of your paper-handling chores so you're free to do other tasks.

Exceptional Versatility and Performance

The Canon imageRUNNER C5800/C6800 will make yesterday's tedious tasks a thing of the past. With the standard Duplexing Automatic Document Feeder, the imageRUNNER C5800/C6800 can easily handle multipage, single, or double-sided, and even different-size originals quickly and easily. Their generous paper supply of 4,200 sheets can be boosted to a bountiful capacity of 7,700 sheets for virtually uninterrupted productivity.

True media flexibility is provided with the Canon imageRUNNER C5800/C6800 via support for large paper sizes of up to 13" x 19" and heavy weights of up to 140 lb. Index. Additionally, the systems can accommodate tab paper, transparencies, and irregular-size media—making the imageRUNNER C5800/C6800 bona fide in-house solutions!

The imageRUNNER C5800/C6800 offer several document output and finishing choices that are designed to handle the applications most common to high-volume departments. From simple collating to advanced multiposition stapling, hole-punching, and saddle-stitched booklet-making, the imageRUNNER C5800/C6800 can be configured to meet your entire document finishing needs.

Best of all, every finishing mode is accessible to every user for every job. Just one more way Canon technology helps you work smarter.

Image of a Leader

As the industry's leading producer of network-connected multifunction devices, Canon continues to set new standards for quality, performance, and reliability. That's why you can trust Canon to provide you with solutions to make your department more productive and your business more competitive.

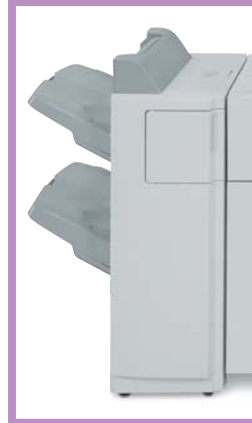
Duplexing Automatic Document Feeder



Paper Sources

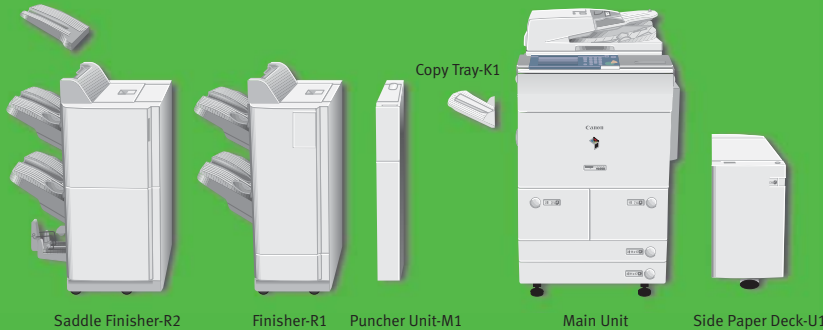


Finisher-R1



Saddle Finisher-R2 (shown with Additional Finisher Tray-A1)





Saddle Finisher-R2

Finisher-R1

Puncher Unit-M1

Main Unit

Side Paper Deck-U1

imageRUNNER®
C5800 / C6800

imageRUNNER C5800/C6800 Specifications

| | |
|---------------------------------|--|
| Type: | Color Digital, Multifunction Imaging System |
| Imaging System: | Laser Dry Electrostatic Transfer |
| Developing System (B/W, Color): | Dry Monocomponent/Dual Component Toner Projection |
| Image Server Memory: | Standard 768MB RAM + 40GB HDD (Max. Capacity: Approximately 3,700 Originals) |
| First-copy Time: | 5.3 Seconds (B/W) 12.2 Seconds (Color) |
| Warm-up Time: | 9 Minutes or Less |
| Copy Speed (B/W, Color): | 58/68, 16 ppm (Letter) |
| Acceptable Originals: | Sheets, Books, 3-dimensional Items (Up to 4.4 lb.) |
| Max. Original Size: | 11" x 17" |
| Max. Copy Size: | 13" x 19" |
| Min. Copy Size: | 4-1/8" x 5-7/8" |
| Max. Mail Boxes Supported: | 100 |
| Max. Copy Reservation: | 5 Jobs |
| Copy/Scan Resolution: | 600 x 600 dpi |
| Engine Resolution: | 600 x 600 dpi |
| Print Resolution: | 2400 dpi x 600 dpi Interpolated |
| Automatic Exposure: | AE or Manual (Text, Photo, or Text and Photo) |
| Halftones: | 256 Gradations (Continuous-tone) |
| Duplexing: | Standard Automatic Trayless Duplexing |
| Magnification: | 25% to 400% (in 1% Increments) from Glass |
| Paper Sources | |
| Standard: | Dual Front-loading Trays (1,500 Sheets Each) Dual Front-loading Cassettes (550 Sheets Each) 100-sheet Stack Bypass 3,500-sheet Paper Deck (Total: 7,700 Sheets) |
| Optional: | |
| Multiple Copies: | 1 to 9,999 |
| Paper Weights: | 17 lb. Bond to 110 lb. Index 17 lb. Bond to 140 lb. Index (Manual Bypass Tray) |
| Dimensions (H x W x D): | 46-7/8" x 26-3/4" x 33-1/2" (1191mm x 679mm x 852mm) |
| Weight: | 498 lb. (226kg) |
| Power Requirements: | 120V, 60Hz, 16A |
| Power Consumption: | 1.75kW |
| Plug: | NEMA 5-20R |
| Drum: | Amorphous Silicon – Estimated Yield: 3,000,000 Impressions |
| Maximum Duty Cycle: | 230,000/280,000 Impressions per Month |
| Toner | |
| Black: | Estimated Yield: 40,000 Images (at 6% Coverage) |
| Colors: | Estimated Yield: 9,500 Images (at 5% Coverage) |

Accessories

Color Universal Send™ Kit-C1P*

| | |
|------------------------|---|
| Sending Methods: | E-mail, I-fax, Super G3 Fax (Optional), File Server, User Inbox (IPX, FTP, SMB) |
| Address Book Capacity: | Max. 1,800 plus LDAP |
| File Format: | TIFF/PDF, PDF/PDF, PDF (Compact) TIFF/JPEG |
| Sending Sizes: | Statement to 11" x 17" |

Automatic Document Feeder (Standard)

| | |
|-----------------------|---|
| Acceptable Originals: | Statement to 11" x 17" |
| Capacity: | 100 Sheets (Letter/20 lb.) |
| Max. Paper Weights: | 10 lb. to 32 lb. Bond (Simplex) 13 lb. to 32 lb. Bond (Duplex) |

Finisher-R1 and Saddle Finisher-R2 (Optional)

| | |
|---------------------------------------|--|
| Number of Trays: | 2 Trays |
| Tray Capacity | |
| Non-collate, Collate, and Group Mode: | 1,000 Sheets (Letter, Statement-R, Executive) 500 Sheets (Legal, Letter-R, 11" x 17", 12" x 18", 13" x 19") |
| Staple Mode: | 1,000 Sheets/30 Sets (Letter, Statement-R, Executive) 500 Sheets/30 Sets (Legal, Letter-R, 11" x 17") |
| Max. Stapling Capacity | |
| Corner, Double: | 50 Sheets (Letter), 30 Sheets (Letter-R, Legal, 11" x 17"; 17 lb. to 20 lb. Bond) |
| Saddle-stitching | |
| Acceptable Paper Sizes: | Letter-R, Legal, 11" x 17" |
| Capacity/Tray: | 1 to 5 Sheets/25 Sets 6 to 10 Sheets/15 Sets 11 to 15 Sheets/10 Sets |
| Max. Stapling Capacity/Set: | 15 Sheets |
| Additional Finisher Tray-A1: | 100 Sheets** |
| Folding: | V-fold |

Puncher Unit-M1*** (Optional for Saddle Finisher-R2 or Finisher-R1)

| | |
|--------------------|---|
| Max. Paper Weight: | Up to 140 lb. Index |
| Paper Sizes: | Letter, Legal, 11" x 17" |
| Punch Method: | Sequential Processing System (One Sheet at a Time) |
| Punch Types: | 2-hole/3-hole (Auto Change) 3-hole (Letter/11" x 17") 2-hole (Legal/Letter-R) |
| Punch Dust Stock: | Approximately 3,000 Sheets |
| Punch Dust Access: | Front |

Side Paper Deck-U1 (Optional)

| | |
|--------------------|------------------------------|
| Number of Drawers: | 1 |
| Paper Capacity: | 3,500 Sheets (20 lb. Bond) |
| Paper Size: | Letter |
| Paper Weight: | 17 lb. Bond to 110 lb. Index |

Canon Color Network Multi-PDL Printer Kit-C1 (Optional)

| | |
|--------------|--|
| Processor: | Canon Custom Processor—Shared |
| RAM: | 768MB (Std./Max.)—Shared |
| Hard Disk: | 40GB—Shared |
| PDL Support: | PCL 5c, PostScript® 3™ Emulation, UFR |

Interface Connections

Standard: RJ-45 (10/100Base-T)
Optional: Token Ring, USB Full-speed (1.1 Equivalent)

Network OS:

Windows® 98/Me/2000/XP
Windows NT® 4.0
Solaris™ 1.x, 2.5, or later
Apple® System 7.5, or higher
Novell® NetWare® v.3.2, 4.1, 4.11, 4.2, 5, 5.1, 6

imagePASS-D1 (Optional)

| | |
|-----------------------|--|
| Type: | Intel® Pentium® III External Piggy-back Controller |
| Processor: | 850MHz Processor |
| RAM: | 128MB (Std.), 256MB (Max.) |
| Hard Disk: | 20GB |
| PDL Support: | Adobe® PostScript 3, PCL 5c |
| Interface Connections | |
| Standard: | RJ-45 (10/100Base-T) Parallel Port (Type B Connector) |
| Network OS: | Novell NetWare v.4.1, 4.2, 5, 5.1, 6.0 (IPX/SPX) Windows 98/Me/2000/XP Windows NT (TCP/IP), Solaris 2.5.1 or later, Apple System 7.5 or higher (DDP) |

Other Optional Accessories and Utilities

- Accessibility Handle-A1
- Braille Label Kit-A1
- Card Reader-C1
- Card Reader Attachment-C1
- Card Sets
- Control Card IV
- Control Card Printer-A1
- Copy Tray-K1
- eCopy Suite
- imageRUNNER Security Kit-A1P
- imageWARE Suite
- Key Switch Unit-A2
- NetSpot Suite
- Resolution Switching Board-A2
- Super G3 Fax Board-P1*
- Token Ring Network I/F Adaptor IN-TR2
- USB Interface Board-A3

* Requires Resolution Switching Board-A2.

** Use of Additional Finisher Tray-A1 to output Letter/Statement-R/Executive will alter top tray capacity.

*** Puncher Unit-M1 can only be installed with either the Finisher-R1 or Saddle Finisher-R2.

© 2004 Canon U.S.A., Inc. All rights reserved.

As an ENERGY STAR® Partner, Canon U.S.A., Inc. has determined that these products meet the ENERGY STAR® guidelines for energy efficiency. ENERGY STAR and the ENERGY STAR certification mark are registered U.S. marks. Windows and Windows NT are registered trademarks of Microsoft Corporation in the United States and/or other countries. Adobe and PostScript are registered trademarks of Adobe Systems Incorporated in the United States and/or other countries. Apple is a registered trademark of Apple Computer, Inc. Intel and Pentium are registered trademarks of Intel Corporation. eCopy ShareScan is a trademark of eCopy, Inc. Novell and NetWare are registered trademarks of Novell, Inc. in the United States and other countries. Solaris is a trademark of Sun Microsystems, Inc. in the United States and other countries. EFI and Command WorkStation are registered trademarks of Electronics for Imaging, Inc. in the U.S. Patent and Trademark Office and certain other foreign jurisdictions. Canon, IMAGERUNNER, NetSpot, and Canon Know How are registered trademarks, and Color Universal Send and the GENUINE logo are trademarks of Canon Inc. in the United States and may also be registered trademarks or trademarks in other countries. IMAGEWARE and Remote UI are trademarks of Canon U.S.A., Inc. IMAGEANYWARE is a registered service mark of Canon U.S.A., Inc. in the United States. All other terms and product names may be trademarks or registered trademarks of their respective owners and are hereby acknowledged.

Specifications subject to change without notice.

Federal Law prohibits copying of certain documents. Violators may be subject to penalties. We suggest that you check with your own legal counsel. Canon U.S.A., Inc. and Canon Canada, Inc. intend to cooperate with Law Enforcement Agencies in connection with claims of unauthorized copying.

0046W420

1004-IRC5800/C6800-100M



PRINTED ON RECYCLED
PAPER IN THE U.S.A.



Money Isn't All You're Saving

Canon KNOW HOW®

1-800-OK-CANON
www.usa.canon.com

Canon U.S.A., Inc.
One Canon Plaza
Lake Success, NY 11042