



THE MFX-SERIES FROM MURATEC

Document solutions  
**GEARED**  
 to fit your needs.



BUSINESS-CLASS DOCUMENT SOLUTIONS

**muratec**

## MFX-series benefits



- Exclusive toner formulation uses biomass plant-based materials to reduce environmental impact.
- Paper fuses at lower temperatures to dramatically reduce power consumption, without compromising on quality.
- Optimize Power Consumption mode automatically sets correct on/off/standby status for workdays, weekends and holidays.
- Eco-indicator on control panel enables you to monitor paper, toner and energy usage by user.
- Print/copy preview modes enable you to print a proof copy prior to printing the full job.
- Extensive use of recycled materials have been incorporated into the products.

**Environmentally responsible**

- Optional duplexing automatic document feeder (DADF) captures color and monochrome documents at up to 160 images-per-minute.
- Optional reversing automatic document feeder (RADF) captures color and monochrome documents at up to 80 images-per-minute.
- Quickly scan to email, FTP, SMB and TWAIN.
- Optional scan to PowerPoint™, PDF/A and User Box for added functionality and convenience.
- Preview scanned documents on the control panel before completing the job.
- Blank page removal reduces the scanning file size by automatically eliminating blank pages during scanning.



**Dynamic document capture**



**Touch and swipe usability**

The new MFX-series from Muratec is a family of products designed with business productivity in mind. Built on an award-winning multifunction platform, these devices deliver superior document output, dynamic document scanning and delivery, distribution-ready output, touch and swipe usability, government grade security solutions and more.

- 9" color touchscreen mirrors the intuitive "touch and swipe" feel of a mobile device.
- Users can reposition and/or delete icons on the screen to create a truly custom experience.
- Control panel tilts (23° to 55°) to increase device accessibility.
- Optional voice guidance system provides audible assistance with machine functions.
- Proximity sensor on the control panel will "wake-up" the machine from sleep mode if it detects motion.



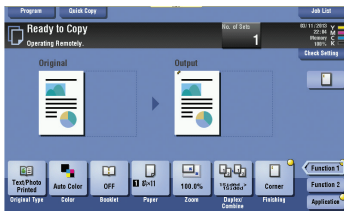
- Full color printing at 22 (MFX-C2280N), 28 (MFX-C2880N) and 36 (MFX-C3680N) pages-per-minute.
- Crisp monochrome printing at 36 (MFX-3680N) and 45 (MFX-4580N) pages-per-minute.
- Print 11"x17" full bleed originals on 12"x18" paper to preserve margins and crop marks.
- Standard PCL6 and PostScript 3.
- Optional stapling, offset stacking, hole punching and job separator trays.
- Optional tri-folding, a first in this class, to create professional booklets.
- Optional tab printing creates section dividers for binders.
- Carbon printing enables the same page to print from multiple trays using a different colored paper from each tray.



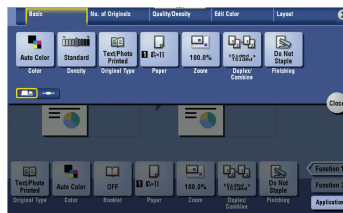
**Powerful printing**

## Touch and swipe usability

The MFX-series was designed to revolutionize the way users interact with their office equipment. It starts with the 9" color touchscreen which mimics the "touch and swipe" interface found on today's mobile devices. Features such as pop-up menus, scrolling function keys and fully customizable user screens deliver the most intuitive, user-friendly experience on the market.



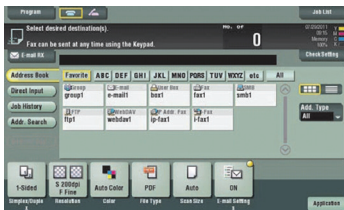
Smart menus provide instant access to frequently used features.



Pop-up screens provide access to advanced features without leaving the primary menu screen.



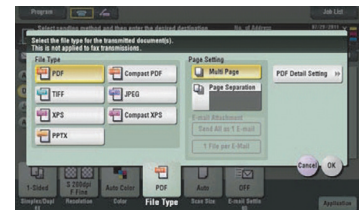
Touch, scroll and swipe your way through job programming and execution, just as you would on your mobile device.



Full access to the email addresses, fax contacts and scanning locations you frequently access.



Adjustable control panel provides device access to all office workers.



Scan documents in TIFF, JPEG, PDF, PDF/A, Compact PDF, XPS and PowerPoint™.

## Document and device security

Demand for protecting both devices and documents is rising. These devices are up to the challenge with features to help control machine access, protect network integrity and encrypt documents before sending.

Document and device security features include:

- Secure print which requires device authentication before releasing a print job from memory.
- Customized user authentication for printing, scanning, faxing and user boxes.
- Encrypted PDF workflow protects information as it passes from the PC to the network.
- IP filtering restricts access to the device based on an IP address authentication list.
- SSL/TLS encryption protects data during an exchange with an LDAP server.
- S/MIME encryption to safeguard email exchanges.
- Audit Log/Image Log tracks usage and controls access.
- Biometric authentication unit and HID authentication tool kit can provide additional layers of authentication without compromising user efficiency.



Optional proximity card reader



Optional mount authentication devices



Biometric authentication unit



## Deliver distribution-ready output

The MFX-series is the ideal solution for producing professional-looking reports, presentations, case files, newsletters, bulletins, flyers, marketing and training materials. Produce documents securely in-house to better control costs, resources and confidentiality.

### Paper Tray

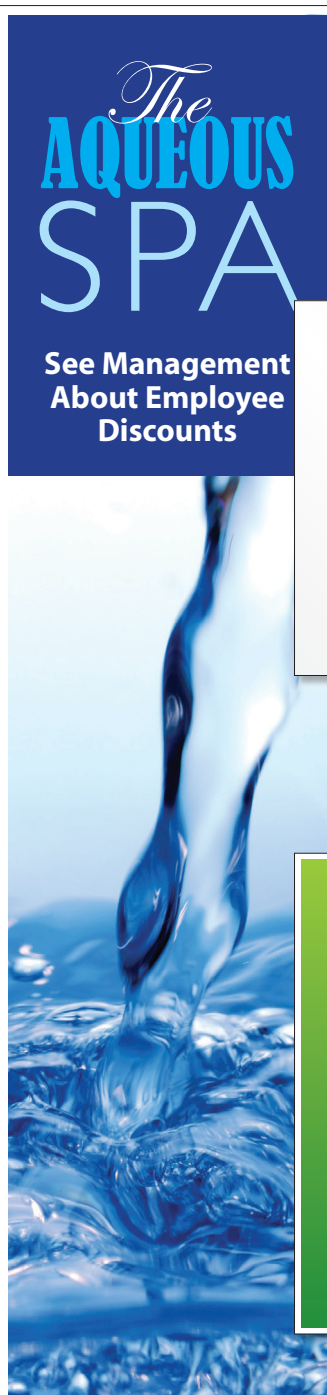
Multipurpose bypass tray  
Paper cassette 1  
Paper cassette 2  
Paper cassette 3 (Optional)  
Paper cassette 4 (Optional)  
Large capacity cassette (Optional)

### Min – Max Size

4" x 6" – 12" x 18"  
5.5" x 8.5" – 11" x 17"  
5.5" x 8.5" – 11" x 17"  
5.5" x 8.5" – 11" x 17"  
5.5" x 8.5" – 11" x 17"  
8.5" x 11"

### Min – Max Weight

16 lb. bond – 100 lb. cover  
14 lb. bond – 140 lb. index  
14 lb. bond – 140 lb. index  
14 lb. bond – 140 lb. index  
14 lb. bond – 140 lb. index  
14 lb. bond – 140 lb. index

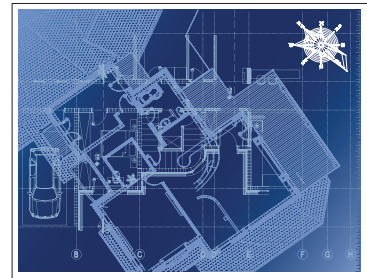


### 11.25" x 47.25" – Banner

Color banners help draw attention to a special event.

Applications include:

- Trade show signage
- Party store profit center (Birthday banners)
- Event announcements



### Recycled paper

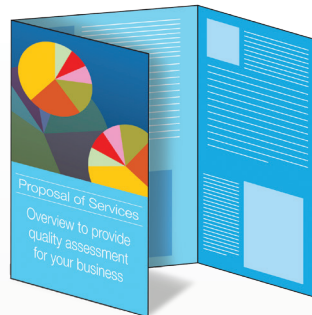
Delivers exceptional output results when using recycled papers featuring 30%, 50% and 100% post consumer recycled content.

### Waterproof paper

Waterproof paper is designed for harsh applications and climates.

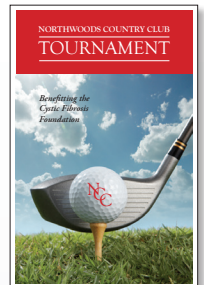
Applications include:

- Real estate collateral
- Outdoor bulletins
- Construction site collateral
- Maps / signs
- Menus



### Tri-fold brochures

Create pre-folded pamphlets and brochures (up to three sheets).



### Booklets

If the optional floor finisher and saddle stitcher have been installed, users can create distribution-ready booklets. This is the perfect application for manuals, company brochures, financial reports, in-house publications, event guides and more.

### 8.5" x 14" – Legal



### Specialty paper

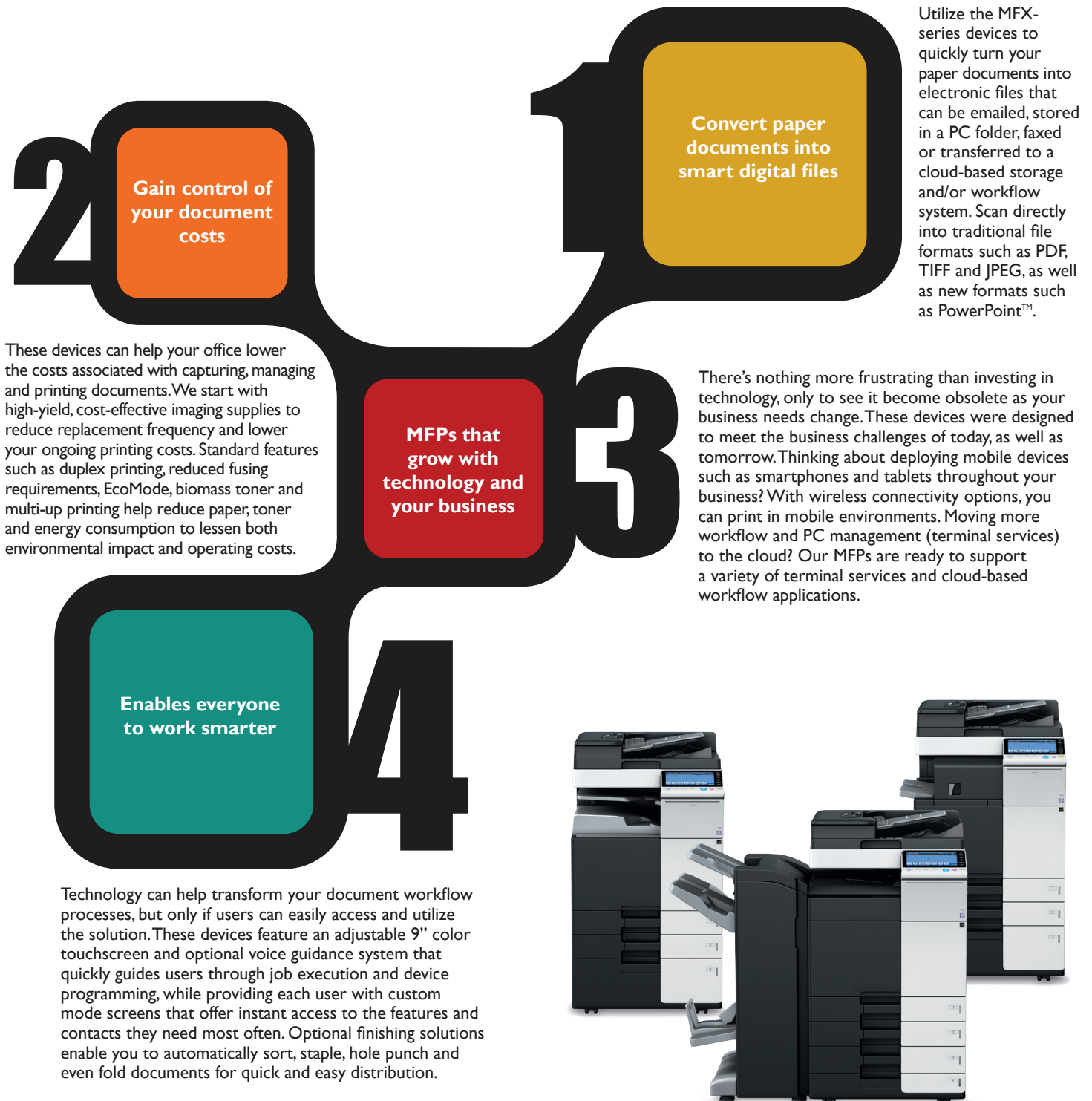
Specialty paper can enhance the perception and uniqueness of a document.

Applications include:

- Cover letters / resumes
- Menus / wine lists
- Special recognition / awards

## How can the new MFX-series help your office work smarter?

Your business is transforming. Your role, expanding and evolving. Doing more with less isn't just a passing trend, it's the new normal. Despite these challenges, companies must maintain exceptional customer service levels, meet project deadlines and process information into systems that conform to new regulations and guidelines. While we can't address all of your business challenges, a multifunction printer (MFP) upgrade from Muratec can assist your office in capturing, managing and distributing information more efficiently, enabling you to thrive in the new normal.



# MFX-series specifications



**MFX-C3680N**



**MFX-C2880N**



**MFX-C2280N**



**MFX-4580N**



**MFX-3680N**

## GENERAL SPECIFICATIONS

Type / Toner System / Print Method	Full-Color Printer / Copier / Scanner with Stationary Platen / HD Toner with Biomass / Tandem Process				
Print / Copy Speed (Letter, Portrait)*	Full Color & B&W: 36 ppm	Full Color & B&W: 28 ppm	Full Color & B&W: 22 ppm	B&W: 45 ppm	B&W: 36 ppm
Duplexing Automatic Document Feeder (C3680DADF)	Full Color / B&W Duplex Speed: 160 opm, Full Color / B&W Simplex Speed: 80 opm, Paper Capacity: 100 Sheets, Paper Size: 5.5" x 8.5" to 11" x 17"				
Reversing Automatic Document Feeder (C3680RADF)	Full Color / B&W Duplex Speed: 37 opm, Full Color / B&W Simplex Speed: 80 opm, Paper Capacity: 100 Sheets, Paper Size: 5.5" x 8.5" to 11" x 17"				
Power Requirements / Consumption	120V 12A (60 Hz) / 1500W or less				
Dimensions (H x W x D) / Weight	31" x 24.2" x 27" / 185.18 lbs.				

## COPY SPECIFICATIONS

Warm-up Time / First Copy Time*	20 seconds / Color: 6.9 seconds, B&W: 5.3 seconds	18 seconds / Color: 7.7 seconds, B&W: 5.9 seconds	18 seconds / Color: 8.3 seconds, B&W: 6.9 seconds	25 seconds / 4.6 seconds	20 seconds / 5.3 seconds
Copy Resolution / Quantity	600 x 600 dpi / 1-9,999				
Magnification	Zoom range: 25% - 400%, 0.1% increments, Preset reduction: 78.5%, 73.3%, 64.7%, 50.0%, Preset enlargement: 121.4%, 129.4%, 154.5%, 200%				
Copy Exposure Modes	Text (legible text), Text / Photo (clear text and halftones), Photo (optimized for gradations), Map (fine edges and legible text), Dot Matrix (dot matrix or pencil originals), Copied Paper				

## PRINT SPECIFICATIONS

Processor / Memory / Hard Disk Drive*	1.0 GHz (MPC8536) / 2GB/250GB (Shared w/copier)	800 MHz (MPC8536) / 2GB/250GB (Shared w/copier)			
Print Resolution / Grayscale	Gradations 600 x 600 dpi (1800 dpi equivalent x 600 dpi) or 1200 x 1200 dpi / 256 shades per pixel				
Page Description Language / Fonts	PCL5e/c, PCL6 (XL v.3.0) Emulation, PS3 (v.3016) Emulation, XPS v. 1.0 (XML Paper Specification) / PCL: 80 Roman fonts, PostScript 3 Emulation: 137 Roman fonts				
Operating System Compatibility	Windows XP Home (SPI), Windows XP Professional (x32, x64), Windows Vista (x32, x64), Windows 7 (x32, x64), Windows Server 2003 Standard / Enterprise (x32, x64), Windows Server 2003 Standard / Enterprise R2 (x32, x64), Windows Server 2008 Standard / Enterprise (x32, x64), Windows Server 2008 Standard / Enterprise R2; Mac (PS-PPD): OS 9.2 or later, OS X 10.2 or later, OS X 10.5 (Intel) or later / Linux: Red Hat				
Interface	10 Base-T / 100 Base-TX / 1000 Base-T, USB 1.1, USB 2.0, USB Host				
Network Protocols	TCP / IP (IPv4/IPv6), BOOTP, ARP, ICMP, DHCP, DHCP v6, AutoIP, SLP, SNMP, FTP, LPR / LPD, RAW Socket, SMB, IPP, HTTP, POP, SMTP, LDAP, NTP, SSL, IPX, AppleTalk, Bonjour, NetBEUI, WebDAV, DPWS, S / MIME, IPsec, DNS, DynamicDNS, LLNMR, LLTD, SSDP, SOAP				

## COPY / PRINT FUNCTIONS

Features	Account Track (1,000 accounts), Administration Mode, Auto Duplex, Auto Tray Switching, Bi-Directional Communication, Black Over Print, Card Shot, Color Modes & Functions (Auto Color / Full Color, Black & White Mode, Single Color Mode, 2-Color Mode, Color Adjustments, Copy Guard), Copy Modes (Simplex / Duplex, 2-in-1, 4-in-1, 8-in-1, Book, Booklet, Booklet + Bind), Cover Mode, Creative Functions (Mirror Image, XY Zoom, Image Center, Base Color, Neg. / Pos. Reverse, Image Repeat), Encrypted Network Password Printing, Enlarge Display, Erase (Border, Frame, Edge) Mode, Finishing (Group, Sort, Staple, Punch, Half-Fold, Tri-Fold, Center Staple and Fold), Form Overlay, Glossy Mode, HDD Encryption, HDD Job Overwrite, HDD Sanitizing, Image Adjustments (Color Matching, Pure Black Auto ON / OFF, Color Balance, Screen Settings, Image Smoothing ON/OFF)
----------	---

## SCAN SPECIFICATIONS

Scan Resolutions	200 dpi, 300 dpi, 400 dpi, 600 dpi
Scan File Formats / Color Modes	TIFF, PDF, Compact PDF, JPEG, XPS, Compact XPS, PPTX / Auto Color; Full Color; Black & White, 2-Color; Single Color
Scan Functions	Scan-to-Email, Scan-to-FTP, Scan-to-HDD (Scan-to-User Box), Scan-to-Me / Scan-to-Home, Scan-to-SMB (Scan-to-Desktop), Scan-to-USB, Scan-to-WebDAV, Distributed Scan Management, Network TWAIN, WS-Scan, Color Internet Fax

## FAX SPECIFICATIONS (OPTIONAL - C3680FAX)

Compatibility / Compression	Super G3 compatibility, 33.6 Kbps modem speed / MH, MR, MMR, JBIG data compression
Fax Transmission Speed / Fax Memory	Less than 3 seconds per page (JBIG, standard resolution) / 2 GB (shared print, copy, scan, fax memory)
Fax Line Mode / Fax Exposure Mode	PSTN, PBX, G3 / Text, Text / Photo, Photo, Dot Matrix
Fax Functions	Autodialing (2,000 addresses), Auto Memory Reception, Auto Reduction Printing, Broadcasting (maximum 600 locations), Bulletin Board, Duplex Transmission / Reception, F-Code Support, Group Dialing (up to 500 addresses per group / up to 100 groups), Mailbox Transmission/Reception, Memory / Quick Dial, Overseas Transmission, Password Transmission / Reception, PC-Fax, IP Address Fax, Polling Transmission / Reception

## PAPER HANDLING

Original Size	Up to 11" x 17" (scanning / copying), Up to 11" x 17" full bleed on 12" x 18" paper (printing)
Standard Paper Capacity	Tray 1: 500-sheet (universal cassette) / 5.5" x 8.5" to 11" x 17" / 14 lb. bond to 140 lb. index, Tray 2: 500-sheet (universal cassette) / 5.5" x 8.5" to 12" x 18" / 14 lb. bond to 140 lb. index, Bypass Tray: 150-sheet bypass / 4" x 6" to 12" x 18", 8" x 13" / Banner Paper / 16 lb. bond to 100 lb. cover up to 300 gsm
Optional 500-Sheet Cassette (C3680CAS1)	500-sheets / 8.5" x 11", 8.5" x 14", 11" x 17" / 14 lb. bond to 140 lb. index / Foolscap: 8.5" x 13.5", 220mm x 330mm, 8.5" x 13", 8.25" x 13", 8.12" x 13.25", 8" x 13"
Optional (2) 500-Sheet Cassettes	500-sheets (x2) / 8.5" x 11", 8.5" x 14", 11" x 17" / 14 lb. bond to 140 lb. index / Foolscap: 8.5" x 13.5", 220mm x 330mm, 8.5" x 13", 8.25" x 13", 8.12" x 13.25", 8" x 13"
Large Capacity Cassette (C3680CASL)	2,500-sheets / 8.5" x 11" / 14 lb. bond to 140 lb. index
Maximum Paper Capacity	3,650-sheets (total with options)

## ADDITIONAL OPTIONS

Authentication / Security Options	C3680HID - Proximity Card Authentication Unit, C3680TABLE - Working Table to support Authentication Devices
Finishing	C3680FN2 - 50-Sheet Staple Finisher; C3680PUN2 - Punch Kit (C3680FN2), C3680SDL - Saddle Stitcher Kit (C3680FN2), C3680FN - 50-Sheet Internal Staple Finisher; C3680PUN - Punch Kit (C3680FN), C3680BIN - Job Separator
Other Options	C3680CAB - Paper Cabinet, C3680BANNER - Banner Paper Guide

\* Specific to each machine.

Muratec and the Muratec logo are trademarks and/or registered trademarks of Murata Machinery, Ltd. or its subsidiaries in the United States and other countries. Other names, such as those of products of other companies, are the trademarks or registered trademarks of their respective companies. All specifications subject to change without notice.

MK3251



Muratec America, Inc. 3301 East Plano Parkway, Suite 100, Plano, Texas 75074

For more information on Muratec products or services, call (469) 429-3300 or visit our web site at [www.muratec.com](http://www.muratec.com)

