

Canon

imageRUNNER[®]
8070



PRODUCTION
SYSTEMS



meap
POWERED BY I

imageRUNNER®
8070

PRODUCTION SYSTEMS

CONDUCT YOUR BUSINESS WITHOUT BOUNDARIES

Free yourself from the limitations of yesterday's technology. Remove the barriers that restrict your ability to produce and distribute information at the time and place of need, and liberate your business with the Canon imageRUNNER® 8070.

Designed to seamlessly integrate with your core business applications, this new-generation imageRUNNER device bridges the hard-copy and digital workflows of your organization with access that is secure,* easy, and instant. The imageRUNNER 8070 can serve as the origin of your business communications, or as the destination. Whichever the case, it will quickly become an indispensable part of your document production and distribution services.

The imageRUNNER 8070 is engineered to support large, multiuser departments with CRD-caliber performance in decentralized environments. A heavy-duty design and advanced throughput and finishing capabilities make the imageRUNNER 8070 a perfect fit for your volume-intensive requirements.



*May require optional equipment.

PRODUCE DOCUMENTS WITH MINIMUM EFFORT AND MAXIMUM EFFECT

Uncompromising speed and image quality

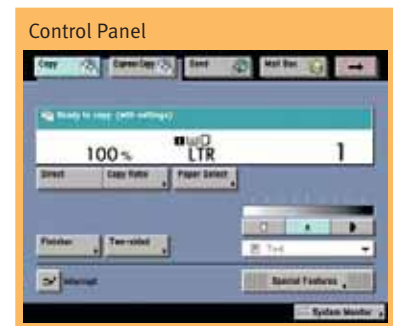
Even at its rated speed of 80 pages per minute (LTR), the imageRUNNER 8070 maintains consistent high image quality at 2400 x 600 dpi resolution, ensuring that your mission-critical jobs are produced on-time, every time.

Ease-of-use

Whether you're an entry-level operator working between semesters or an experienced copy center professional, the imageRUNNER 8070 eliminates the guesswork from creating professionally finished documents with an easy-to-use control panel interface and intuitive print driver software. For all its technological merits, the imageRUNNER 8070 is surprisingly easy to operate and maintain; with minimum effort and maximum uptime.

Professionally finished documents

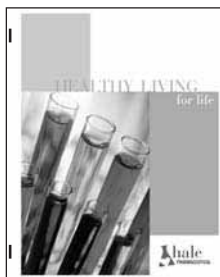
Document production is not complete until the output is *finished*. The imageRUNNER 8070 offers the most robust finishing capabilities in its class to deliver in-house finishing capabilities previously available only through outsourcing. Produce beautifully finished sets of documents, including church bulletins that are stitched, folded, and trimmed; course syllabi or business reports with printed tabs and preprinted color covers and inserts; or sales reports, complete with Z-folded spreadsheets.



Produce professionally finished documents.



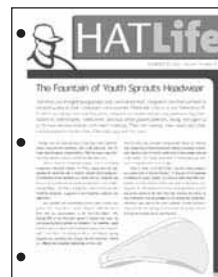
A Variety of Finishings*



100-sheet Stapling



Cover Insertion and Booklet-making



Two- or Three-hole Punching



Z-folding

*May require optional equipment.



EXCEPTIONAL COPY AND PRINT PERFORMANCE FOR YOUR HIGH-VOLUME REQUIREMENTS



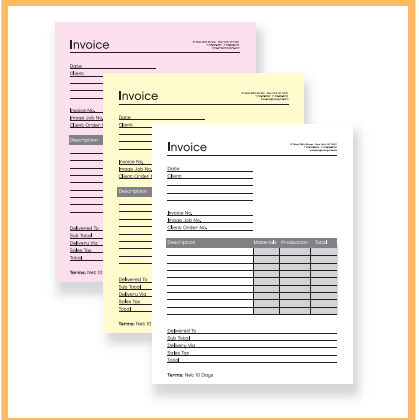
Flexible Media Handling

With the imageRUNNER 8070, documents can be copied onto a wide variety of paper sizes and media types, including tabs, transparencies, card stock, and carbonless media specifically designed for Canon imageRUNNER systems. Whatever your printing needs may be, Canon has the specialty media available to meet them.

Connectivity without Complications

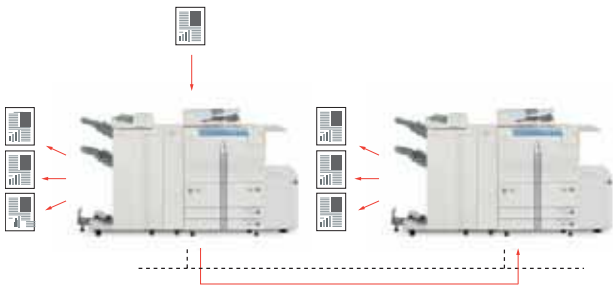
Compatible with most of today's popular operating systems, the imageRUNNER 8070 is at home in virtually any network environment. Standard Ethernet connectivity provides ample data transfer speeds and free Cascade and Remote Copy** functionality for environments with multiple device installations.

Create custom forms in seconds with Canon Carbonless Media.

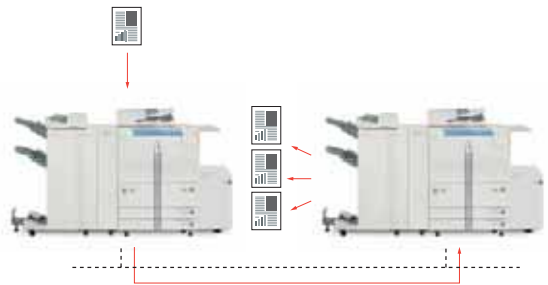


Cascade and Remote Copy**

Cascade Copy



Remote Copy



Double system productivity and enable printing directly to the point-of-need by leveraging the power of other imageRUNNER 8070 devices installed on the network.

**Available in 2005. Check with your local Authorized Canon Dealer for availability.

A PRINT SOLUTION FOR EVERY ENVIRONMENT

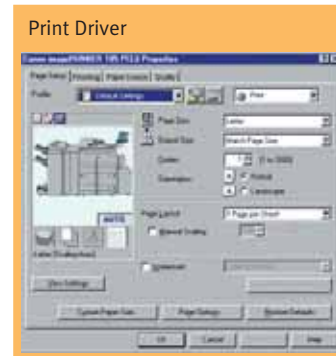
The **Canon Network Multi-PDL Printer Kit** makes use of the imageRUNNER 8070 internal processor to handle text-intensive print jobs where PCL data represents the bulk of jobs sent to the printer. GUI-enabled drivers for PCL, PostScript®, and UFR II are available.

The **Canon imagePASS-M3 Print Controller** is an external RIP designed by EFI to meet the needs of customers printing true Adobe® PostScript files, complex graphics, and variable data output. The imagePASS-M3 adds support for hot folders, and leverages EFI® Command WorkStation®, DocBuilder Pro™, Job Monitor, and Fierly® FreeFrom™ utilities.

EFI MicroPress® iX delivers powerful digital prepress and workflow management capabilities to single imageRUNNER 8070 installations. The MicroPress iX features post-RIP digital prepress capabilities to provide users with total independence from the original application and sophisticated authoring tools to make job and page-level changes.

EFI MicroPress SX/DX/MX offerings build on the iX with the capability of driving multiple Canon imageRUNNER and CLC systems from a single front-end solution. Every MicroPress model features an open and modular architecture for a painless upgrade path to new technology.

I-O® Corp Host Solutions seamlessly integrate a Canon imageRUNNER into an IBM host print environment. With fast and reliable conversions of SCS and IPDS data to PCL, I-O host print solutions can drive an imageRUNNER at rated speeds to handle the large print volumes typical of an AS/400 or mainframe environment—and they do so while utilizing the full finishing support of the imageRUNNER device.



Value-added Printing Functionality

- **Secured Print** for document confidentiality.
- **Integration with imageWARE™ Publishing Manager** for drag-and-drop document building.
- **Direct Print** (PDF, TIFF, JPEG, and PS files) to print documents without opening the authoring application.
- **Bar-code printing**** support for quick and accurate production of bar codes.
- **Web page printing**** directly from the device control panel for users without access to a computer.

**Available in 2005. Check with your local Authorized Canon Dealer for availability.
Note: All features listed on this page are optional.

ALL OUR BASES ARE COVERED

Allow Canon to lift the communication limitations of your business. Scan, convert, distribute, modify, compile, process, and print documents with minimum effort using Canon's suite of document management solutions.

User Mail Boxes offer a centralized document archival and distribution vehicle for individual or departmental use. Scan hard-copy documents or send jobs from a connected PC for storage, job-merging, duplication to other Mail Boxes, batch-printing, or for e-mail blasts to addresses stored on the imageRUNNER device.

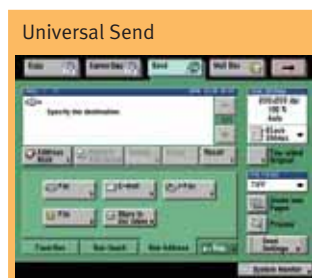
Network ScanGear is Canon's pull-scanning application available free-of-charge for print-enabled imageRUNNER 8070 systems. Capture documents from the ADF or platen glass for transmission over the network back to your desktop for a simple, cost-efficient way to convert, annotate, and archive your documents.

Universal Send™ converts hard-copy documents for distribution to any network destination—individual or group e-mail addresses, Internet faxes, local Mail Boxes, network folders, and document management systems—in one simple operation. Users may select from several industry-standard file formats, take advantage of searchable PDF (OCR) and PDF encryption capabilities, and select recipients from up to five corporate e-mail servers. With URL Send, large files residing in a Mail Box can be

distributed as a URL link, greatly reducing network traffic and unclogging personal e-mail accounts.

eCopy ShareScan OP™ integrates hard-copy operations into the workflow of enterprise software applications such as reporting, administration, document management, ERP, financials, and HR and customer management. eCopy ShareScan OP sets a new standard for simple, secure, and cost-effective distribution of electronic documents—all of which are accessible from the imageRUNNER 8070 control panel interface.

EFI Digital StoreFront™ is a turnkey Web-based print center that simplifies print job submission and proofing over the Internet. Digital StoreFront automates proofing, estimating, and billing and reporting, and streamlines print center operations by seamlessly integrating the flow of data, while optimizing job turnaround by automating the flow of print jobs to Canon imageRUNNER and CLC systems.



Note: All features listed on this page are optional with the exception of the User Mail Boxes.

YOUR BUSINESS IS UNIQUE AND SO IS THE imageRUNNER 8070



Now You're in Complete Control

Don't let networked devices dictate how you conduct business. Canon offers all the tools you need to simplify imageRUNNER 8070 configurations, administration, access, and customization—regardless if you're supporting a single unit or a fleet of networked production systems.

Canon device management utilities are embodied within the Canon NetSpot® Suite and Remote UI™ utilities. Authentication features such as Department ID Mode provide the ability to track or limit device access to users assigned valid IDs and passwords. Simple Device Login (SDL) and Single Sign-on (SSO) functionalities allow users to enter existing personal IDs and passwords to gain system access.

Security Features to Lock Down Sensitive Data

With the threat to data security on the rise, taking action to improve security measures is no longer an option. Protecting your intellectual property and other sensitive business documents is vital to your organization's success, and Canon has gone to great lengths in ensuring that every piece of data, printed or stored, on an imageRUNNER system is secure.

- Protect the integrity of your documents stored in imageRUNNER Mail Boxes with hard-drive encryption capabilities.
- Delete personal Address Book data and stored documents in a single step.
- Convert hard-copy originals to secure password-protected PDF files to prevent unauthorized document access or annotations.
- Track or limit access to the imageRUNNER 8070 by assigning personal IDs and passwords.
- Eliminate any chance of data theft by removing the hard-drive.**

Future Proof your Business Applications with MEAP®

With Canon's Java-based Multifunctional Embedded Application Platform (MEAP) architecture, businesses can acquire programs or integrate their own unique applications and services onto an imageRUNNER device. A Canon MEAP document management system can address issues specific to your industry. Create templates, style sheets, and image banks accessible from the imageRUNNER device, or design a kiosk-like interface for customer service or order-fulfillment transactions that can be accessed directly from the imageRUNNER control panel interface. The result is total integration of the imageRUNNER 8070 into your business infrastructure.



**Available in 2005. Check with your local Authorized Canon Dealer for availability.



imageRUNNER 8070 Specifications

Type: Digital, Multifunction Imaging System
Imaging System: Laser Dry Electrostatic Transfer
Developing System: Dry Monocomponent Toner Projection
Image Server Memory: Standard 512MB RAM + 20GB HDD
Interface Connections: RJ-45 (10/100Base-T)
First-copy Time: 3.1 Seconds from Platen Glass
 4.3 Seconds from ADF
 6 Minutes or Less
Warm-up Time: Sheets, Books, 3-Dimensional Items
Acceptable Originals: 11" x 17" (Ledger)
Max. Original Size: 11" x 17" (Ledger)
Max. Copy Size: 4-1/8" x 5-7/8"
Min. Copy Size: 100
Max. Mail Boxes Supported: 5 Jobs
Max. Copy Reservation: 600 dpi x 600 dpi
Copy/Scanning Resolution: 1200 dpi x 600 dpi Interpolated
 600 dpi x 600 dpi
Printing Resolution: 2400 dpi x 600 dpi Interpolated
 256 Gradations of Gray
Half-tone: 80 cpm (Letter)*
Copy Speed: 40 cpm (Ledger)
 Standard Automatic Trayless
Duplexing: Magnification Reduction/
Enlargement: 25% to 400% in 1% Increments
Paper Supply: Standard: Dual Front-loading Trays (1,500 Sheets Each)
 Dual Front-loading Cassettes (550 Sheets Each)
 Optional: 50-sheet Stack Bypass
 3,500-sheet Paper Deck-N1 (Total: 7,650 Sheets)
Multiple Copies: 1 to 9,999
Paper Weights: 17 lb. Bond to 110 lb. Index (All Paper Sources)
Supplies: Drum: Amorphous Silicon – Estimated Yield: 5,000,000 Impressions
 Maximum Duty Cycle: 350,000 Impressions per Month
 Toner: Magnetic Negative Toner – Estimated Yield: 36,600 Images

ACCESSORIES

Automatic Document Feeder

Acceptable Originals: Statement to Ledger
Scanning Speed: 55 ppm (Letter)
Capacity: 100 Sheets (All Sizes/20 lb.)
Paper Weights: 10 lb. Bond to 32 lb. Index

Finisher-K1N/K2N (Optional)

Number of Trays: 2 Trays
Tray Capacity: Top Tray: 1,000 Sheets (All Sizes)
 Offset Stacking
 2,000 Sheets (Letter)
 1,000 Sheets (11" x 17", Legal)
 Lower Tray: Offset Stacking
 1 - Any Corner
 2 - Side Margin
Staple Position: 100 Sheets (Letter/Statement)
Max. Stapling Capacity: 50 Sheets (Letter-R/Legal/11" x 17")
Hole-punch (K2N Only): 3 Holes (11" x 17", Letter)
 2 Holes (Legal, Letter-R)

Saddle Finisher-K3N (Optional)

Number of Trays: 3 Trays
Tray Capacity: Top Tray: 1,000 Sheets (All Sizes)
 Offset Stacking
 2,000 Sheets (Letter)
 Lower Tray: 1,000 Sheets (11" x 17", Legal)
 Offset Stacking
 30 Sets
Saddle-stitch Tray: 30 Sets
Staple Position: 1 - Any Corner
 2 - Side Margin
Max. Stapling Capacity: 100 Sheets (Letter/Statement)
Hole-punch: 50 Sheets (Letter-R/Legal/11" x 17")
 3 Holes (11" x 17", Letter)
 2 Holes (Legal, Letter-R)
Saddle-stitch Capabilities: 11" x 17", Letter
Saddle-stitch Paper Sizes: 15 Sheets (60 Pages)
Stapling Capacity: V-folding Standard
Folding:

Paper Deck-M1/T1 (Optional)

Paper Capacity: 3,500 Sheets
Paper Size (M1): Letter
Paper Size (T1): Letter-R, Letter, Legal, 11" x 17"
Paper Weights: 17 lb. Bond to 110 lb. Index

Document Insertion Unit-B1+ (Optional)

Paper Sizes: Letter-R to 11" x 17"
Paper Weights: 17 lb. Bond to 110 lb. Index
Feeder Capacity: Letter, Letter-R: 100 Sheets
 Legal, 11" x 17": 50 Sheets

Paper Folding Unit-C1+ (Optional)

Paper Size: 11" x 17" Only
Paper Weights: 17 lb. Bond to 22 lb. Bond
Fold Type: Z-fold

Booklet Trimmer-A1+ (Optional)

Sheet Capacity: 30 Sheets (60 Pages)
Stack Capacity: 2,000 Pages
Dust Capacity: 2,000 Pages

Network Multi-PDL Printer Kit-F1 (Optional)

PDL Support: PostScript 3 Emulation
 PCL 5e, PCL 6, UFR II
Protocol Stacks: Ethernet
 IPX/SPX*: 802.2, 802.3
 Ethernet II, 802.2 SNAP
 TCP/IP
Network OS: AppleTalk* Phase II
 Novell* NetWare* v3.2, 4.1, 4.11, 4.2, 5, 5.1
 Windows* 95/98/Me/2000/XP
 Windows NT* 4.0, Windows 2003 Server
 Solaris* 1.x, 2.5 or Later
 Apple* System 7.5 or Higher
 NDP5, Port 9100, IPP
Print Service: Additional Functions Supported: Network ScanGear, Remote UI*, NetSpot, Universal Send™

Canon imagePASS-M3 Print Controller (Optional)

Hardware: External Stand-alone Controller
Processor: Intel® Celeron™ 2.5GHz
Memory: 256MB
Storage: 40GB HDD
PDL Support: Adobe PostScript 3
 PCL 5e, PCL 6
Interface Connections: RJ-45 (10/100/1000Base-T)
 IEEE 1284 (Optional Adapter)
Protocol Stacks: Ethernet
 IPX/SPX*: 802.2, 802.3
 Ethernet II, 802.2 SNAP
 TCP/IP
Network OS: AppleTalk: 802.2 SNAP and AppleTalk Phase II
 Novell NetWare v3.2, 4.1, 4.11, 4.2, 5, 5.1
 Windows 98/Me/2000/XP
 Windows NT 4.0
 Solaris 2.5.1 or Later
 Apple System 8.6, 9, 9.1, OS X
 NDP5, Port 9100, IPP
Print Service: Additional Functions Supported: Network ScanGear, Remote UI, NetSpot (except Job Monitor), WebTools™
Additional Functions Standard: Command WorkStation
 Command WorkStation LE (only OS X)
 Fiery Downloader*
 Impose
 Hot Folders
 Data Center PDS Converter (TBD)
 Parallel I/F Adapter IP-A1
Optional:
Universal Send Kit-C1
Sending Method: E-mail, I-fax, Database (Salutation), File Server (IPX, FTP, SMB)
Address Book Capacity: Maximum 1,800
File Format: TIFF, PDF (OCR), MTIFF
Sending Size: Statement to Ledger
Scan Density: 200 dpi, 300 dpi, 400 dpi, 600 dpi

Dimensions Table

Product Name	Dimensions (H x W x D)	Weight	Power
imageRUNNER 8070 Main Unit	40-5/8" x 30-1/8" x 31-3/8" (1171mm x 764mm x 795mm)	601 lb. (273kg)	208V, 60Hz, 12A
Finisher-K1N	39-1/4" x 26-1/4" x 29-1/8" (995mm x 667mm x 738mm)	141 lb. (64kg)	Directly from Main Unit
Finisher-K2N	39-1/4" x 26-1/4" x 29-1/8" (995mm x 667mm x 738mm)	145 lb. (66kg)	Directly from Main Unit
Saddle Finisher-K3N	39-1/4" x 31-5/8" x 29-1/8" (995mm x 803mm x 738mm)	279 lb. (127kg)	Directly from Main Unit
Paper Deck-M1	22-1/2" x 12-3/4" x 23" (570mm x 323mm x 583mm)	90.3 lb. (41kg)	Directly from Main Unit
Paper Deck-T1	22-5/8" x 23-3/8" x 24-1/2" (575mm x 593mm x 621mm)	101 lb. (46kg)	Directly from Main Unit
Document Insertion Unit-B1	5-5/8" x 22-1/8" x 23" (144mm x 561mm x 584mm) (with Auxiliary Tray Opened)	35 lb. (16kg)	Directly from Main Unit
Paper Folding Unit-C1	39-1/4" x 7-1/8" x 26-5/8" (995mm x 179mm x 675mm)	108 lb. (49kg)	Directly from Main Unit
Booklet Trimmer-A1	22-1/8" x 52" x 24-3/4" (562mm x 1321mm x 629mm)	149 lb. (68kg)	120V AC, 60Hz
imagePASS-M3 Print Controller	15-1/2" x 6-3/8" x 15-3/4" (394mm x 162mm x 400mm)	21 lb. (9.6kg)	110-240V, 1A

*80 pages per minute when printing/copying letter-sized documents from paper sources other than the Stack Bypass and lower two Cassettes

▲ The Document Insertion Unit-B1, the Paper Folding Unit-C1, and the Booklet Trimmer-A1 can only be used with the Saddle Finisher-K3N.

■ The imageRUNNER 8070 is not ENERGY STAR® qualified when attached to the optional imagePASS-M3 Print Controller.

© 2005 Canon U.S.A., Inc. All rights reserved.

As an ENERGY STAR® Partner, Canon U.S.A., Inc. has determined that this product meets the ENERGY STAR® guidelines for energy efficiency, except when attached to the optional imagePASS-M3 Print Controller. ENERGY STAR and the ENERGY STAR certification mark are registered U.S. marks. Windows and Windows NT are registered trademarks of Microsoft Corporation in the United States and/or other countries. Adobe and PostScript are registered trademarks of Adobe Systems Incorporated in the United States and/or other countries. eCopy ShareScan is a trademark of eCopy, Inc. EFI, Fiery, MicroPress, and Command WorkStation are registered trademarks of Electronics for Imaging, Inc. in the U.S. Patent and Trademark Office and/or certain other foreign jurisdictions. Fiery Downloader, DocBuilder Pro, Digital StoreFront, WebTools, and FreeForm are trademarks of Electronics for Imaging, Inc. Apple and AppleTalk are registered trademarks of Apple Computer, Inc. Intel and Celeron are registered trademarks of Intel Corporation. Novell and NetWare are registered trademarks of Novell, Inc. in the United States and other countries. IPX/SPX is a trademark of Novell, Inc. Solaris is a trademark of Sun Microsystems, Inc. in the United States and other countries. Canon, IMAGERUNNER, NetSpot, MEAP, and Canon Know How are registered trademarks, and Universal Send and the GENUINE logo are trademarks of Canon Inc. in the United States and may also be registered trademarks or trademarks in other countries. Remote UI and IMAGEWARE are trademarks of Canon U.S.A., Inc. IMAGEANYWARE is a service mark of Canon U.S.A., Inc. in the United States. All other terms and product names may be trademarks or registered trademarks of their respective owners and are hereby acknowledged.

Specifications are subject to change without notice.

0049W782

0205-iR8070-PDF-NW



1-800-OK-CANON
 www.usa.canon.com

Canon U.S.A., Inc.
 One Canon Plaza
 Lake Success, NY 11042